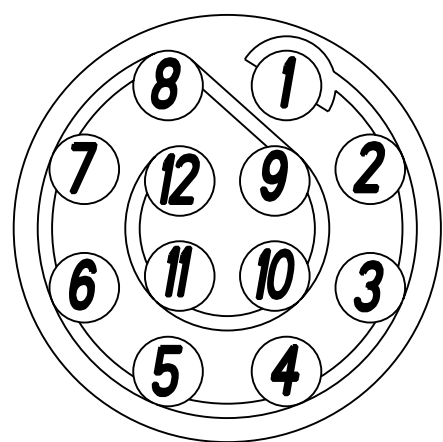
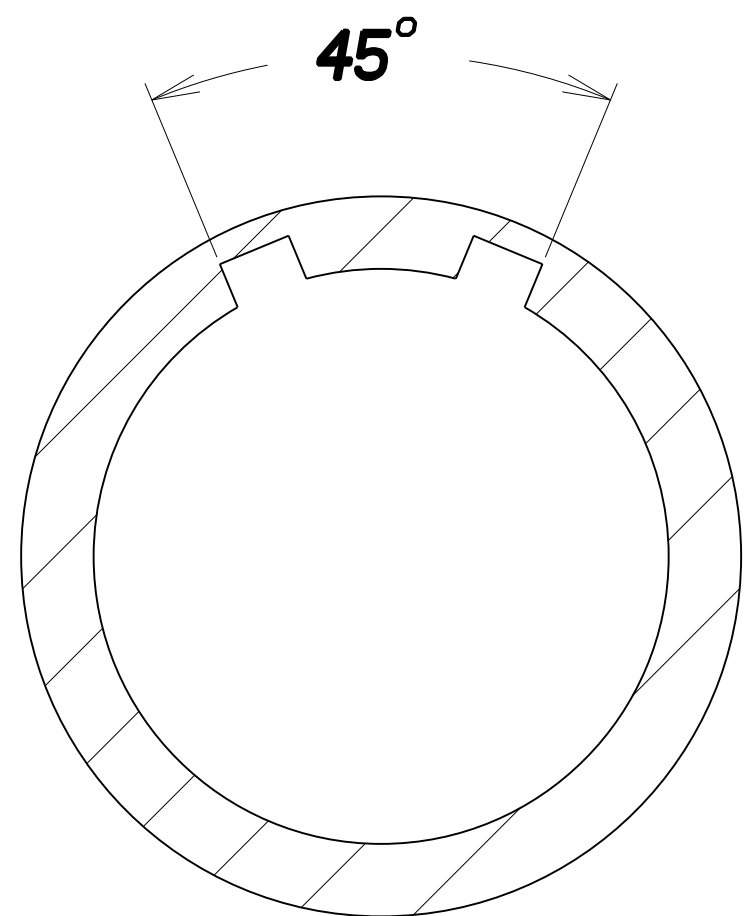
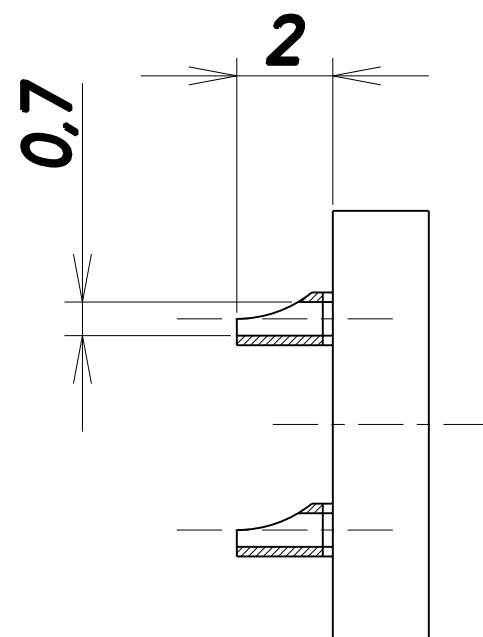


**Insulator**  
**Viewed from wiring side**

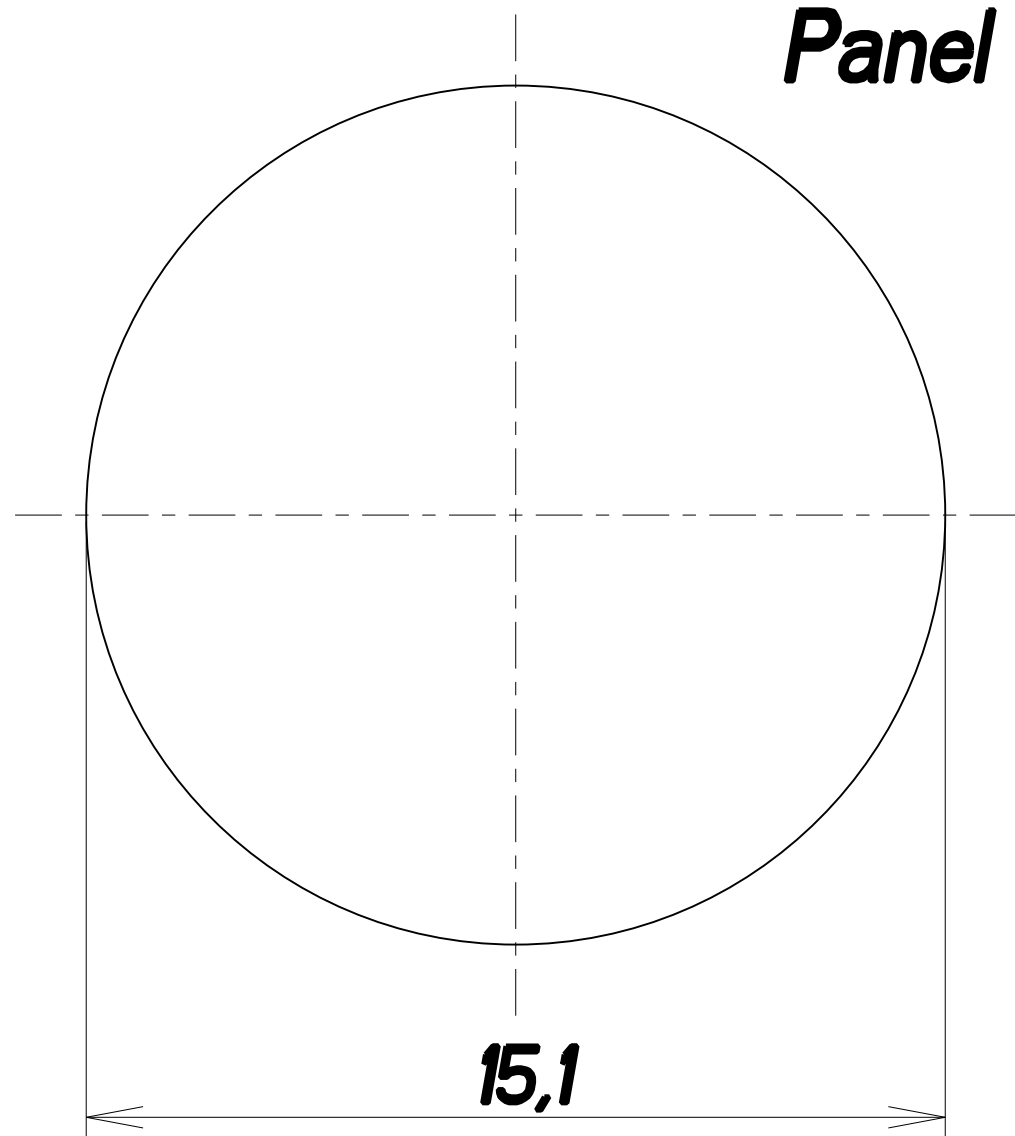


12 sockets x 0.7 mm

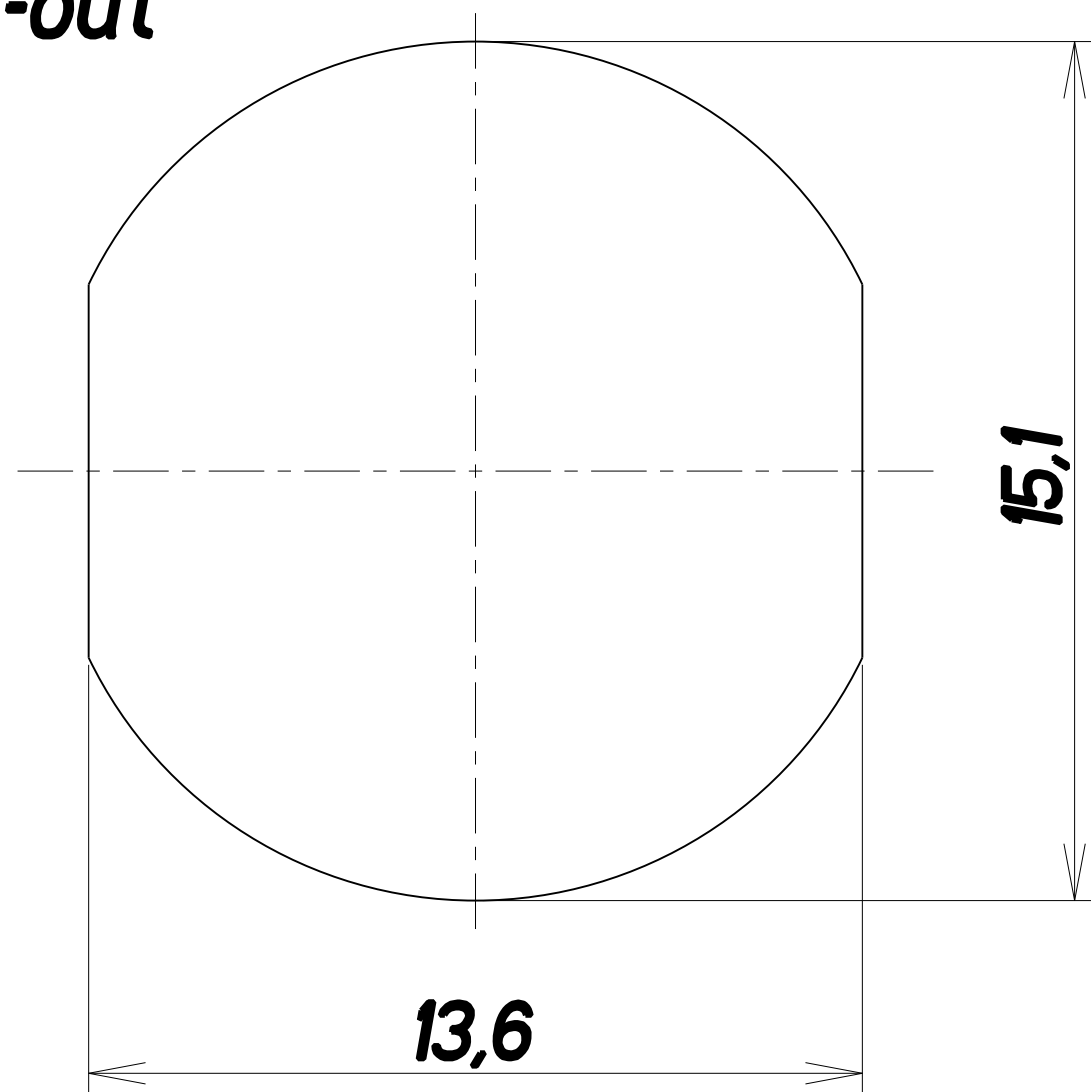


Keying

Panel cut-out

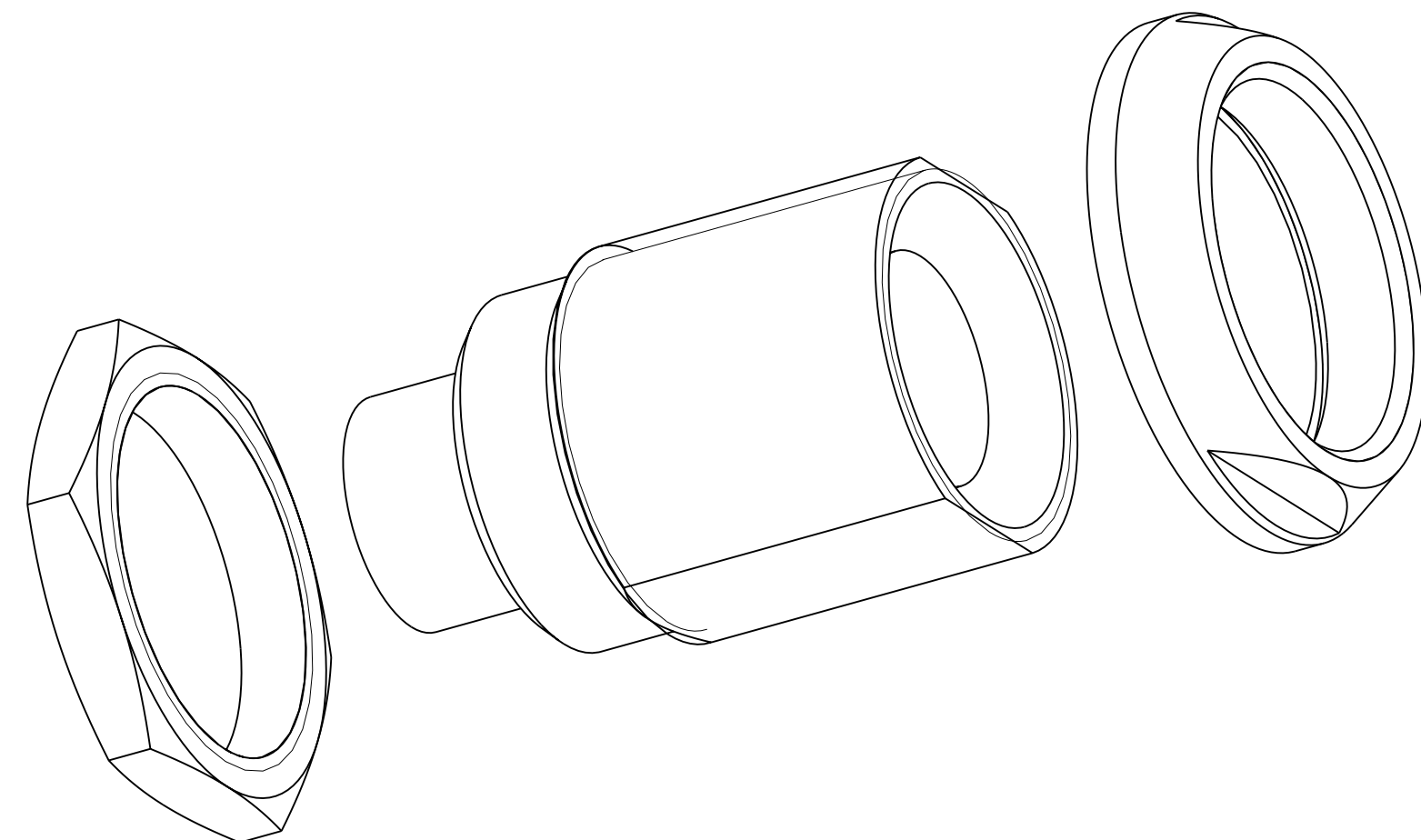


15,1

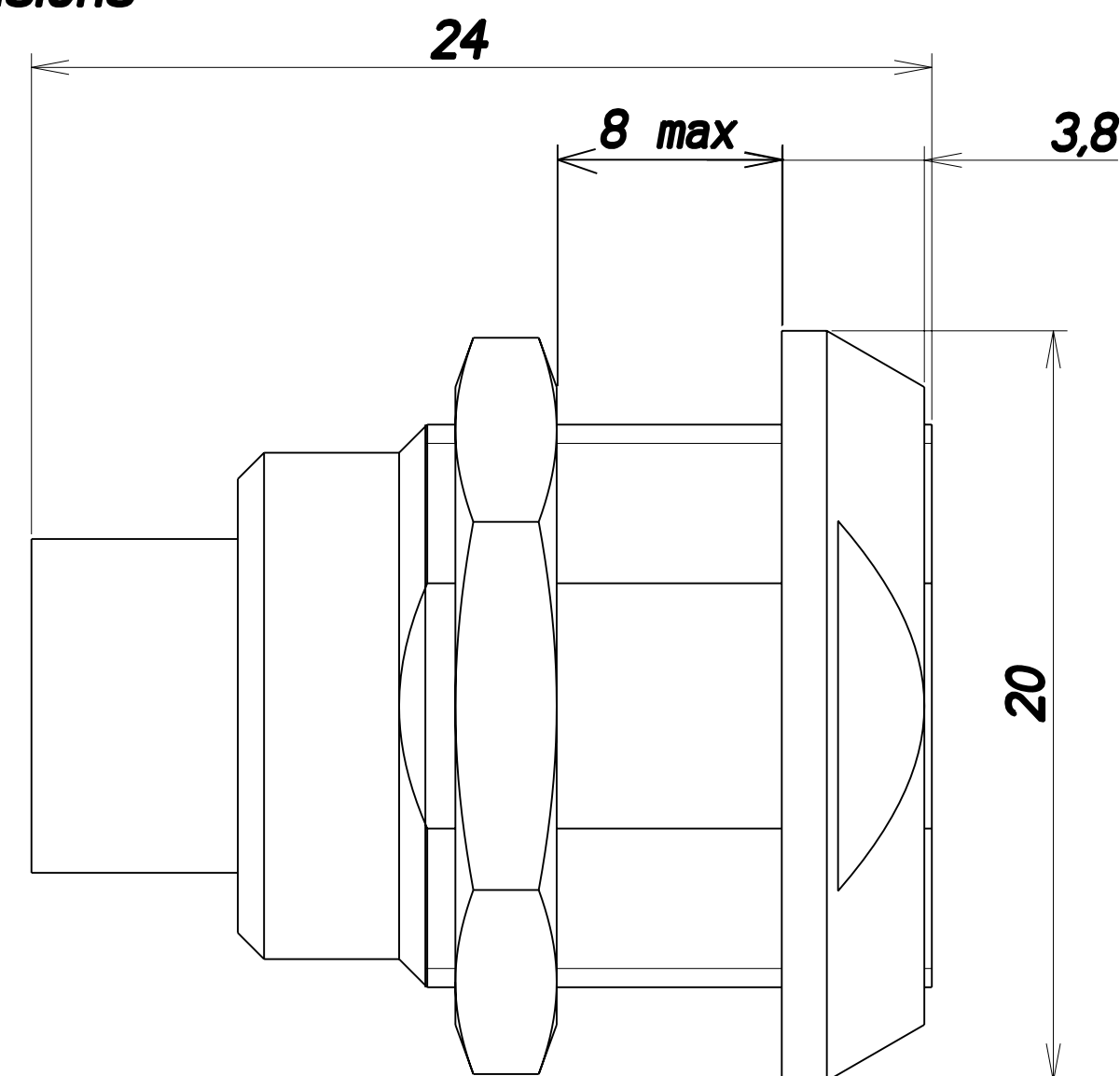


13,6

15,1



Dimensions  
(mm)




**DOUBLE NUT RECEPTACLE size 2**

ANY CHANGES TO THIS DRAWING WILL AFFECT DIMENSIONAL ANALYSIS, DATA DRAWING LE X	
LINEAR MEASURE:	$\frac{mm}{INCH}$ mm [in]
THIRD ANGLE PROJECTION	
TOLERANCES UNLESS OTHERWISE SPECIFIED	
No. OF PLACES	MM [in]
ONE PLACE	$\pm 3 [\pm .1]$
TWO PLACES	$\pm 0.5 [\pm .02]$
THREE PLACES	$\pm 0.13 [\pm .005]$
ANGLES $\pm 1^\circ$	



**INTERCONNECTIONS**

www.fciconnect.com

		xxx mm-dd-yy		xxx mm-dd-yy			
REV	DESCRIPTION			BY DATE	CHKD DATE	SHEET No.	ZONE
REVISION							
DRAWING TITLE							
DOUBLE NUT RECEPTACLE SIZE 2							
CAT NO.							
JBX-EA-2B-12-FS-SDS							
DWG RELEASED TO CENTRAL FILE: X							
CAGE NO: --		DON: --		PC:--		SIZE: C	
 <b>INTERCONNECTIONS</b>				APPROVAL	DRAWN: JAB		12-12-00
					CHKD: RC		12-12-00
					DSGN: --		--
					MFG: --		--
					QC: --		--
				DRAWING SCALE: 4/1			
				DRAWING NO.		REV	
				JBX-EA-2B-12-FS-SDS		0	
				1 OF 1			