

**SPECIFICATIONS**

**Mechanical**

**Contact Retention Force:** 0.50Kg(1.1Lb)min.  
**Durability:** 250 Cycles

**Electrical**

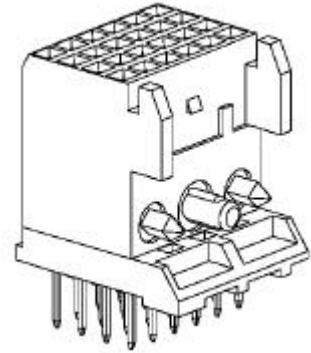
**Voltage Rating:** 750V  
**Current Rating:** 1A  
**Contact Resistance:** 50mW max.  
**Dielectrical Withstanding Voltage:** 1000V  
**Insulation Resistance:** 1000MW min.

**Physical**

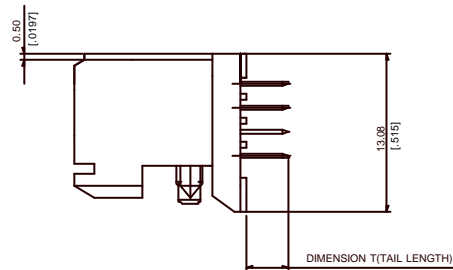
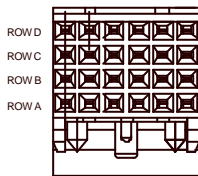
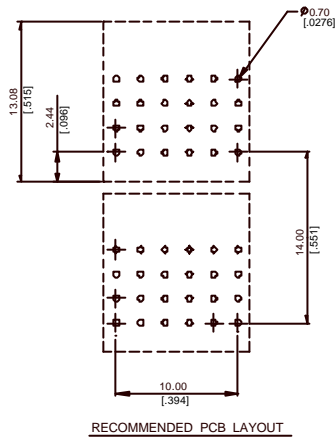
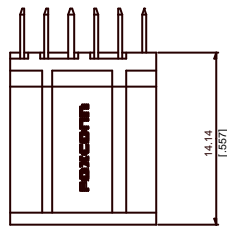
**Housing:** LCP, UL 94-0, Ivory White  
**Contact:** Phosphor Bronze  
**Plating:** See "ORDERING INFORMATION"

**FUTURE BUS CONNECTOR**

**1F Series,**  
**Rec. Solder Fit Type**  
**2.0mm [.078"] Pitch**  
**4Rows**



**DRAWING**



**ORDERING INFORMATION**

PRODUCT NO.: 1 F 1 2 0 2 4 \* - S \* 0 3 - \*

PLATING SPEC.  
 3: Au:30u" MIN.

TAIL LENGTH (T)  
 4: 3.50 mm

LEAD FREE CODE  
 NONE: Sn/P3  
 F: LEAD FREE