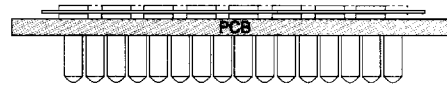
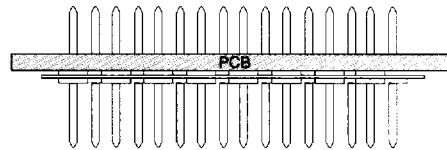
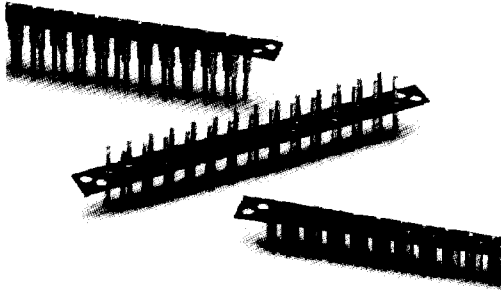


Staggered .050" (1.27mm) Pitch Board to Board Interconnections



Features:

- Supplied in high temperature Peel-A-Way® removable terminal carrier.
- Sockets and adapters are designed in mating pairs.
- .050" (1.27mm) and .100" (2.54mm) centers pin to pin.
- High reliability screw machine terminals with closed end construction for 100% anti-wicking of solder.

Terminals and Contacts:

Terminal: Brass - Copper Alloy 360, ASTM-B-16

Contact: Beryllium Copper - Copper Alloy 172, ASTM-B-194

Plating:

Terminal: Gold over Nickel or Tin-Lead over Nickel

Contact: Gold over Nickel or Tin-Lead over Nickel

Gold per MIL-G-45204

Tin-Lead per MIL-P-81728

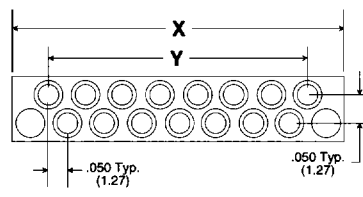
Nickel per QQ-N-290

Body Material:

Polyimide Film

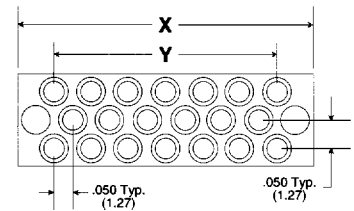
Temp. range -269°C to 400°C (-452°F to 752°F)

Dual Row
KEA - Male / KES - Female



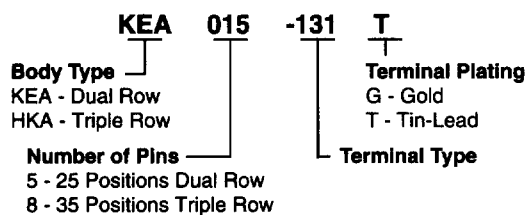
# of Pins	X	Y
5	.400 (10.16)	.200 (5.08)
9	.600 (15.24)	.400 (10.16)
15	.900 (22.86)	.700 (17.78)
19	1.100 (27.94)	.900 (22.86)
25	1.400 (35.56)	1.200 (30.48)

Triple Row
HKA - Male / HKS - Female

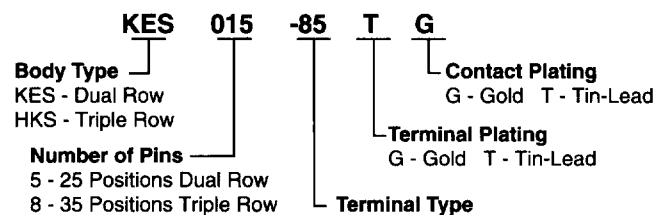


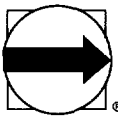
# of Pins	X	Y
8	.400 (10.16)	.200 (5.08)
14	.600 (15.24)	.400 (10.16)
20	.800 (20.32)	.600 (15.24)
26	1.000 (25.40)	.800 (20.32)
35	1.300 (33.02)	1.100 (27.94)

How To Order - Male



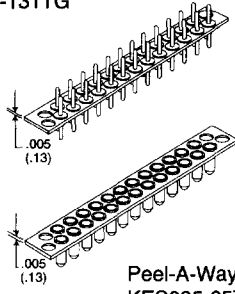
How To Order - Female





Staggered .050" (1.27mm) Pitch Board to Board Interconnections

Peel-A-Way® Male
KEA025-131TG



Peel-A-Way® Female
KES025-85TG

Figure 1
Thru Hole

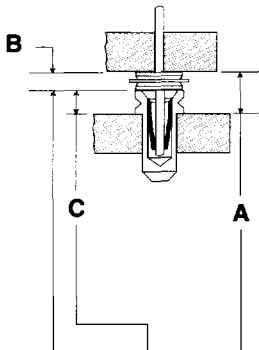
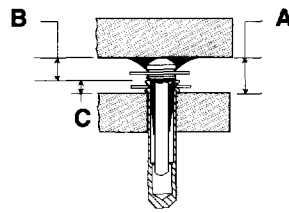


Figure 2
Surface Mount



Order One Each Male & Female
To Get the Required "A" Dim.

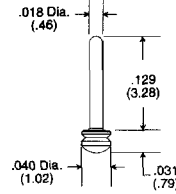
B	C	A	Male Part #	Female Part #	Fig. #
.031 (.79)	.015 (.38)	.046 (1.17)	KEA015-131G	KES015-210TG	1
.031 (.79)	.015 (.38)	.046 (1.17)	KEA015-525G	KES015-210TG	2
.031 (.79)	.031 (.79)	.062 (1.57)	KEA015-131G	KES015-85TG	1
.031 (.79)	.031 (.79)	.062 (1.57)	KEA015-525G	KES015-85TG	2
.050 (1.27)	.015 (.38)	.065 (1.65)	KEA015-526G	KES015-210TG	2
.050 (1.27)	.031 (.79)	.081 (2.06)	KEA015-526G	KES015-85TG	2
.070 (1.78)	.015 (.38)	.085 (2.16)	KEA015-321G	KES015-210TG	1
.050 (1.27)	.043 (1.09)	.093 (2.36)	KEA015-526G	KES015-246TG	2
.085 (2.16)	.015 (.38)	.100 (2.54)	KEA015-322G	KES015-210TG	1
.070 (1.78)	.031 (.79)	.101 (2.57)	KEA015-321G	KES015-85TG	1
.085 (2.16)	.031 (.79)	.116 (2.95)	KEA015-322G	KES015-85TG	1

15 Position Dual Row Part Numbers Shown
For Additional Ordering Information See Page 62

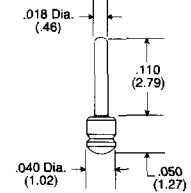
If required "A" dimension is not shown, consult factory.

Male Terminal Information

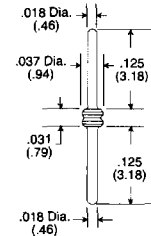
Type -525



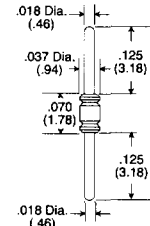
Type -526



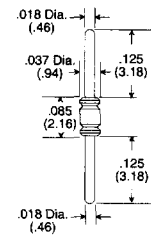
Type -131



Type -321



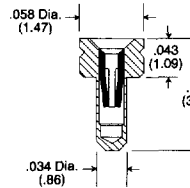
Type -322



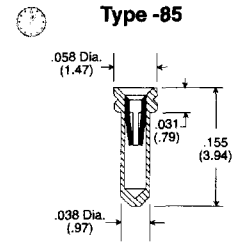
Female Terminal Information

Type -246

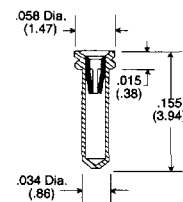
mates with -526 only



Type -85



Type -210



Quick turn delivery available on standard terminal types.
Additional terminal types available.
See terminal section for detailed terminal information.