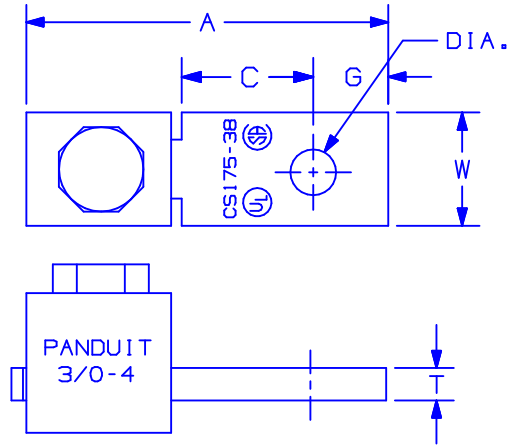


NOTES:



1. UL AND CSA LOGOS ARE TO APPEAR ON ALL PARTS AS SHOWN.
2. "P" PANDUIT LOGO OR "PANDUIT" IS TO BE STAMPED ON ALL PARTS.
3. MATERIAL: COPPER
4. ADDITIONAL MULTIPLE WIRE COMBINATIONS FOR CS35-36-C ARE:

A. TWO-#10'S	D. ONE-#10 WITH ONE-#12
B. TWO-#12'S	E. ONE-#12 WITH ONE-#14
C. TWO-#14'S	
5. ADDITIONAL MULTIPLE WIRE COMBINATIONS FOR CS70-14-C ARE:

A. ONE-#8 WITH ONE-#4
B. ONE-#8 WITH ONE-#6

CATALOG NUMBER	COPPER CONDUCTOR SIZE RANGE	CURRENT RATING (AMPS)	BOLT HOLE SIZE	SLOTTED SCREW/ HEX SIZE	DIMENSIONS IN INCHES				
					A	W	G	C	T
CS25-18-C	#14-#10	25	1/8	SLOTTED	1.16	.32	.19	.56	.07
CS35-36-C	#14-#6*	50	3/16	SLOTTED	1.14	.38	.22	.38	.07
CSA70-14-C	#14-#4	70	1/4	SLOTTED	1.30	.50	.27	.44	.08
CS70-14-C	#12-#1	90	1/4	SLOTTED	1.50	.50	.25	.56	.08
CS125-14-Q	#2-#1/0	125	1/4	SLOTTED	1.94	.62	.44	.56	.13
CS175-38-Q	#4-#3/0	175	3/8	9/16	2.19	.75	.44	.81	.16
CS225-56-Q	#6-#4/0	225	5/16	5/8	2.38	1.00	.50	.69	.13
CS300-38-Q	#1-350	300	3/8	3/4	3.19	1.00	.50	1.13	.19
CS400-38-3	#1/0-500	400	3/8	3/4	3.88	1.50	.94	1.25	.19
CS650-12-3	600-1000	650	1/2	1 1/8	5.13	2.00	1.19	1.63	.25

* ANY COMBINATIONS

C41176_04

04	6/04	KF		ADD "SLOTTED SCREW" TO HEX SIZE IN TABLE. REPLACED ** WITH "SLOTTED"; UPDATED NOTES			
03	4/02	SAB	JAC	UPDATED DRAWING TO REFLECT PARTS	10170	JAC	RK
02	7/01	SAB	SKB	FILESPEC WAS N41176CA_PCD_01 AND ADDED NOTES 5 AND 6	09748	JAC	RK
01	1/00	ED	SKB	ADDED HEX SIZE AND DIA DIMENSION TO DRAWING	08195	JCJ	TRO
REV	DATE	BY	CHK	DESCRIPTION	ECN #	APP	PM



TINLEY PARK, ILLINOIS

SINGLE BARREL LUG TYPE CS
CUSTOMER DRAWING

DRAWN BY	CHK'D	SCALE	DRAWING NO.
EJD	WJB	N/A	C41176