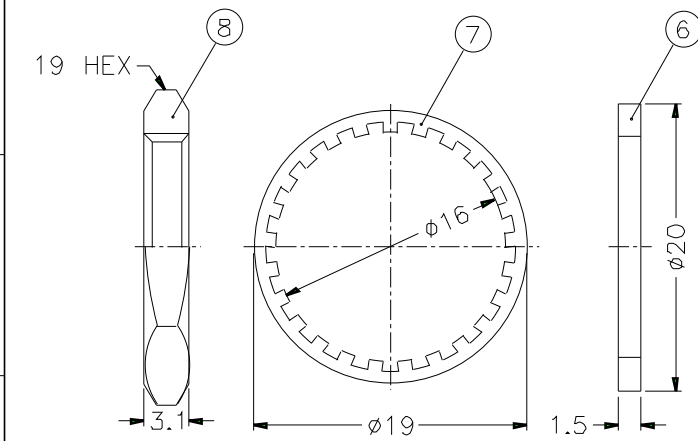


REVISIONS		
ISS	ZONE	DESCRIPTION\PER REQUEST\DATE



- NOTES: FINISH (PLATING THICKNESS IN MICRO-INCHES)
- 1 BRASS PER QQ-B-626
  - 2 BRASS PER QQ-B-613
  - 3 NICKEL PL. 100 MIN. THICK OVER COPPER STRIKE
  - 4 PHOSPHOR BRONZE PER QQ-B-750
  - 5 GOLD PL. 3 MIN. THICK OVER NICKEL PL. 100 MIN. THICK OVER COPPER STRIKE
  - 6 TEFLON MIL-P-19468
  - 7 JIS H3250, C 2700

10	FERRULE	NOTE 1	NOTE 3	1	FR-39/32X95
9	CONTACT PIN	NOTE 1	NOTE 5	1	B50003-9-0.6
8	HEX NUT	NOTE 1	NOTE 3	1	HN19-5/8-24X31
7	LOCK WASHER	NOTE 2	NOTE 3	1	LW-19/16X06
6	GASKET	SILICONE	RED	1	GS-20/16X15
5	INSULATOR	NOTE 6	NATURAL	1	N6421G1-5T-50
4	CONTACT PIN	NOTE 4	NOTE 5	1	N6421G1-4-1.05-B
3	BARREL	NOTE 1	NOTE 3	1	N6421G1-3-27/17
2	INSULATOR	NOTE 6	NATURAL	1	N6421G1-2T-50-B
1	BODY	NOTE 1	NOTE 3	1	N7400-1
NO.	DESCRIPTION	MATERIAL	FINISH	Q'TY	DRAWING NO.

DIMENSIONS ARE IN MILLIMETERS  
 UNLESS OTHERWISE SPECIFIED  
 TOLERANCES  
 0.5-6 = ±0.2  
 6-30 = ±0.4  
 30-120 = ±0.6  
 120-315 = ±1  
 315-1000 = ±1.6  
 1000-2000 = ±2.4

PART NO.	N6421G1NT3G550	
APPROVED	DATE	10-11-01'
CHECKED	DATE	10-11-01'
DRAWN	DATE	10-11-01'
FILE NO.		

**Amphenol**

TITLE N BULKHEAD CRIMP JACK  
(FOR RG-174/U,188A/U,316/U)

DRAWING NO. KJ-N6421G1-NT3G-316U-50

ITEM NO.  

1. CRIMPED FERRULE  
HEX CRIMP SIZE .128"
2. CRIMPED CONTACT PIN  
SQ. CRIMP SIZE 0.7(mm)
3. MAX. PANEL THICKNESS=6.5mm