

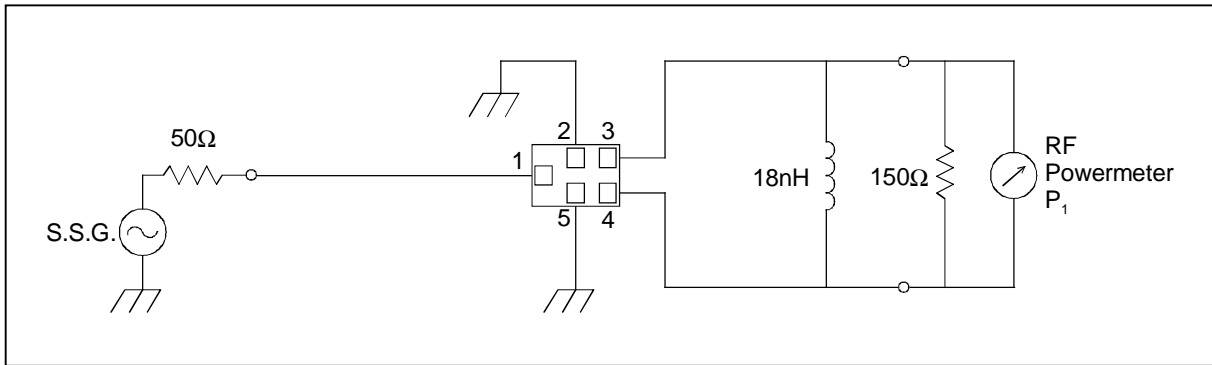
# SAW FILTER FOR GSM1800 (Rx)

Murata part number : SAFED1G84FB0F00

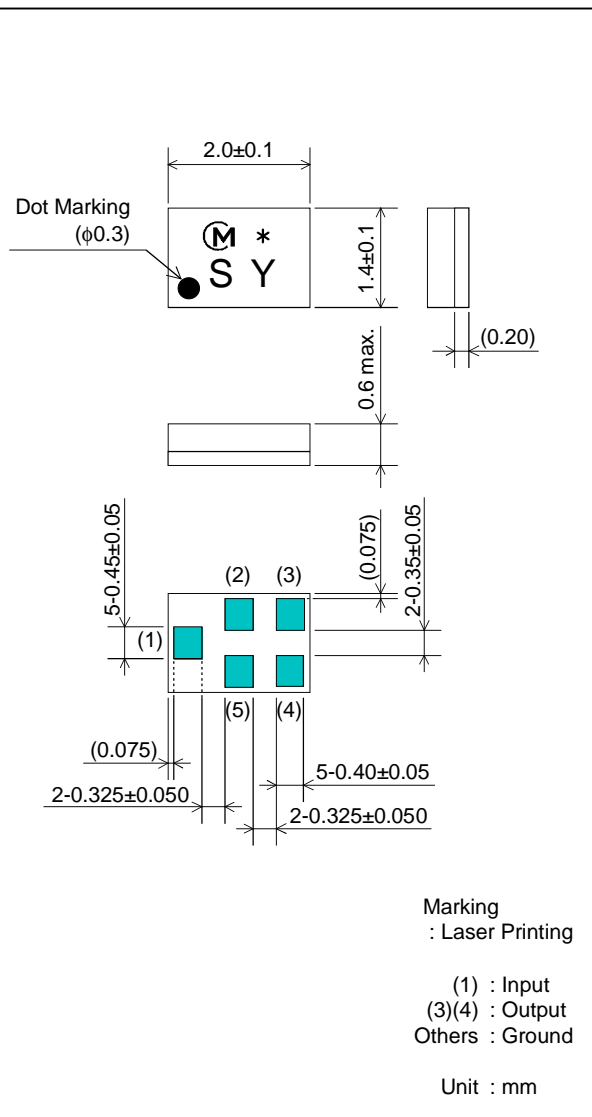
## Feature

1. Low Insertion Loss (2.0 dB max.)
2. Ultra Small SMD package (2.0x1.4mm package)
3. Balance type (50Ω//150Ω)

## Test Circuit



## Package Dimensions



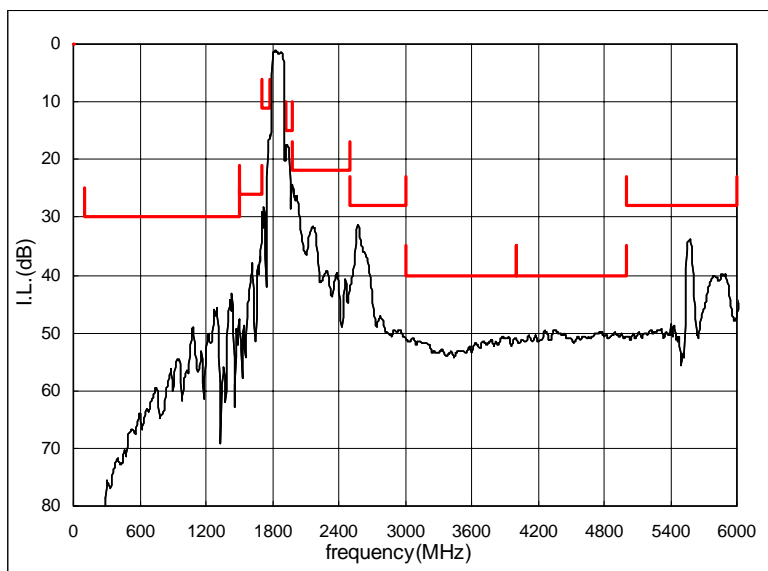
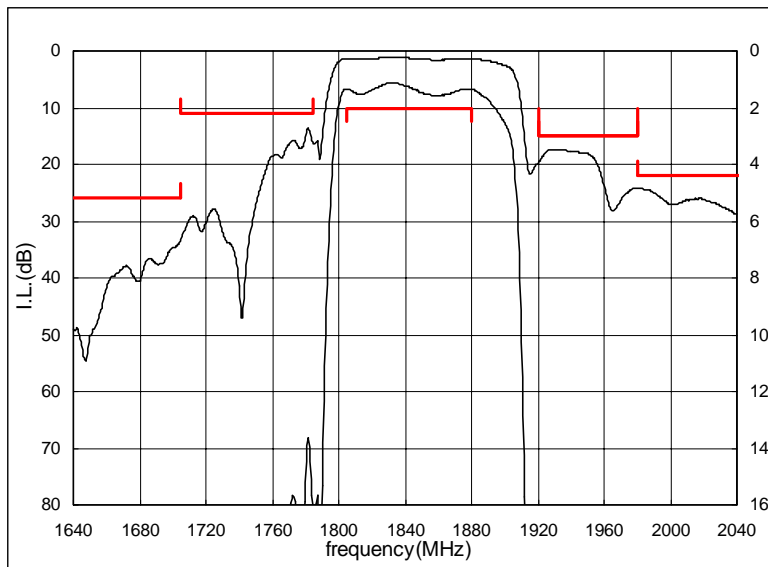
## Specification

Item	Specification		
	-10 to 80°C	25±2°C	typ.
Nominal Center Frequency(fc)	1842.5MHz		
Insertion Loss (1805 to 1880MHz)	2.0dB max.	1.9dB max.	1.6 dB
Absolute Attenuation			
1) 100 to 1500 MHz	30 dB min.	30 dB min.	34 dB
2) 1500 to 1705 MHz	26 dB min.	28 dB min.	33 dB
3) 1705 to 1785 MHz	11 dB min.	12 dB min.	14 dB
4) 1920 to 1980 MHz	15 dB min.	15 dB min.	17 dB
5) 1980 to 2500 MHz	22 dB min.	22 dB min.	24 dB
6) 2500 to 3000 MHz	28 dB min.	28 dB min.	31 dB
7) 3000 to 4000 MHz	40 dB min.	40 dB min.	50 dB
8) 4000 to 5000 MHz	40 dB min.	40 dB min.	50 dB
9) 5000 to 6000 MHz	28 dB min.	28 dB min.	34 dB
Ripple Deviation (1805 to 1880MHz)	1.3dB max.	1.0dB max.	0.5 dB
VSWR (1805 to 1880MHz)	2.5 max.	2.3 max.	2.0
Amplitude Balance (1805 to 1880MHz)	±1.2dB max.	±1.2dB max.	±0.7dB
Phase Balance (1805 to 1880MHz)	180±10deg. max.	180±10deg. max.	180±5deg.
Input Impedance (nominal)	50Ω		
Output Impedance (nominal)	150Ω//18nH		

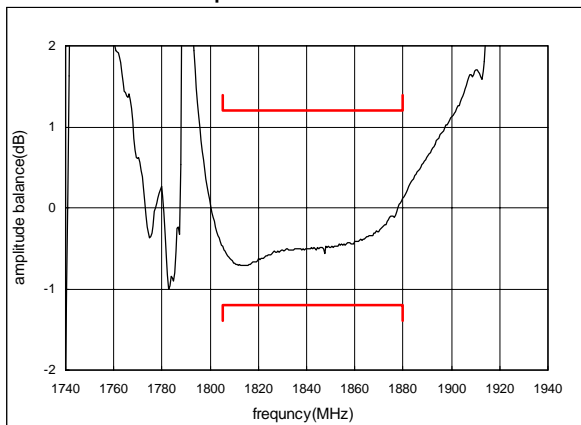
# SAW FILTER FOR GSM1800 (Rx)

Murata part number : SAFED1G84FB0F00

## Frequency Performance



Amplitude balance



Phase balance

