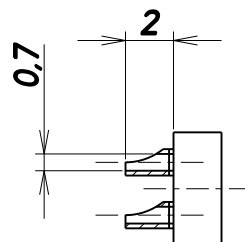
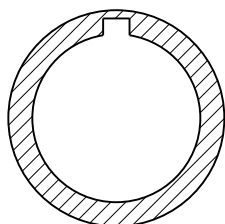


# Insulator Viewed from wiring side

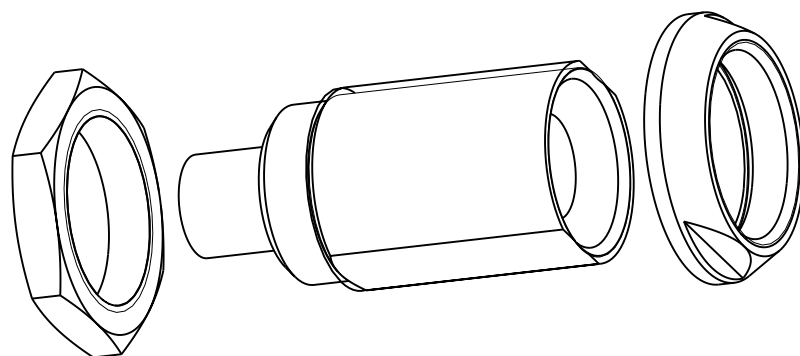
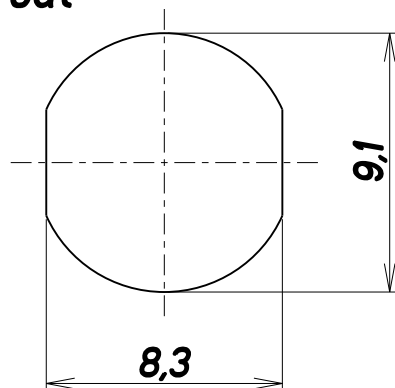
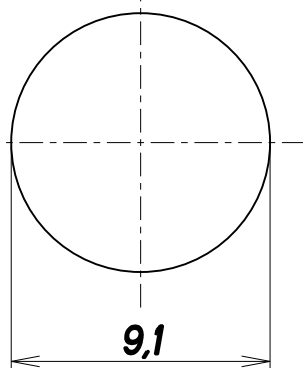


5 sockets x 0.7 mm

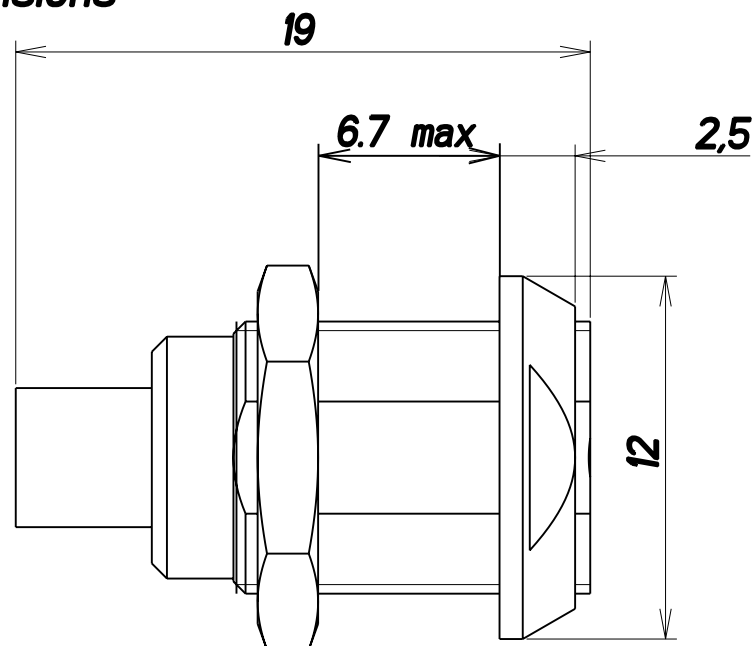
## Keying




## Panel cut-out



## Dimensions (mm)



## DOUBLE NUT RECEPTACLE size 0

			xxx mm-dd-yy	xxx mm-dd-yy			
REV	DESCRIPTION		BY DATE	CHKD DATE	SHEET No.	ZONE	
REVISION							
DRAWING TITLE							
DOUBLE NUT RECEPTACLE SIZE 0							
CAT NO.							
JBX-EA-0J-05-FS-SDS							
DWG RELEASED TO CENTRAL FILE: X			APPROVAL	DRAWN: JAB		10-31-0	
CAGE NO: --		DON: --		PC: --	SIZE: A	CHKD : RC	10-31-0
				DSGN : --	--		
				MFG : --	--		
				QC : --	--		
		INTERCONNECTIONS		DRAWING SCALE: 4/1			
				DRAWING NO.		REV	
				JBX-EA-0J-05-FS-SDS		0	
				I OF I			
				www.fciconnect.com			