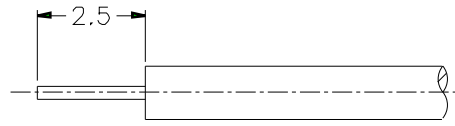
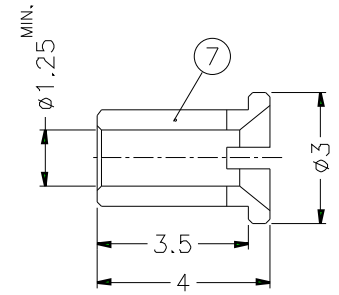
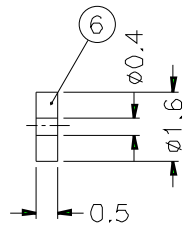
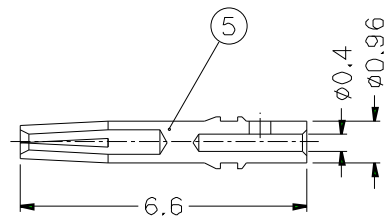
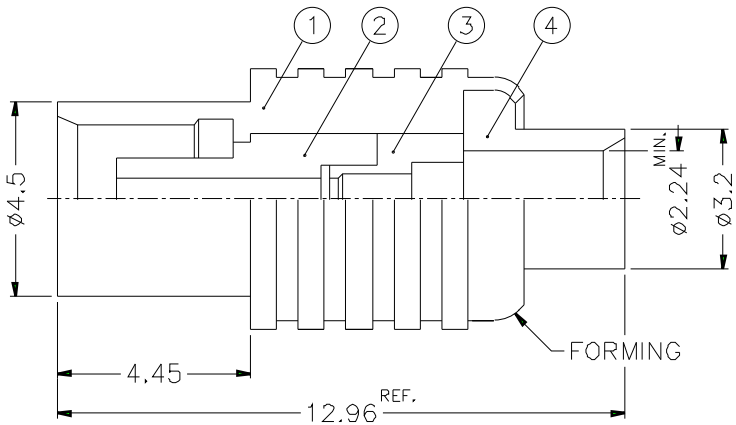


REVISIONS		
ISS	ZONE	DESCRIPTION\PER REQUEST\DATE



RECOMMENDED
CABLE STRIPPING DIM'S



- NOTES: FINISH (PLATING THICKNESS IN MICRO-INCHES)
- BRASS PER QQ-B-626
 - GOLD PL. 3 MIN. THICK OVER NICKEL PL. 100 MIN. THICK OVER COPPER STRIKE
 - BERYLLIUM COPPER PER QQ-C-530
 - GOLD PL. 30 MIN. THICK OVER NICKEL PL. 100 MIN. THICK OVER COPPER STRIKE
 - TEFLON MIL-P-19468

1. CONTACT PIN TO SOLDER

7	SOLDER BARREL	NOTE 1	NOTE 2	1	SMB1181A1-7
6	INSULATOR	NOTE 5	NATURAL	1	SMB6181A1-5T-50
5	CONTACT PIN	NOTE 3	NOTE 4	1	SMB6121B2-5-096/04
4	BARREL	NOTE 1	NOTE 2	1	SMB6181A1-4-32/224-B
3	INSULATOR	NOTE 5	NATURAL	1	SMB6121B2-3T-50
2	INSULATOR	NOTE 5	NATURAL	1	MCX6121A1-2T-50
1	BODY	NOTE 1	NOTE 2	1	MCX6181A1-.047-1
NO.	DESCRIPTION	MATERIAL	FINISH	Q'TY	DRAWING NO.

DIMENSIONS ARE IN MILLIMETERS		
UNLESS OTHERWISE SPECIFIED TOLERANCES		
0.5-6	= ±0.2	
6-30	= ±0.4	
30-120	= ±0.6	
120-315	= ±1	
315-1000	= ±1.6	
1000-2000	= ±2.4	
SCALE	6/1	ISSUE
		A
FILE NO		

PART NO.	MCX6181A1-3GT30G-13-50
APPROVED	DATE 10-11-01'
CHECKED	DATE 10-11-01'
DRAWN	DATE 10-11-01'
Amphenol	
TITLE MCX DIRECT SOLDER JACK (FOR .047")	
DRAWING NO. KJ-MCX6181A1-3GT30G-.047-50	
ITEM NO.	