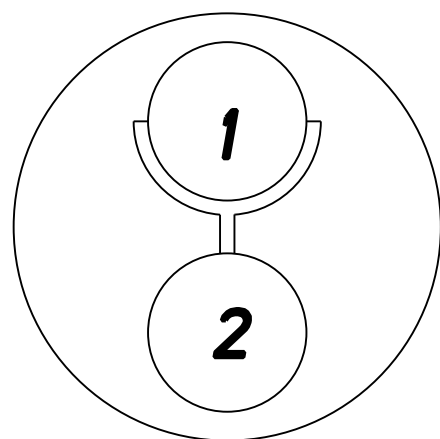
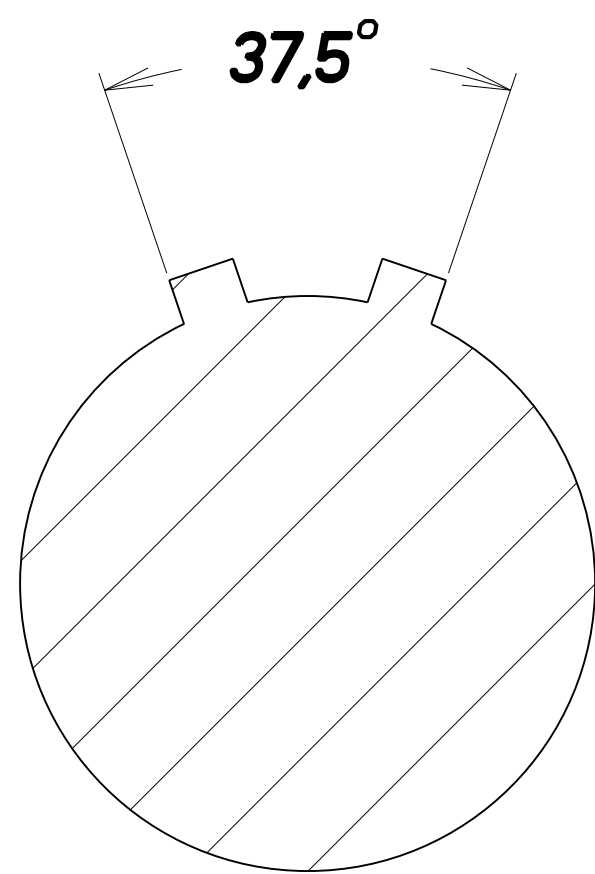


**Insulator**  
**Viewed from wiring side**

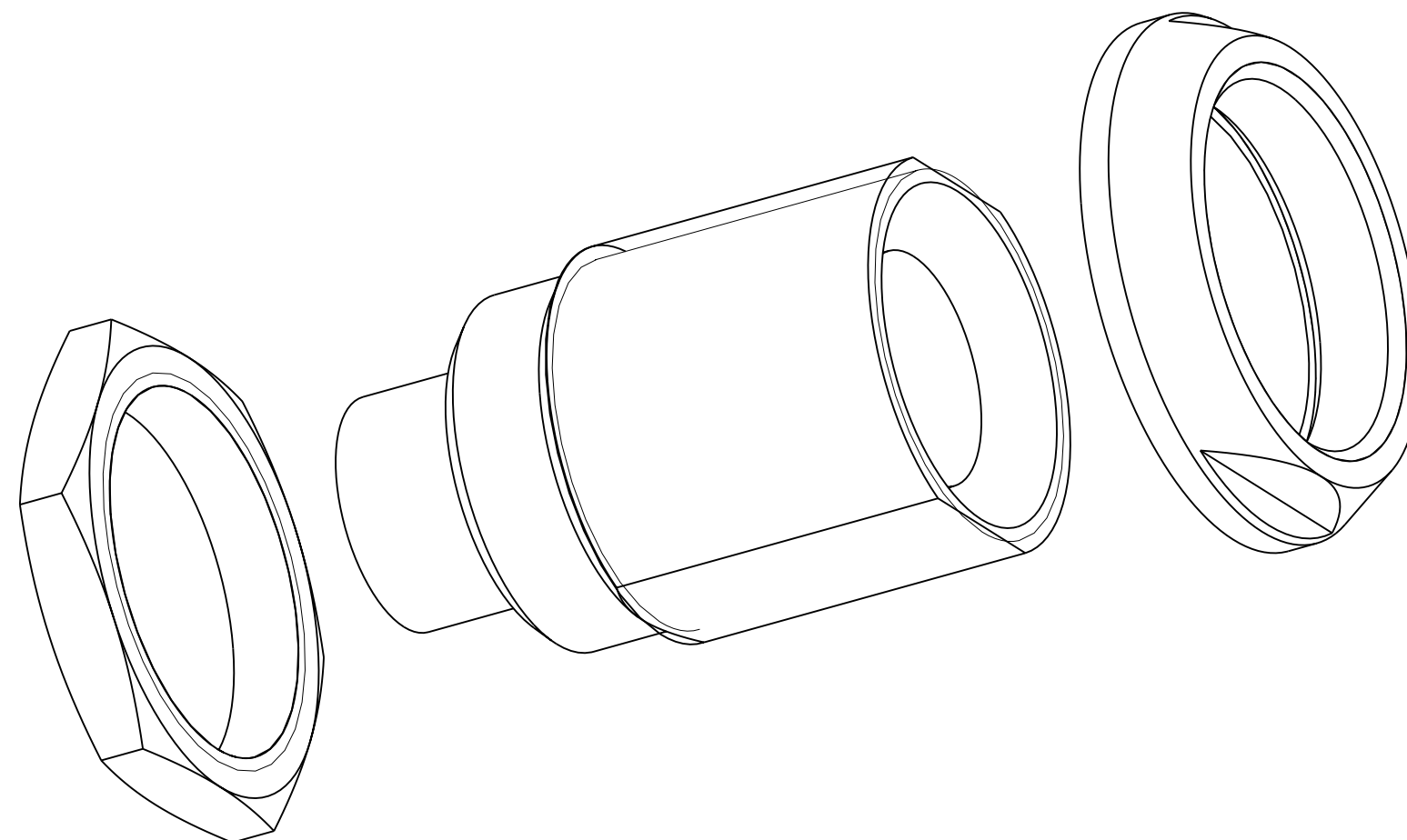
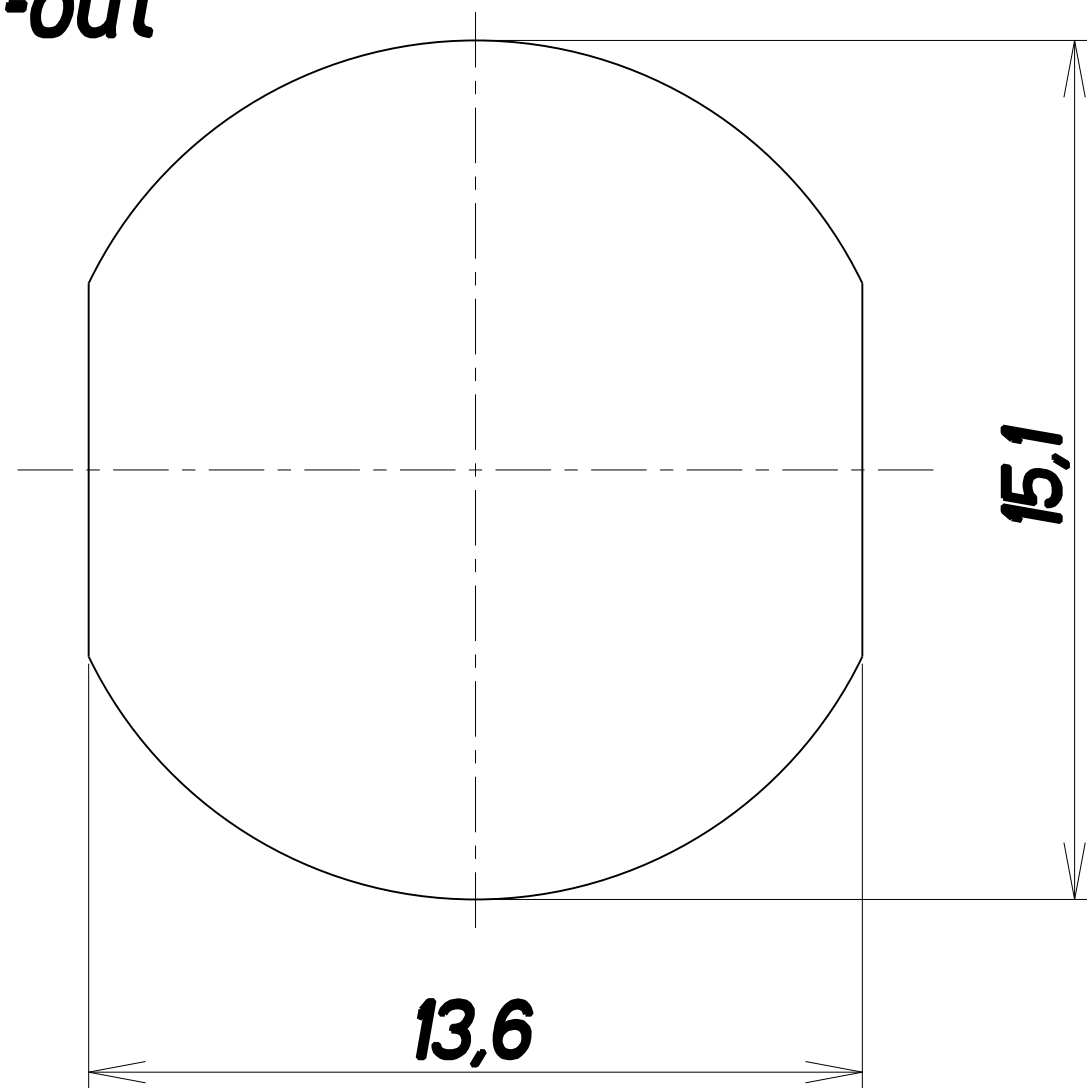
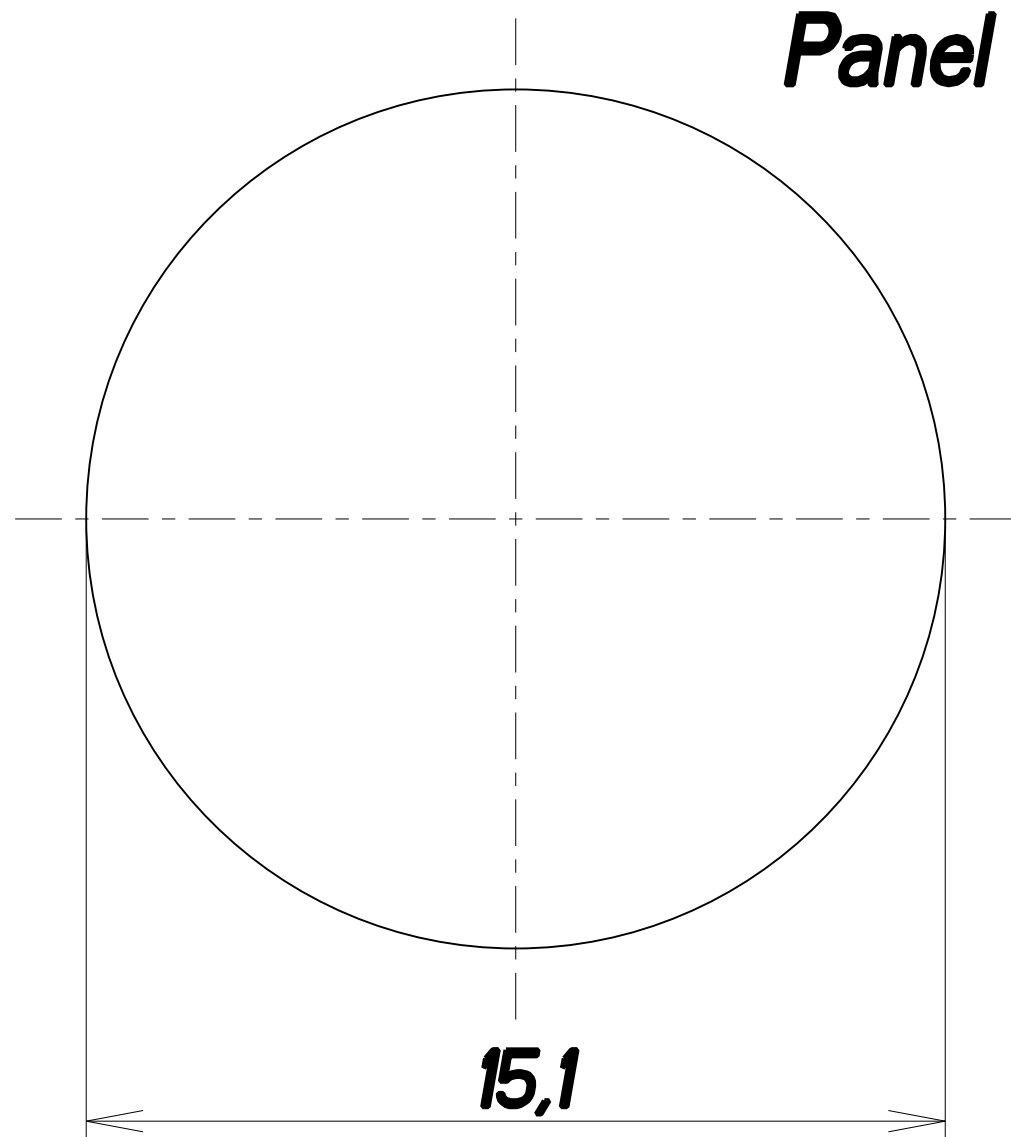


**2 sockets x 2 mm**

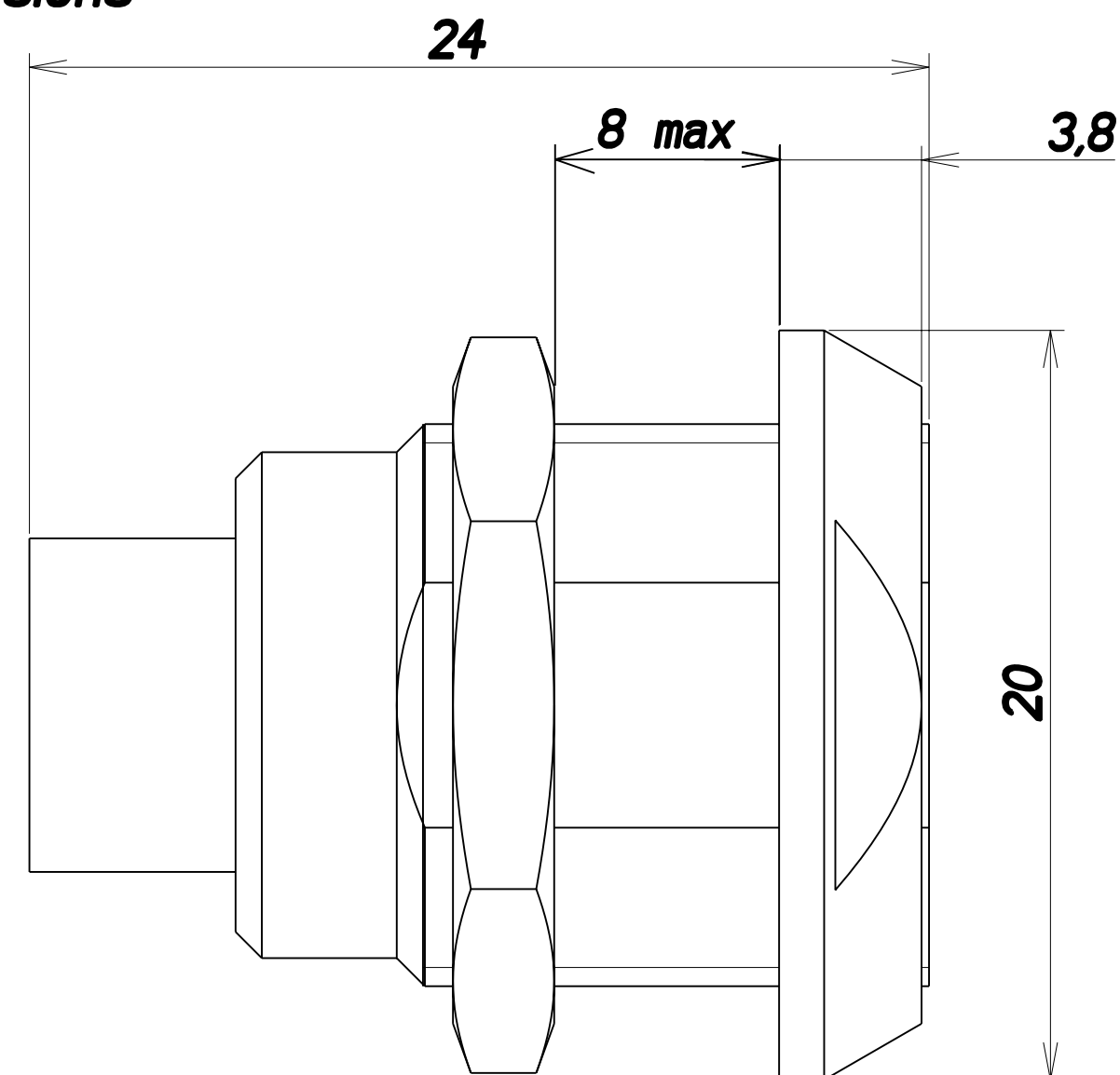


**Keying**

**Panel cut-out**



**Dimensions**  
**(mm)**



**DOUBLE NUT RECEPTACLE size 2**

ANY CHANGES TO THIS DRAWING WILL AFFECT DIMENSIONAL ANALYSIS, DATA DRAWING LE X	
LINEAR MEASURE:	$\frac{mm}{INCH}$ mm [inch]
THIRD ANGLE PROJECTION	
TOLERANCES UNLESS OTHERWISE SPECIFIED	
No. OF PLACES	MM [in]
ONE PLACE	$\pm 3$ [ $\pm .1$ ]
TWO PLACES	$\pm 0.5$ [ $\pm .02$ ]
THREE PLACES	$\pm 0.13$ [ $\pm .005$ ]
ANGLES $\pm 1^\circ$	

REVISION		xxx mm-dd-yy	xxx mm-dd-yy		
REV	DESCRIPTION	BY DATE	CHKD DATE	SHEET No.	ZONE
DRAWING TITLE					
DOUBLE NUT RECEPTACLE SIZE 2					
CAT NO. JBX-EA-2J-02-FC-SDS					
DWG RELEASED TO CENTRAL FILE: X					
CAGE NO: -- DON: -- PC:-- SIZE: C					
DRAWN: JAB 12-12-00					
CHKD : RC 12-12-00					
DSGN : -- --					
MFG : -- --					
QC : -- --					
DRAWING SCALE: 4/1					
DRAWING NO. REV					
JBX-EA-2J-02-FC-SDS 0					
www.fciconnect.com 1 OF 1					



**INTERCONNECTIONS**