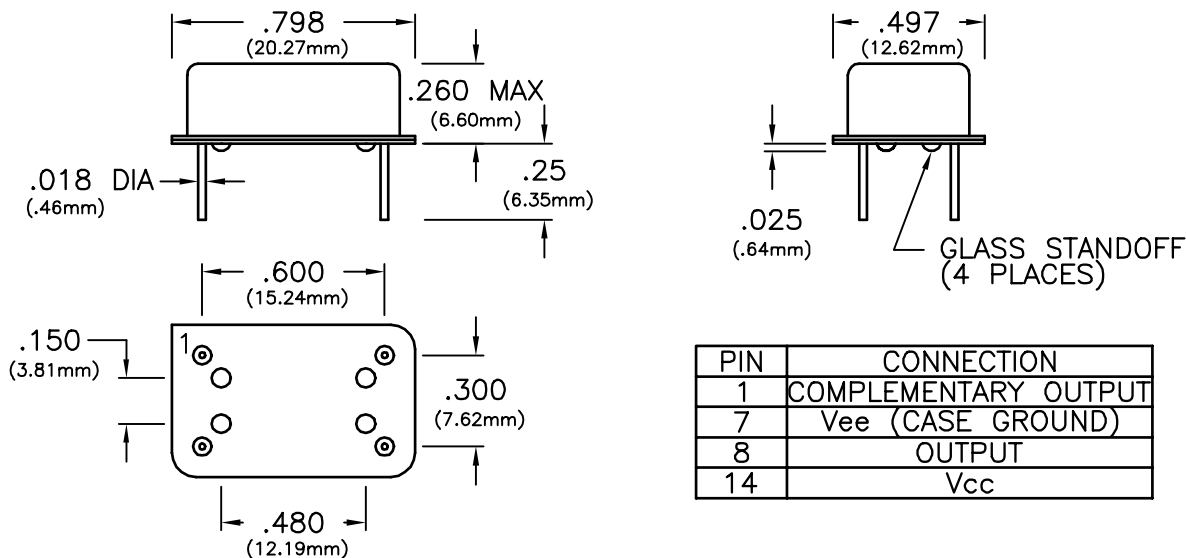
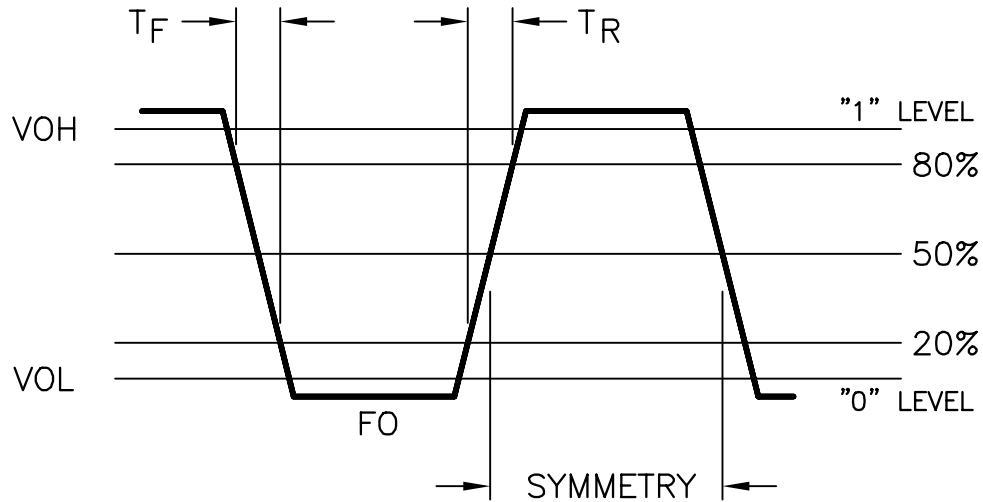


14 PIN DIP 3.3V PECL

SPECIFICATIONS	EE14-511	EE14-521	EE14-531	EE14-541
Frequency Range	13MHz to 160MHz			
Frequency Stability	±25ppm	±50ppm	±100ppm	±20ppm
	(Inclusive of calibration tolerance at 25°C, operating temperature range, input voltage change, load change, aging, shock and vibration)			
Temperature Range	0°C to +70°C			
Output	Waveform	Low Voltage, PECL Squarewave		
		Output must be terminated into 50 ohms to Vcc-2V		
	Voltage Voh	2.275 Minimum		
	Vol	1.68 Maximum		
	Duty Cycle	45/55 Maximum measured at 1.97V		
	Rise/Fall Time	1.0nS Maximum measured from 20% to 80%		
Jitter	1.0ps RMS Maximum over 12KHz to 20MHz bandwidth 5.0ps RMS Maximum over 10Hz to 20MHz bandwidth			
Supply Voltage	+3.3Vdc ±5%			
Supply Current	60mA Maximum			
Package	All metal, hermetically sealed, welded package			



OUTPUT WAVEFORM



TEST CIRCUIT

