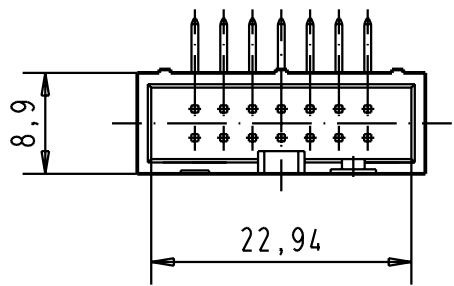
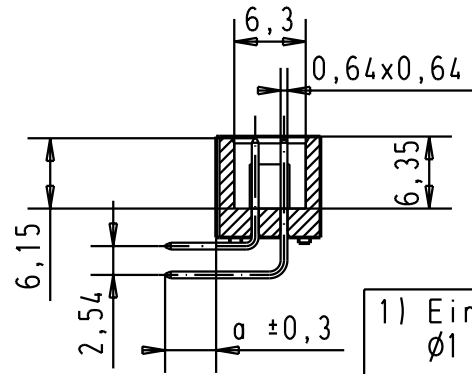
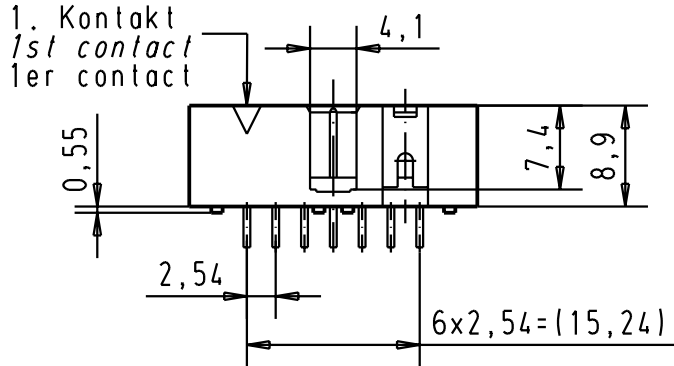
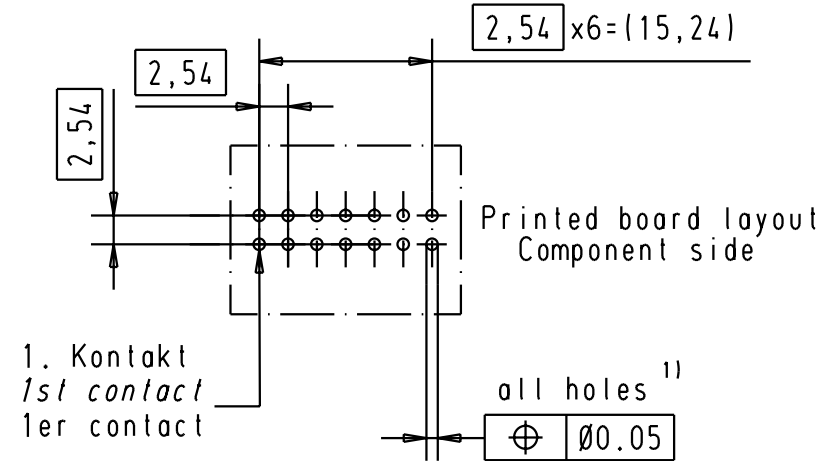
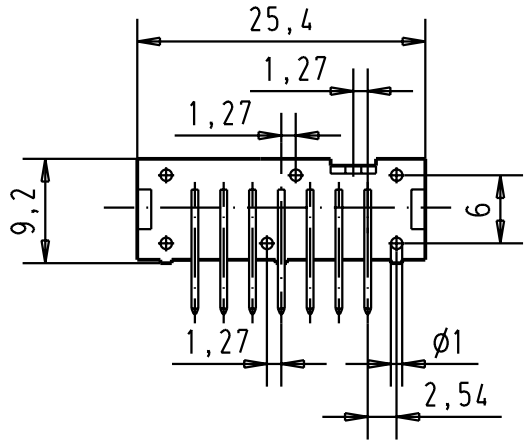




5 4 3 2 1



1) Einlotstifte passend für Lochungen
 $\phi 1 \pm 0,1$ nach IEC 60326-3
 Solder pins for PCB connections
 $\phi 1 \pm 0,1$ as per IEC 60326-3
 A souder pour des trous de $\phi 1 \pm 0,1$
 selon IEC 60326-3

A	09195147321	3	4,5							 All Dim. in mm Orig. Size DIN A 4	SEK 19 Male connector 14 poles, low profile, high temperature with angled pins	Maßstab/ Scale 1.5:1			
	09195146321	2	4,5				Detail.	25-APR-02	CV						
	09195145321	0.76 μm Au	4,5				Insp.								
	09195147323	3	2,9				Stand.								
	09195146323	2	2,9				HARTING EUROL F-95972 Paris							TB 0919514x32x	Blatt/ Page 2 / 2
	09195145323	0.76 μm Au	2,9	29778	25-APR-02	CV									
	Part-No.	performance level	0	Mod.	Dat.	Name				Sub.					