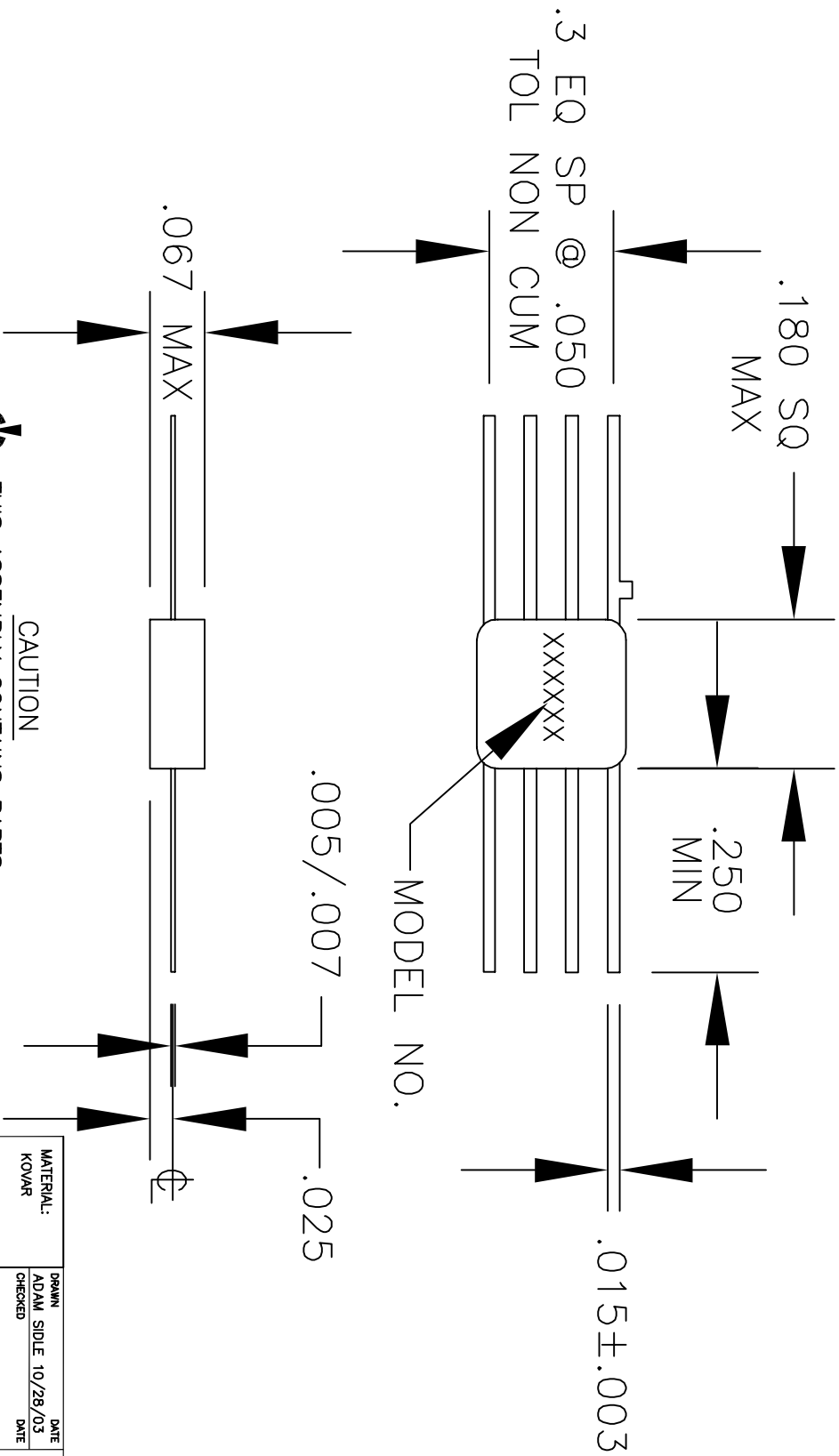


OTL_042

REVISIONS

LTR	DESCRIPTION	DATE	APPROVED
-	ECN 12429, RELEASE	10/29/03	



CAUTION

THIS ASSEMBLY CONTAINS PARTS SENSITIVE TO DAMAGE BY ELECTRO-STATIC DISCHARGE (ESD). USE ESD PRECAUTIONARY PROCEDURES WHEN TOUCHING, REMOVING OR INSERTING.

MATERIAL: KOVAR	DRAWN ADAM SIDLE	DATE 10/28/03	<p>PHILADELPHIA OPERATIONS 2707 BLACK LANE PLACE PHILADELPHIA PA 19154 (USA)</p>
FINISH: NICKEL/GOLD	CHECKED	DATE	
DIMENSIONS: INCHES	ENGINEERING	DATE	<p>OUTLINE DRAWING FP7</p>
TOLERANCE .XX +/- .01 .XXX +/- .005	MANUFACTURING	DATE	
ANG 1 X DES	QUALITY	DATE	<p>CODE IDENT NO. 60979</p> <p>ABY 23100042</p>
K:\ENG\AQLT\MN\OUTLINE\23100042			SHT 1 OF 1