

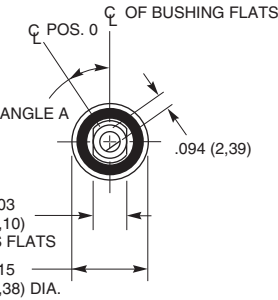
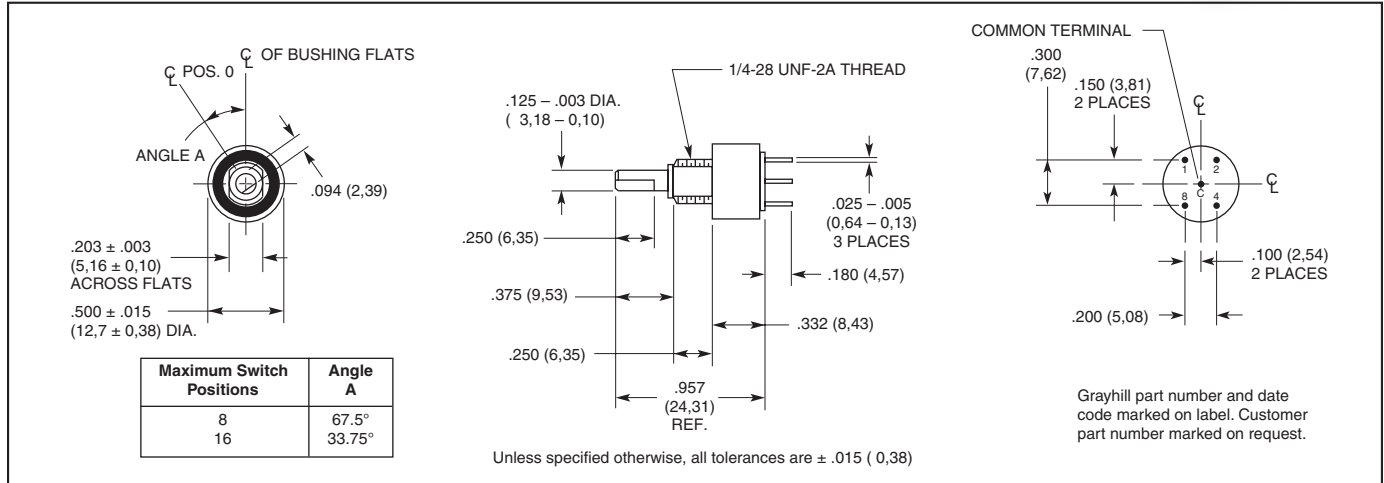
SERIES 26 Binary and Gray Code

AVAILABLE CODES

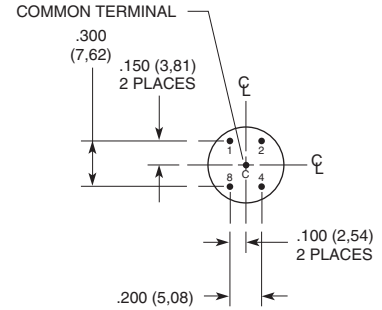
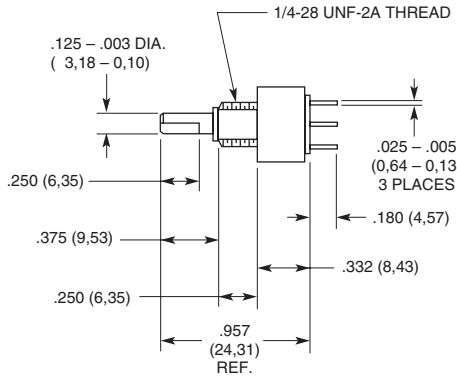
- Hexadecimal
- Octal
- BCD (Adjusted)
- Quadrative
- Custom (4-Bit, 16 position maximum)
- RoHS Compliant



DIMENSIONS In inches (and millimeters)



Maximum Switch Positions	Angle A
8	67.5°
16	33.75°



Grayhill part number and date code marked on label. Customer part number marked on request.

SPECIFICATIONS

Electrical Ratings

Rated: 25,000 cycles with logic compatible loads. Make and break 200 mA.

Contact Resistance: 500 milliohms maximum (less than 100 milliohms initially)

Insulation Resistance: 1000 megohms minimum (10,000 megohms initially)

Dielectric Strength: 250 Vac minimum

Materials and Finishes

Panel Seal: Silicone Rubber

Shaft Seal: Fluorosilicone

Mounting Nut (mounting hardware—one per switch): Brass, tin/zinc-plated

Internal Tooth Lockwasher (mounting hardware—one per switch): Steel, tin/zinc-plated

Detent Balls: Carbon steel, nickel-plated

Detent Spring: Pretinned music wire

Detent Rotor: Thermoplastic

Shaft, Stop Arm and Stop Pins: Stainless steel

Bushing: Zamak II tin/zinc alloy, zinc-plated

Switch Base: Diallyl phthalate

Printed Circuit Board: NEMA Grade FR-4.

Terminals: Brass, gold-plated over nickel plate

Contacts: Copper alloy, gold-plated over nickel plate

Additional Characteristics

Rotational Torque: 4 to 8 oz-in on a new switch.

Vibration Resistance: 10 to 55 Hz at 0.060" double amplitude; no damage and no contact openings per MIL-STD-202,

Method 201A

Shock Resistance: Passes medium requirement MIL-S-3785 (MIL-STD-202, Method 213)

Stop Strength: 5 in-lbs minimum

Terminals: All switches are provided with all 5 terminals, regardless of the number of active positions.

Relative Humidity: 90-95% at 40°C for 240 hours (MIL-STD-202 Method 103, Test Condition A)

OPTIONS

Adjustable Stop Switches

The switch may have continuous rotation, or be adjusted to limit the rotation. The panel seal ring can be removed to expose the stop pin holes on the front of the switch. Two stop pins and panel seal o-ring are supplied with the switch. One or both may be used to limit the rotation as desired.

Shaft and Panel Seal

All switches are provided with a shaft and panel seal.

ORDERING INFORMATION

BCD Output—Adjustable Stop

Number of Positions	Part Number
8 Positions	26ASD45-01-1-AJS
16 Positions	26ASD22-01-1-AJS

Available from your local Grayhill Distributor. For prices and discounts, contact a local Sales Office, an authorized local Distributor or Grayhill.

CODE AND TRUTH TABLE

Switch Position	Code Position	BCD Output*				Gray Output*			
		1	2	4	8	1	2	4	8
1	0								
2	1	●				●			
3	2		●			●	●		
4	3	●	●				●		
5	4			●			●	●	
6	5	●		●		●	●	●	
7	6		●	●		●		●	
8	7	●	●	●					●
9	8				●			●	●
10	9	●			●	●		●	●
11	10		●		●	●	●	●	●
12	11	●	●		●		●	●	●
13	12			●	●		●		●
14	13	●		●	●	●	●		●
15	14		●	●	●	●			●
16	15	●	●	●	●				●

*Dot indicates terminal tied to common.

Gray Code Output—Adjustable Stop

Number of Positions	Part Number
16 Positions	26GSD22-01-1-AJS
8 Positions	26GSD45-01-1-AJS

Custom switches with options such as 1/4" shaft diameter, longer shaft or terminals available by contacting Grayhill sales. Custom encoders with options such as: custom code output, 1/4" shaft diameter, and longer shaft and terminal lengths are available by contacting the Grayhill sales office.

