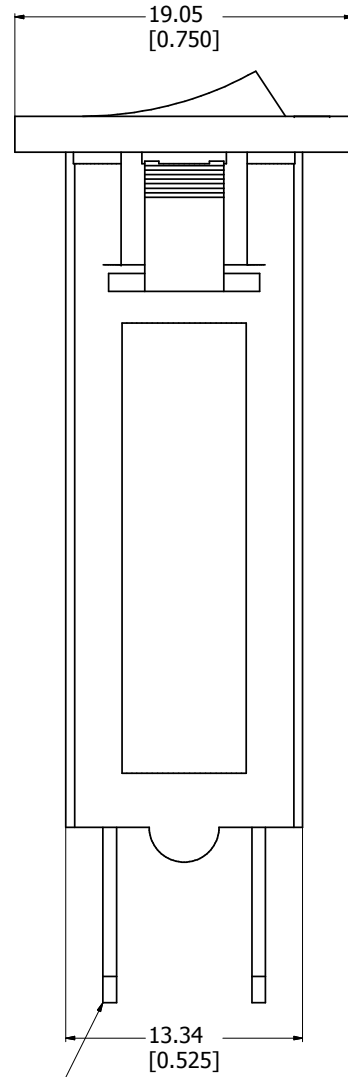
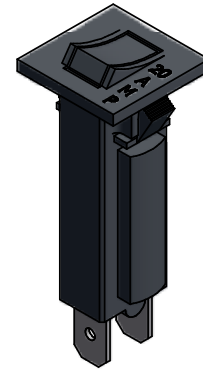


FRONT VIEW

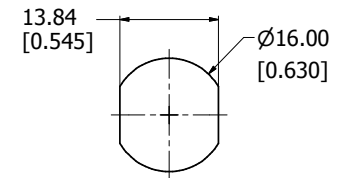


SIDE VIEW

0.032" x 0.250"
QUICK CONNECT TAB
(x2)



ISOMETRIC VIEW



PANEL CUTOUT
(NOT TO SCALE)

1584B20
Rating - 20 Amps, 125 VAC, 50/60 Hz
Material - PBT Plastic 30% Glass Filled (Black)
Recommended Panel Thickness - 0.032" to 0.062"



**HAMMOND
MANUFACTURING™**

1584B20