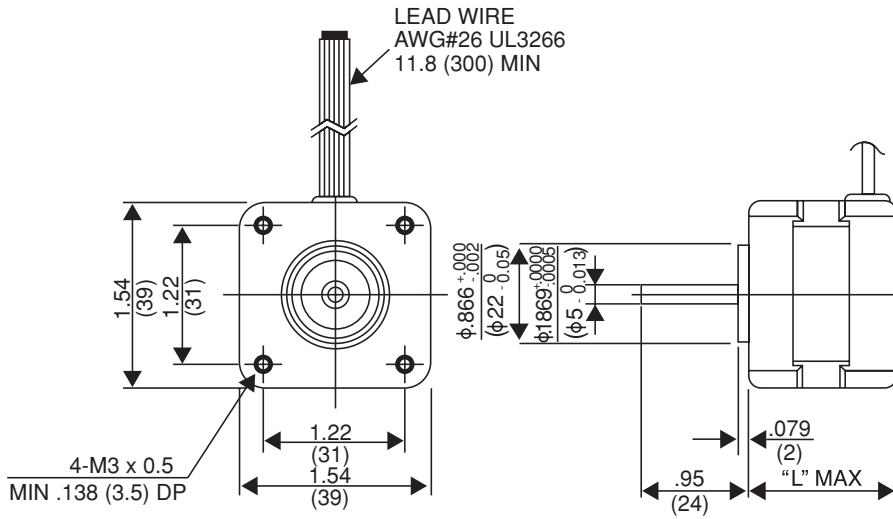
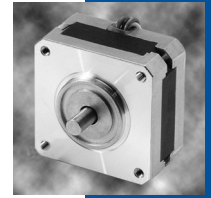


0.9°

16PY-Q

hybrid



UNIT: inch (mm)

P/N	"L"
16PY-Q2XX	1.02 (26)
16PY-Q0XX	1.18 (30)

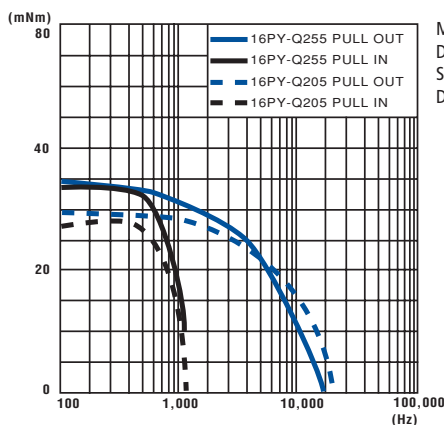
PIN NO. VS PHASE

A	A COM	$\bar{A}$	B	B COM	$\bar{B}$
RED	BLK	YEL	BLU	WHT	ORG

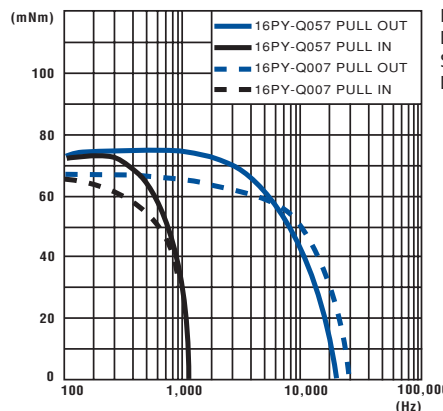
## Model Specifications

Model Number	Step Angle	Drive Sequence	Rated Current/Wdg	Winding Resistance	Holding Torque	Inductance	Rotor Inertia	Detent Torque	Weight
	Degrees		Amps	Ohms	Nm (kg-cm)	mH	kg-cm <sup>2</sup>	Nm (g-cm)	g
16PY-Q205	0.9°	UNIPOLAR	1.0	2.5	0.059 (0.6)	1.0	0.012	0.003 (30)	120
16PY-Q255	0.9°	BIPOLAR	1.0	2.5	0.068 (0.7)	1.4	0.012	0.003 (30)	120
16PY-Q007	0.9°	UNIPOLAR	0.8	4.5	0.078 (0.8)	1.4	0.016	0.005 (50)	170
16PY-Q057	0.9°	BIPOLAR	0.8	4.5	0.093 (.95)	2.0	0.016	0.005 (50)	170

## Torque/Speed Characteristics



Model No.: 16PY-Q205, Q255  
 Driver: Chopper Dual  
 Supply Voltage: 24.0 (Volt)  
 Drive Current: 1.0 (A/WDG)



Model No.: 16PY-Q007, Q057  
 Driver: Chopper Dual  
 Supply Voltage: 24.0 (Volt)  
 Drive Current: 0.8 (A/WDG)

- BI POLAR PULL OUT
- BI POLAR PULL IN
- - - UNI POLAR PULL OUT
- - - UNI POLAR PULL IN