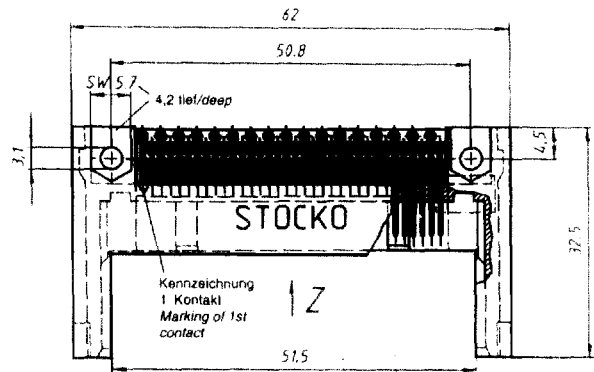
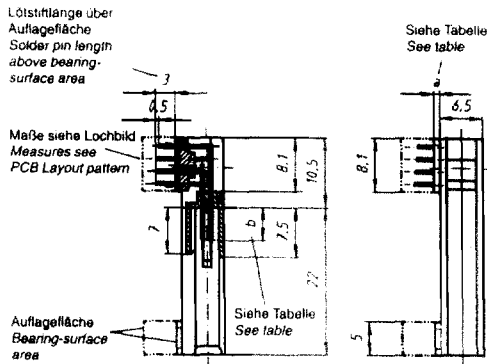


# PC-Card Stecker

## PC-Card Connector

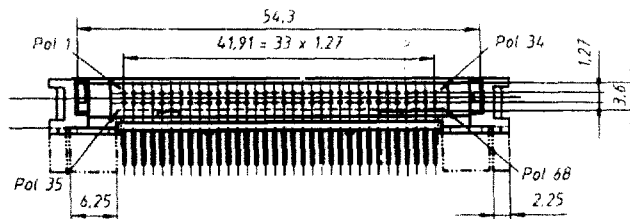
68polig nach PC-Card (PCMCIA) Standard • Kartentyp I, II, III  
 68-way for PC-Card (PCMCIA) Standard • Card types I, II, III



Stiftlängen im Kontaktbereich - Maß b  
 Pin lengths in contact area - Measure b

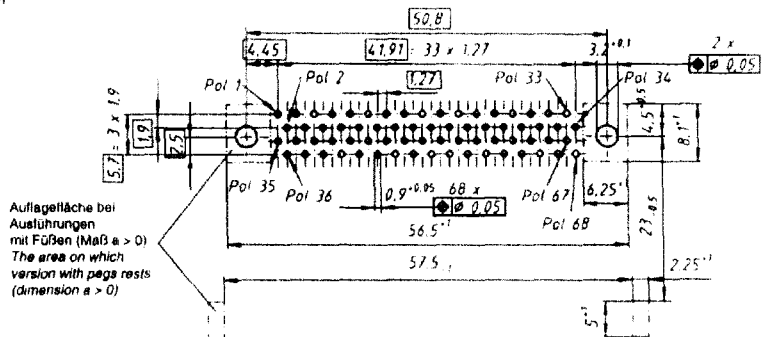
3,5 mm	5,0 mm	4,25 mm
Kontakt-Nr. Contact No.	Kontakt-Nr. Contact No.	Alle anderen Kontaktstifte
36	1	Alle anderen Kontaktstifte
67	17	
	34	
	35	
	51	
	68	Alle anderen Kontaktstifte

Ansicht Z / View Z



Polzahl Positions	Artikel-Nummer Part number	Bauhöhe Height a mm
68	MKF 5068-6-0-6868	0,9
68	MKF 5069-6-0-6868	5,9
68	MKF 5070-6-0-6868	2,9

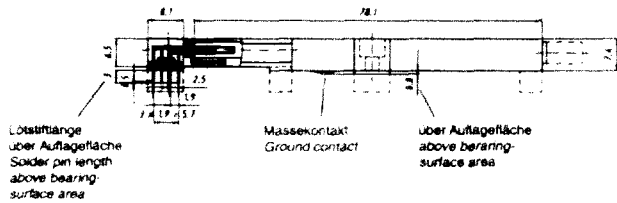
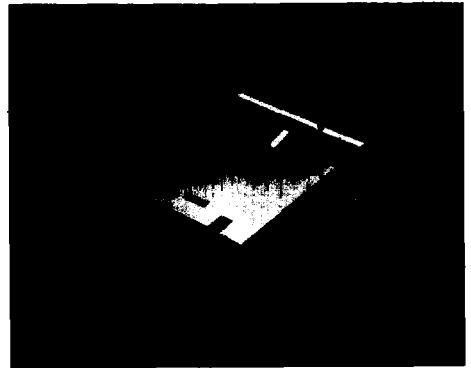
Lochbild Bauteilseite  
 PCB Layout pattern component side



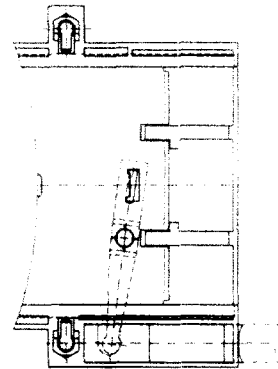
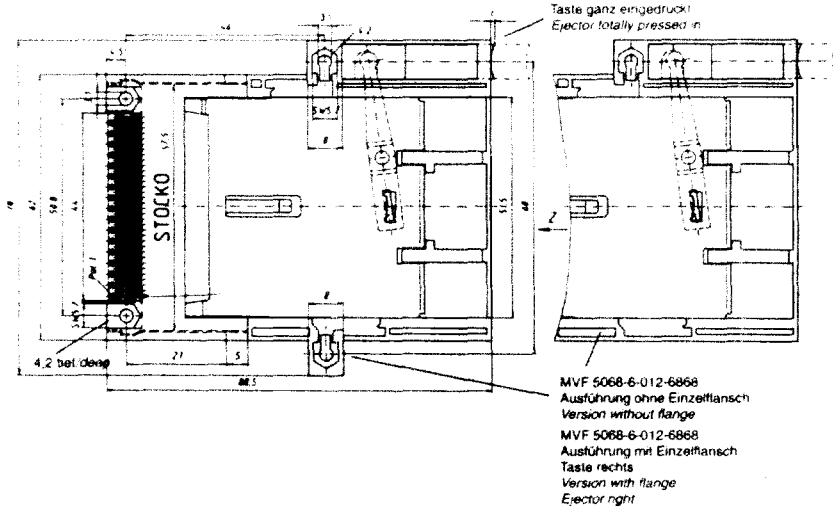
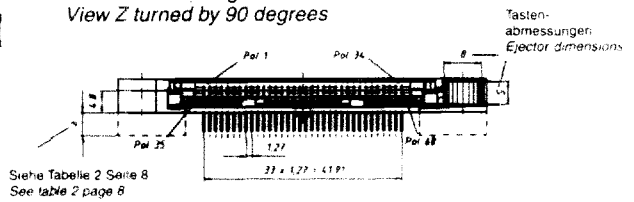
Auflagefläche bei Ausführungen mit Füßen (Maß a > 0)  
 The area on which version with pegs rests (dimension a > 0)

# PC-Card Stecker mit Auswerfer PC-Card Connector with ejector

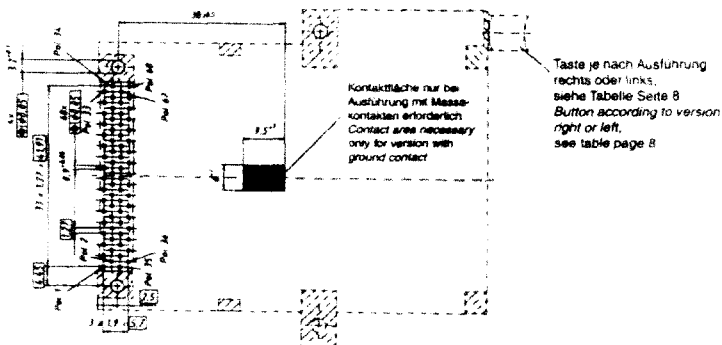
68polig nach PC-Card (PCMCIA) Standard • Kartentyp I, II, III  
68-way for PC-Card (PCMCIA) Standard • Card types I, II, III



Ansicht Z um 90° gedreht  
View Z turned by 90 degrees



Lochbild Bauteilseite  
PCB Layout pattern component side



Stiftlängen im Kontaktbereich:  
Siehe Seite 6

Pin lengths in contact area:  
See page 6

