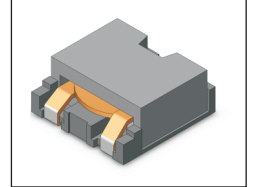


# SMT Power Inductor

## HMU1056L Type

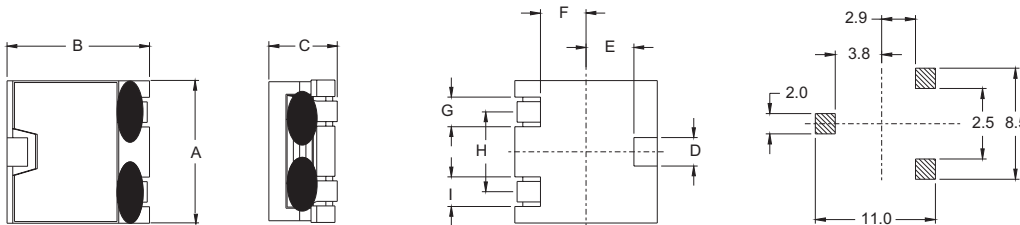
### Features

- RoHS compliant.
- Low profile, SMD type.
- High current.
- Magnetic shielded.
- High energy storage and low DCR.
- Provided with embossed carrier tape packing.
- Ideal for power source circuits, DC-DC converter, DC-AC inverters inductor applications.
- In addition to the standard versions shown here, customized inductors are available to meet your exact requirements.



### Mechanical Dimension :

### RECOMMENDED PAD PATTERNS



UNIT : mm/inch  
 A = 10.40 / 0.409 Max.  
 B = 10.40 / 0.409 Max.  
 C = 5.60 / 0.220 Max.  
 D = 1.40 / 0.055  
 E = 3.80 / 0.150  
 F = 2.90 / 0.114  
 G = 2.60 / 0.102  
 H = 5.50 / 0.217  
 I = 2.60 / 0.102

### Electrical Characteristics : At 25°C : 100KHz, 1V

PART NO.	L <sup>1</sup> ( $\mu$ H)	DCR (m $\Omega$ ) MAX	I <sub>RATED</sub> <sup>2</sup> (A <sub>dc</sub> )
HMU1056L-R36	0.36	1.7	24.0
HMU1056L-OR8	0.80	2.4	16.0
HMU1056L-1R4	1.40	4.1	12.0
HMU1056L-2R2	2.20	5.3	9.6
HMU1056L-3R2	3.20	7.5	7.8
HMU1056L-4R3	4.30	10.5	6.8
HMU1056L-5R7	5.70	12.4	5.8
HMU1056L-7R2	7.20	18.0	5.3
HMU1056L-8R8	8.80	23.8	4.8

1. Tolerance of inductance : 0.36 $\mu$ H  $\pm$  30%    0.80~8.80 $\mu$ H  $\pm$  20%
2. I<sub>RATED</sub> is the DC current which cause the inductance drop less than 35% (20% typical) of its nominal inductance without current and the surface temperature of the part increase less than 45°C.
3. Operating temperature : -20°C to 105°C ( including self-temperature rise ).



**DELTA ELECTRONICS, INC.**

(TAOYUAN PLANT CPBG) 252, SAN YING ROAD, KUEISAN INDUSTRIAL ZONE, TAOYUAN SHIEN, 333, TAIWAN, R.O.C.  
 TEL: 886-3-3591968; FAX: 886-3-3591991  
<http://www.deltaww.com>