

C8017NL

- FILTER MODULE
- 1125-1525 MHz
- IMPEDANCE = 75 OHMS
- SURGE 3KV, 120A, 100/1000uS
- THROUGH HOLE
- METAL CAN WITH F-CONNECTOR PORT
- DESIGNED FOR MOCA APPLICATIONS

NOTES: UNLESS OTHERWISE SPECIFIED

1. METAL HOUSING, SPTe
2. F-TYPE CONNECTOR
3. OPERATING TEMPERATURE: 0°C TO +70°C
4. JEDEC MOISTURE: LEVEL 1.
5. DIMENSIONS ARE IN MM WITH THE FOLLOWING TOLERANCE:
.XX= ±.25
.XXX= ±.13
6. ROHS COMPLIANT



ELECTRICAL SPECIFICATIONS: Ⓢ 25°C

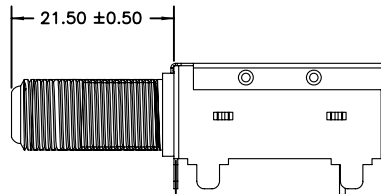
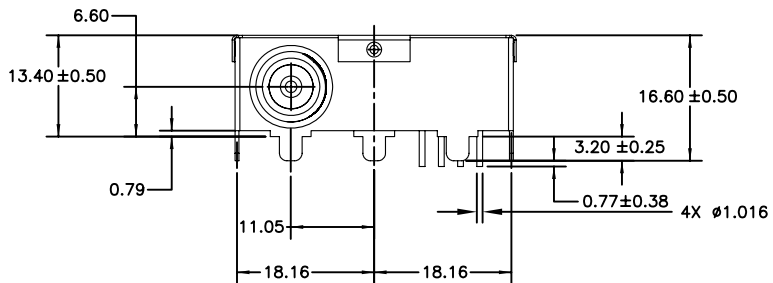
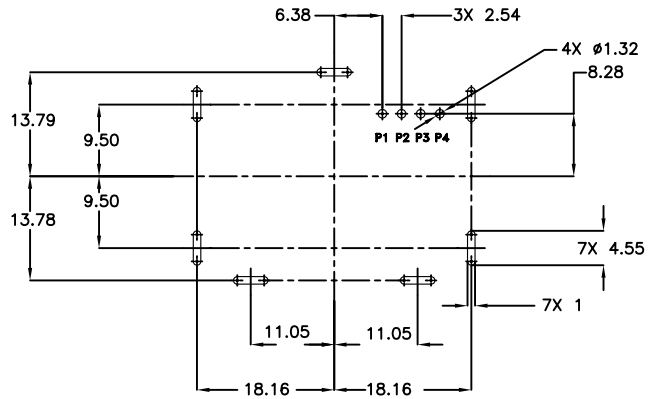
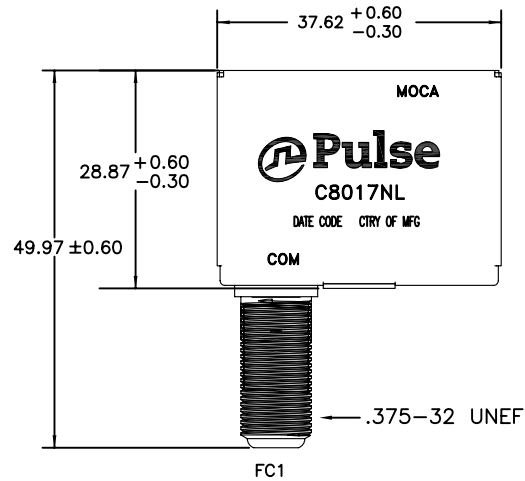
INSERTION LOSS: COMMON TO MOCA

FREQUENCY	
5-600 MHz	-40 dB MIN
601-1025 MHz	-38 dB MIN
1125-1525 MHz	-3.0 dB MAX
2300 MHz	-41 dB MIN
3000 MHz	-31 dB MIN
4600 MHz	-25 dB MIN
6000 MHz	-5.0 dB MIN

RETURN LOSS: COMMON PORT

FREQUENCY	
1125-1525 MHz	-10 dB MIN

MECHANICAL SPECIFICATIONS:



DESIGNATIONS	
COMMON PORT (COM)	FC1
MOCA	PIN 1
GROUND (GND)	PINS 2, 3, 4

© Copyright, 2011. Pulse Engineering, Inc. All rights reserved. Drawing specifications subject to change without notice. Date (04/21/11)

PULSE CONFIDENTIAL
&
PROPRIETARY

PRODUCT SPECIFICATION:
FLTR, MDL, 1125-1525 MHz, 1FC, TH

DWG. NO./ PART NO.	SHEET:	REV.
C8017NL	2	M11