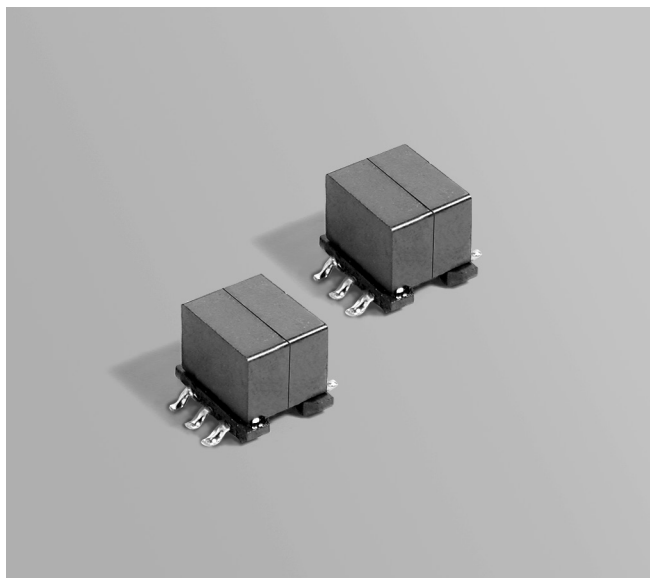




Flyback Transformers

For STMicroelectronics
POTS interface



- Developed for the ST Micro STL3075 and STL3085 Integrated POTS interfaces for home access gateway and WLL.
- Provides negative voltage (-46 V typical) to operate the microchip

Core material Ferrite

Interwinding isolation 1500 Vdc

Terminations RoHS tin-silver over tin over nickel over phos bronze. Other terminations available at additional cost.

Weight 1.9 – 2.1 g

Ambient temperature -40°C to +85°C

Storage temperature Component: -40°C to +85°C.
Tape and reel packaging: -40°C to +80°C

Resistance to soldering heat Max three 40 second reflows at +260°C, parts cooled to room temperature between cycles

Moisture Sensitivity Level (MSL) 1 (unlimited floor life at <30°C / 85% relative humidity)

Failures in Time (FIT) / Mean Time Between Failures (MTBF)

38 per billion hours / 26,315,789 hours, calculated per Telcordia SR-332

Packaging 450 per 13" reel Plastic tape: 24 mm wide, 0.45 mm thick, 16 mm pocket spacing, 9.04 mm pocket depth

PCB washing Only pure water or alcohol recommended

Part number ¹	Inductance at 0 A ² ±8% (µH)	Inductance at I _{pk} ³ min (µH)	DCR max (Ohms)		Leakage inductance ⁴ max (µH)	Turns ratio pri : sec	I _{pk} ³ (A)	Input voltage (V)
			pri	sec				
FA2469-AL_	19	14.86	0.036	16.5	0.414	1 : 16	1.5	4.5 – 8.5
FA2470-AL_	19	14.86	0.036	7.92	0.400	1 : 8	1.5	8.5 – 12.0

1. When ordering, please specify **packaging** code:

FA2470-ALD

Packaging: D = 13" machine-ready reel. EIA-481 embossed plastic tape (350 parts per full reel).

B = Less than full reel. In tape, but not machine ready. To have a leader and trailer added (\$25 charge), use code letter D instead.

2. Inductance is for the primary, measured at 10 kHz, 0.1 Vrms, 0 Adc.

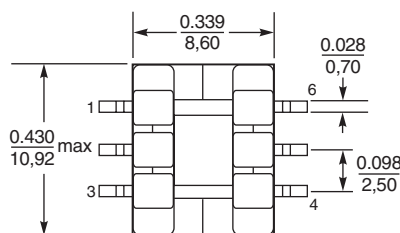
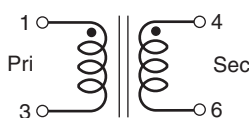
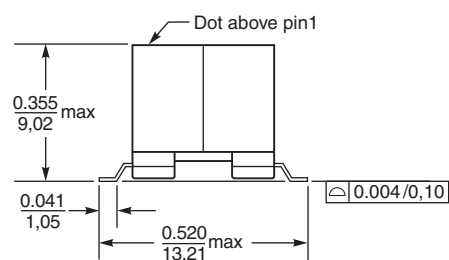
3. I_{pk} is peak primary current drawn at minimum input voltage.

4. Leakage inductance measured between pins 1 and 3 with pins 4 and 6 shorted.

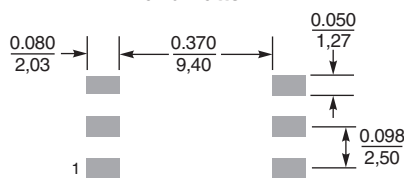
5. Operating temperature range -40°C to +85°C.

6. Electrical specifications at 25°C.

Refer to Doc 362 "Soldering Surface Mount Components" before soldering.



Recommended Land Pattern



Dimensions are in $\frac{\text{inches}}{\text{mm}}$



www.coilcraft.com

US +1-847-639-6400 sales@coilcraft.com

UK +44-1236-730595 sales@coilcraft-europe.com

Taiwan +886-2-2264 3646 sales@coilcraft.com.tw

China +86-21-6218 8074 sales@coilcraft.com.cn

Singapore +65-6484 8412 sales@coilcraft.com.sg

Document 601 Revised 03/07/07

© Coilcraft Inc. 2013

This product may not be used in medical or high risk applications without prior Coilcraft approval. Specification subject to change without notice. Please check web site for latest information.