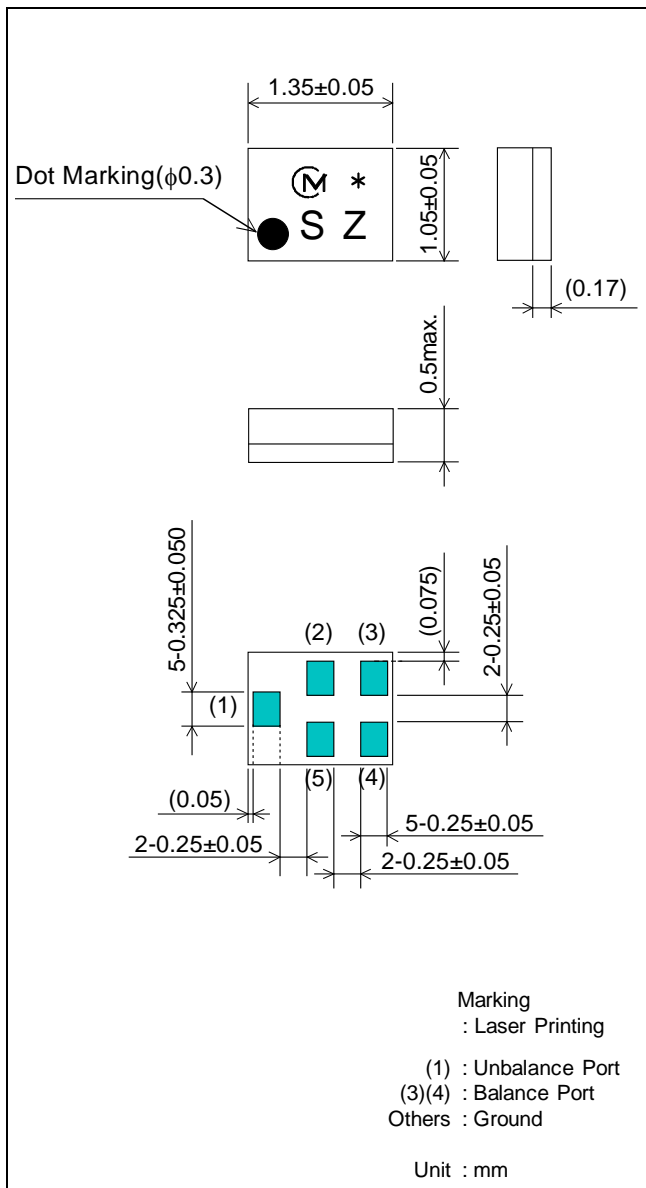


# SAW FILTER FOR GSM1800(Rx)

Murata part number : SAFEA1G84FA0F00

## Package Dimensions

## Specification

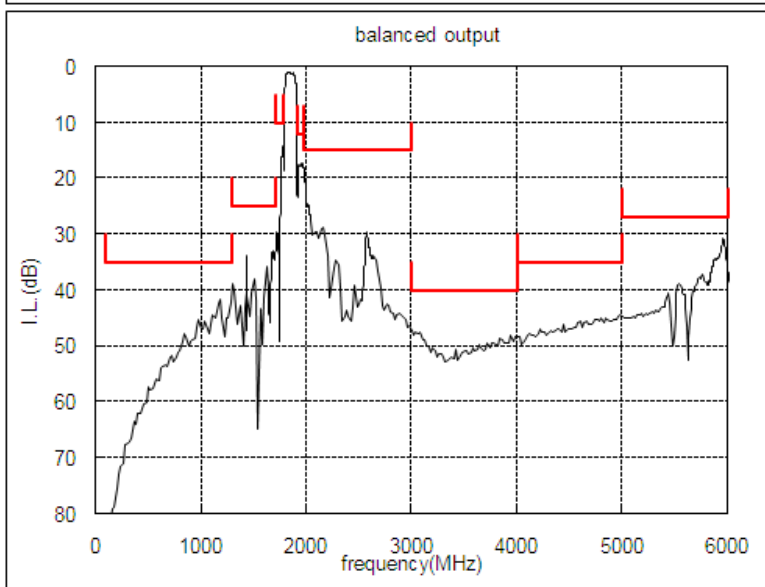
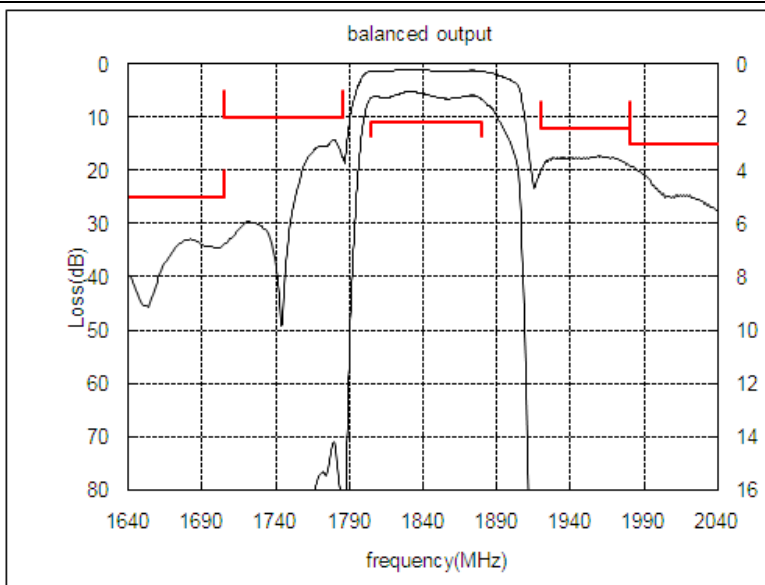


Item	Specification		
	-30 to 85°C	25±2°C	typ.
Nominal Center Frequency(fc)	1842.5MHz		
Insertion Loss (1805 to 1880MHz)	2.2dB max.	1.7dB max.	1.4 dB
Absolute Attenuation			
1) 100 to 1300 MHz	35 dB min.	35 dB min.	39 dB
2) 1300 to 1705 MHz	25 dB min.	25 dB min.	33 dB
3) 1705 to 1785 MHz	10 dB min.	13 dB min.	17 dB
4) 1920 to 1980 MHz	12 dB min.	15 dB min.	17 dB
5) 1980 to 3000 MHz	15 dB min.	15 dB min.	18 dB
6) 3000 to 4000 MHz	40 dB min.	40 dB min.	46 dB
7) 4000 to 5000 MHz	35 dB min.	35 dB min.	42 dB
8) 5000 to 6000 MHz	27 dB min.	27 dB min.	30 dB
Ripple Deviation (1805 to 1880MHz)	1.5dB max.	1.0dB max.	0.3 dB
VSWR (1805 to 1880MHz)	2.1 max.	1.9 max.	1.6
Amplitude Balance (1805 to 1880MHz)	±1.5dB max.	±1.2dB max.	±0.7dB
Phase Balance (1805 to 1880MHz)	180±12deg. max.	180±10deg. max.	180+3deg.
Unbalance Port Matching Impedance (nominal)	50Ω		
Balance Port Matching Impedance (nominal)	150Ω//18nH		
Input Signal Level	20mW(+13dBm),2000 hours		

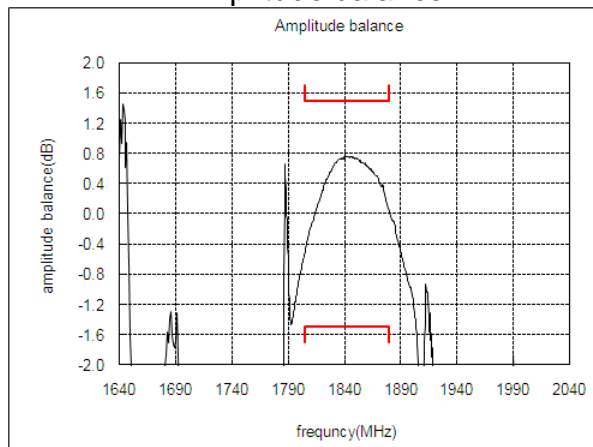
# SAW FILTER FOR GSM1800(Rx)

Murata part number : SAFEA1G84FA0F00

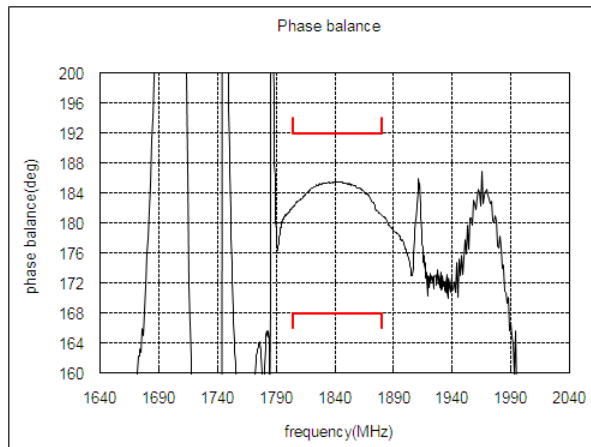
## Frequency Performance



### Amplitude balance



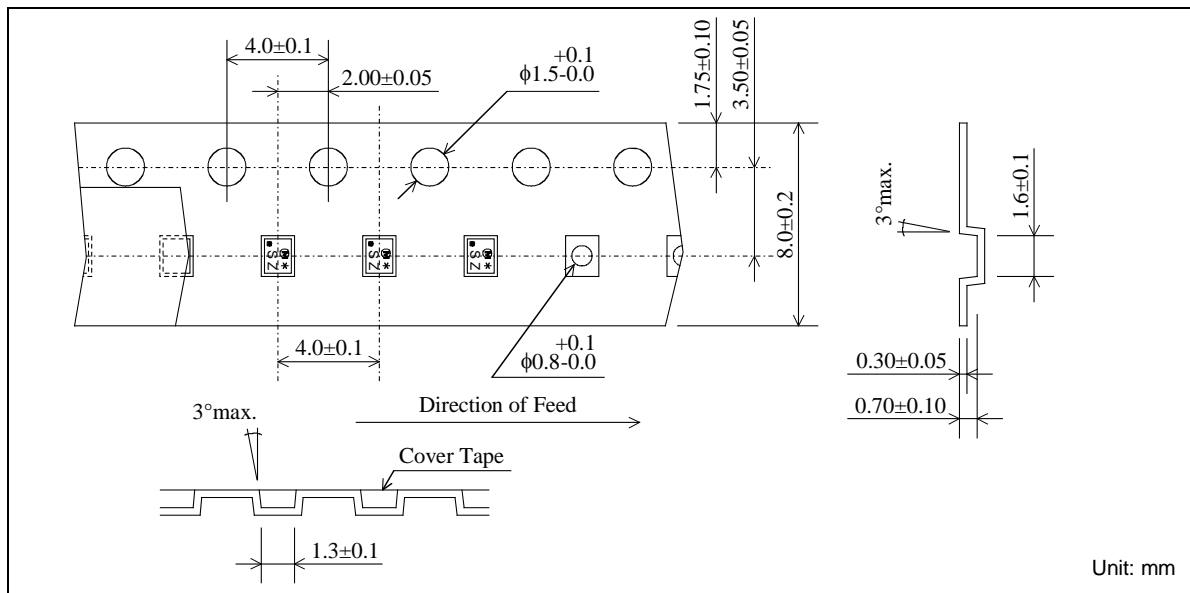
### Phase balance



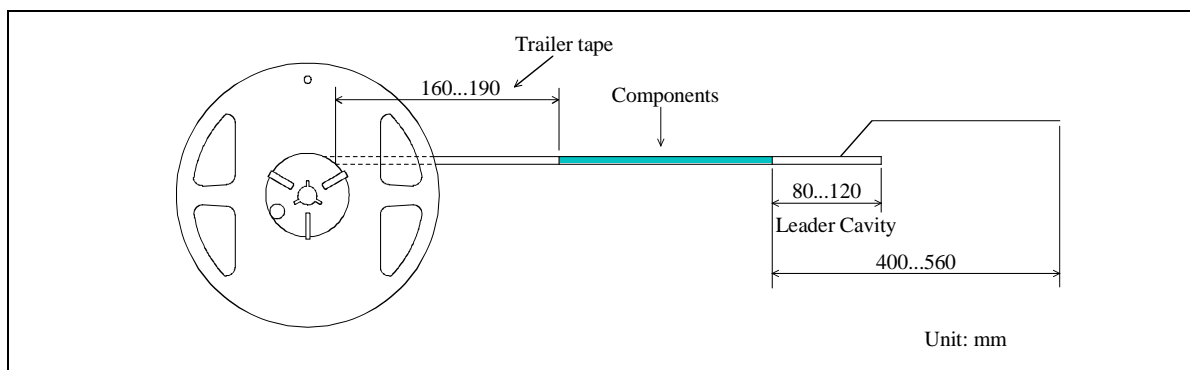
# SAW FILTER FOR GSM1800(Rx)

Murata part number : SAFEA1G84FA0F00

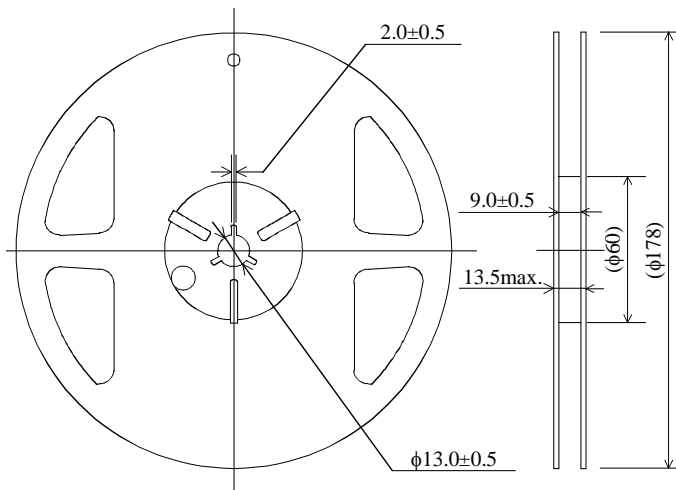
## Dimensions of Carrier Tape



## Dimensions of Tape



## Dimensions of Reel

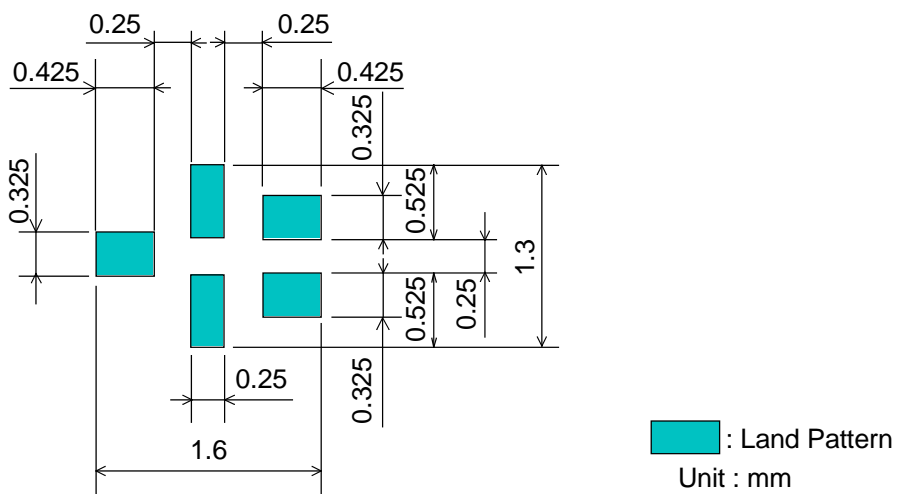


SAFEA1G84FA0F00R14 ... 4000pcs/reel

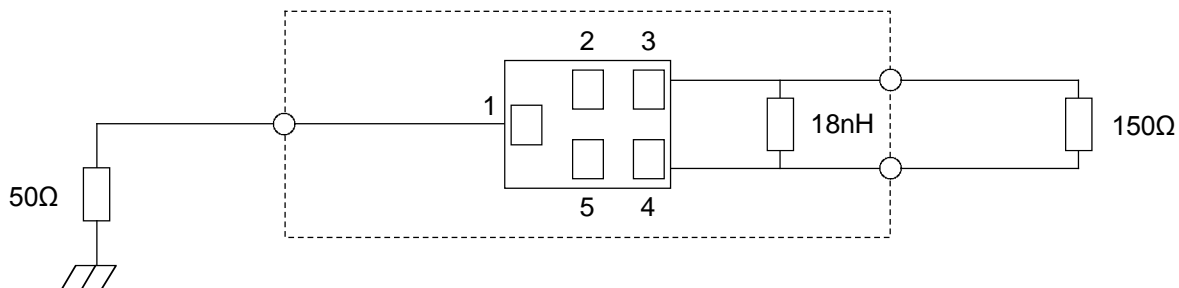
# SAW FILTER FOR GSM1800(Rx)

Murata part number : SAFEA1G84FA0F00

## Recommended Land Pattern



## Test Circuit



# SAW FILTER FOR GSM1800(Rx)

Murata part number : SAFEA1G84FA0F00

## ■ RoHS Compliance

This component is compliant with RoHS directive.

This component was always RoHS compliant from the first date of manufacture.

### • Caution - Limitation of Applications

Please contact us before using our products for the applications listed below which require especially for the prevention of defects which might directly cause damage to the third party's life, body or property.

- a. Aircraft equipment
- b. Aerospace equipment
- c. Undersea equipment
- d. Nuclear control equipment
- e. Medical equipment
- f. Transportation equipment (vehicles, trains, ships, etc.)
- g. Traffic signal equipment
- h. Disaster prevention / crime prevention equipment
- i. Data - processing equipment
- j. Application of similar complexity and / or reliability requirements to the applications listed in the above

• This PDF Datasheet is downloaded from the website of Murata Manufacturing Co., Ltd. Therefore, it's specifications are subject to change or our products in it may be discontinued without advance notice. Please check with our sales representatives or product engineers before ordering.

• This PDF Datasheet has only typical specifications because there is no space for detailed specifications. Therefore, please approve our product specifications or transact the approval sheet for product specifications before ordering.