

Subminiature Fuse, 3.8 x 10 mm, Time-Lag T, 125 VAC, 125 VDC



UL 248-14 · 125VAC · 125VDC · Time-Lag T



**Description**

- Low Breaking Capacity

**Standards**

- UL 248-14  
- CSA C22.2 no. 248.14

**Approvals**

- UL File Number: E42088

**References**

[General Product Information](#)  
[Packaging Details](#)

**Weblinks**

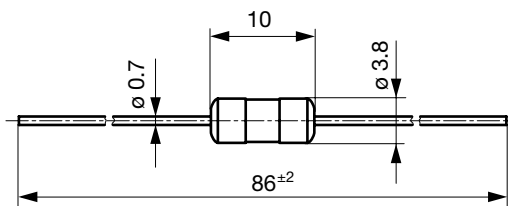
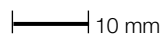
[Approvals, RoHS, CHINA-RoHS, e-Store, Distributor-Stock-Check, Accessories, Product Change Notification \(PCN\)](#)

**Technical Data**

Rated Voltage	65 - 125 VAC, 65 - 125 VDC
Rated Current	0.125 - 10 A
Breaking Capacity	50 A - 100 A
Characteristic	Time-Lag T
Admissible Ambient Air Temp.	-40 °C to 85 °C
Climatic Category	40/085/56 acc. to IEC 60068-1
Material: Tube	Ceramic
Material: Axial Leads	Tin-Plated Copper
Unit Weight	0.6 g
Storage Conditions	0 °C to 60 °C, max. 70% r.h.
Product Marking	☐, Current, Characteristic

Soldering Methods	Wave
Solderability	235 °C / 2 sec acc. to IEC 60068-2-20, Test Ta, method 1
Resistance to Soldering Heat	260 °C / 5 sec acc. to IEC 60068-2-20, Test Tb, method 1A

**Dimensions**




**Pre-Arcing Time**

Rated Current In 1.0 x In min. 2.0 x In min. 2.0 x In max. 3.0 x In min. 3.0 x In max. 8.0 x In min. 8.0 x In max.

0.125 A - 10 A	4 h	1 s	120 s	200 ms	3 s	20 ms	100 ms
----------------	-----	-----	-------	--------	-----	-------	--------

### Variants

Rated Current [A]	Rated Voltage [VAC]	Rated Voltage [VDC]	Breaking Capacity	Voltage Drop 1.0 In typ. [mV]	Melting I <sup>2</sup> t 10.0 Intyp. [A <sup>2</sup> s]		Order Number
0.125	125	125	1)	1200	0.024	●	7010.1607.xx
0.16	125	125	1)	900	0.038	●	7010.1608.xx
0.2	125	125	1)	480	0.092	●	7010.1609.xx
0.25	125	125	1)	320	0.13	●	7010.1610.xx
0.315	125	125	1)	190	0.16	●	7010.1611.xx
0.4	125	125	1)	170	0.2	●	7010.1612.xx
0.5	125	125	1)	155	0.4	●	7010.1613.xx
0.63	125	125	1)	140	0.64	●	7010.1614.xx
0.8	125	125	1)	110	1.3	●	7010.1615.xx
1	125	125	1)	110	2.1	●	7010.1616.xx
1.25	125	125	1)	90	3.7	●	7010.1617.xx
1.6	125	125	1)	80	4.4	●	7010.1618.xx
2	125	125	1)	80	7.2	●	7010.1619.xx
2.5	125	125	1)	75	13.5	●	7010.1620.xx
3.15	125	125	1)	75	22	●	7010.1621.xx
4	125	125	1)	75	37	●	7010.1622.xx
5	125	125	1)	75	60	●	7010.1623.xx
6.3	125	125	1)	70	94	●	7010.1624.xx
8	65	65	2)	70	175	●	7010.1625.xx
10	65	65	2)	70	260	●	7010.1626.xx

1) 50 A @ 125 VAC/DC

2) 100 A @ 65 VAC/DC

### Packaging Unit

.xx = .12 Plastic Bag (50 pcs.)

.xx = .46 Taped 19 cm Reel (1000 pcs.)

### Time-Current-Curves

