

**RC5000Y Series**

Inquiry

Ling core:High permeability



**Application**

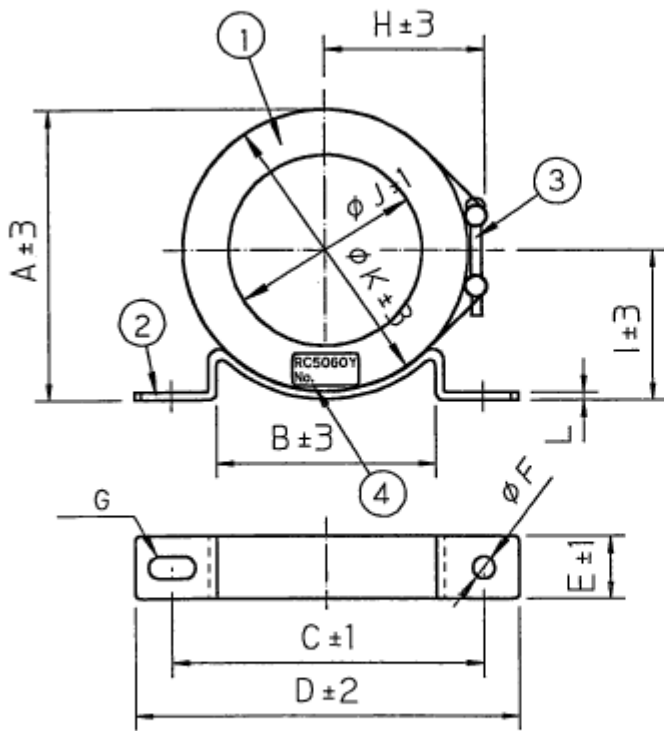
Signal line/swiching power supply/inverter etc.

**Specifications**

| Measurement temperature 23+/-2Deg.C |          |               |    |     |     |    |       |          |    |    |    |     |     |
|-------------------------------------|----------|---------------|----|-----|-----|----|-------|----------|----|----|----|-----|-----|
| Type                                | 1KHz(uH) | Dimension(mm) |    |     |     |    |       |          |    |    |    |     |     |
|                                     |          | A             | B  | C   | D   | E  | F     | G        | H  | I  | J  | K   | L   |
| RC5045Y                             | 39-73    | 54            | 32 | 75  | 90  | 16 | dia.5 | R2.5 L10 | 32 | 30 | 31 | 49  | 1.6 |
| RC5060Y                             | 42-78    | 70            | 45 | 95  | 115 | 19 | dia.5 | R2.5 L10 | 40 | 38 | 41 | 64  | 1.6 |
| RC5075Y                             | 45-85    | 85            | 63 | 130 | 150 | 23 | dia.7 | R3.5 L15 | 48 | 46 | 51 | 79  | 3   |
| RC5100Y                             | 33-61    | 114           | 85 | 140 | 160 | 25 | dia.7 | R3.5 L15 | 62 | 62 | 76 | 104 | 3   |

Note:Measured by YHP manufactured multi-frequency LCR meter 4284A or equivalent.  
Condition for the measurement f=1KHz, 1T 10mA through.

**Fig**



| NO | 名称        |
|----|-----------|
| 1  | アモルファス系コア |
| 2  | コアバンド     |
| 3  | ネジ        |
| 4  | 銘板        |

<銘板仕様> (表示例 RC3060Y)

|              |        |
|--------------|--------|
| TYPE RC5060Y | 品名     |
| No. _____    | ロットNo. |