



DC POWER CONNECTORS: KLDX Series

PCB Mount DC Power Jack

Product Features

- 1.0mm and 1.3mm
- Built-In DC On/Off Switch
- Laptop and Palm Computers, Portable Modems, Radar Detectors, and Other Portable Device Applications
- CSA/NRTL Certified File No. LR78160

Performance Specifications

Materials and Finish

- Plastic Housing:** PBT, UL94V-0 Rated, Black Color
- Center Pin:** Copper Alloy, Nickel Plated
- Contact #1 and #3:** Brass Tin, Plated
- Contact #2:** Phosphor Bronze, Tin Plated

Electrical Characteristics

Contact Resistance

- Before Durability Test**
- Between Terminals:** 30 milliohms Max.
- Plug to Contacts:** 50 milliohms Max.

After Durability Test

- Between Terminals:** 60 milliohms Max.
- Plug to Contacts:** 100 milliohms Max.

Rated Voltage: 24V DC

Rated Current: See Drawing

Insulation Resistance: 100 Megohms Min. at 500V DC

Dielectric Withstanding Voltage: 500V AC RMS for 1 Minute

Mechanical Characteristics

- Durability Test:** 5000 Cycles
- Insertion Force:** 0.3kg - 2.5kg
- Extraction Force:** 0.3kg - 2.5kg
- Operating Temperature:** -25°C to +85°C

| | | | |
|-----------------------|---------------------|----------------------|------------------|
| 2D Drawing | IGES | STEP | 3D PDF |
| Solder Profile | CofC RoHS Compliant | CofC REACH Compliant | UL Plastic File |
| Certificate of Origin | Check Stock | Request a Sample | Send Us An Email |

Generated Part Number

Part Number Builder

| | | | | |
|--------|---|----------|---|------------|
| | - | | - | |
| Series | | Diameter | | Lead Style |

Series

KLDX-0201 - PCB Mount Mini DC Power Jack

Diameter

- A** - 1.0mm Center Pin Diameter
- B** - 1.3mm Center Pin Diameter

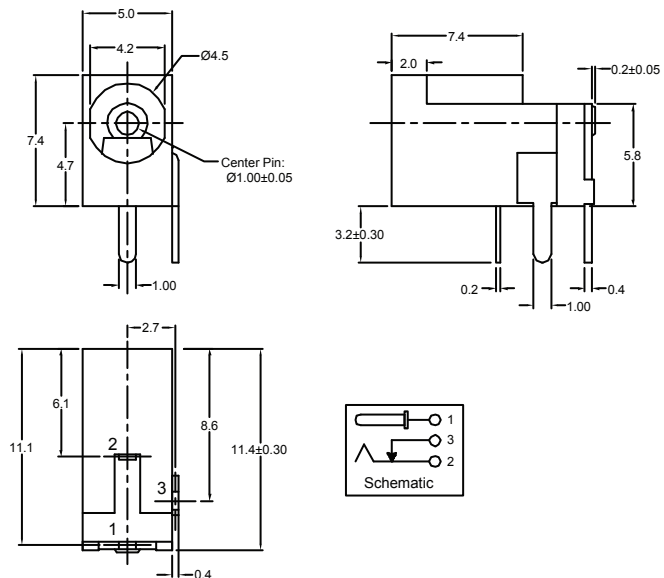
Lead Style

- Blank** - Standard Straight
- C** - Crimped

Contact Kycon for Other Options

KLDX-0201 Series

Dimensions in mm



Mouser Electronics

Authorized Distributor

Click to View Pricing, Inventory, Delivery & Lifecycle Information:

[Kycon:](#)

[KLDX-0201-B](#) [KLDX-0201-A](#) [KLDX-0201-BHT-TR](#) [KLDX-0201-AHT](#) [KLDX-0201-AC](#) [KLDX-0201-BC](#) [KLDX-0201-BHT](#)