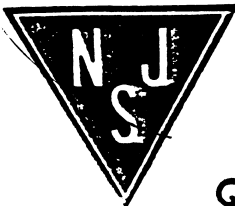
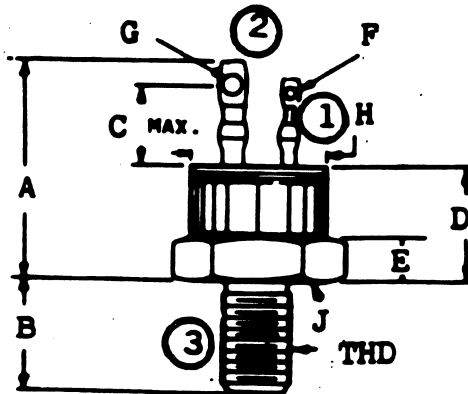


2N5446

TRIAC, V(DRM) = 600 V TO 699.9 V

Description: Triac, V(DRM) = 600 V to 699.9 V

V(drm) Max.....	600
It(rms) Max. (A).....	20
@Temp. (test).....	100#
Supp Curr. I(TSM).....	300%
Firing Char-Igt Max.....	240
Firing Char-Vgt Max.....	3.
Id(off) Max. (A).....	4.0m
@Temp. (test).....	110u
I(h) Max. (A).....	100
V(T) Max.....	1.8
@It (A).....	56
Dv/Dt Worst Static.....	20%
Dv/Dt Worst Case.....	5.0%
t(gt) Typ. (S).....	1.0u
@It (A).....	56
Oper. Temp (x C) Min.....	-60
Oper. Temp (x C) Max.....	110u
Pkg Style.....	StR-1/4



Quality Semi-Conductors

	A	B	C	D	E	F	G	H	J	THD
SC18	.950	.452	.350	.502	.210	.040	.070	.510	.557	1/4-28UNF-2A
SC18a	.950	.438		.535		.060	.090	.525	.580	1/4-28UNF-2A
SC18b	1.19	.437		.418	.158	.063	.145	.544	.582	1/4-28UNF-2A
SC18c	1.16	.432	.538	.478	.088	.038	.145	.505		1/4-28UNF-2A
	MAX	.442		MAX	.098		.160			
SC18d	.950	.420		.520	.195	.045	.085	.487	.490	10-32UNF-2A
	MAX	.464		MAX	.205	.055	.075	.500	.510	
SC18e	1.16	.550	.197	.629	.177	.061				NS
SC18f	.950	.452	.393	.492	.177	.043	.066	.499	.551	NS
SC18g	.950	.422		.330	.113	.088	.080	.544		1/4-28UNF-2A
	MAX	.453		.505	.209	.068	.090	MAX		
SC18h	.950	.420		.538		.088	.080	.501		1/4-28UNF
	MAX	.485		MAX		.088	.095	.505		
SC18j	.944	.422	.350	.478	.088	.038	.045			1/4-28UNF-2A
	MAX	.442	MAX	MAX	.098	.048	.075			
SC18k	.891	.422		.460	.100	.040	.040	.525	.544	1/4-28UNF-2A
	MAX	.482		.525	.225	.075	.075	MAX	.582	
SC18m	.950	.452								1/4-28UNF-2A
SC18n	.950	.420						.551		
	MAX	.455						.559		
SC18p	.950	.420						.551		
	MAX	.455						.559		
SC18q	.950	.422		.330	.113	.088	.138	.544		1/4-28UNF-2A
	1.10	.453		.505	.209	.068	.148	MAX		
SC18r	.944	.417		.482	.482	.031	.055			1/4-28UNF-2A
	MAX	.456		.531	.531	.047	.070			
SC18s	.950	.420				.088	.080	.501		1/4-28UNF
	MAX	.455				.088	.095	.505		
SC18t	.888	.422	.350	.478	.088	.040	.081			1/4-28UNF-2A
	MAX	.442	MAX	MAX	.098	.048	.089			
SC18u	1.16	.432	.538	.478	.088	.040	.145	.505		1/4-28UNF-2A
	MAX	.442		MAX	.098	.048	.160			
SC18v	1.183	.422		.523		.088	.080	.544	.545	1/4-28UNF-2A
	MAX	.453		MAX		.088	.165	MAX	.582	
SC18w	.875	.437		.480	.150	.062	.062		.562	1/4-28
	MAX			MAX	MAX					