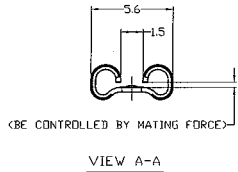
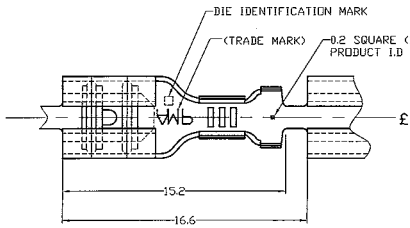


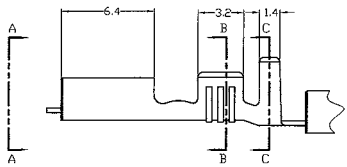
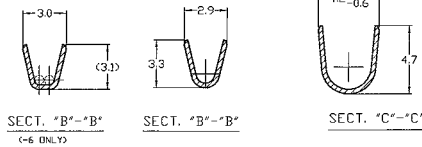
THIS DRAWING IS UNPUBLISHED. RELEASED FOR PUBLICATION  
COPYRIGHT BY TYCO ELECTRONICS CORPORATION. ALL RIGHTS RESERVED.

LOC	DIST	REVISIONS					
J	-	P	LR	DESCRIPTION	DATE	DRW	APVD
		H		REDRAWN W/C FJDO-0305-04	31AUG'04	H.L.	M.S
		J		REVISED FJDO-0344-04	25SEP'04	H.L.	M.S
		J1		REVISED ECR-05-007890	29JUL 05	Y.Y.	N.Y



NOTE:  
1. SEE DRAWING OF CP63-046J FOR THE DETAIL OF MATING TAB

2. STRESS RELIEVING  
FINISH IS SUBJECT TO CHANGE BY THE TYPE OF STRESS RELIEVING PROCESS  
\* INERT GAS FURNACE ..... MATTE  
\* ATMOSPHERIC FURNACE FOLLOWING BY ACID PICKLE... BRIGHT



PRODUCT SPEC NO.	LP P/N	MATERIAL	FINISH	P/N
108-5178	---	BRASS 0.32t	ELECTRICAL TIN PLATED WITHOUT STRESS RELIEVE	170037-9
108-5178	---	BRASS 0.32t	ELECTRICAL TIN PLATED	170037-6
108-5178	170038-5	PRE-TIN BRASS		170037-5
108-5178	170038-4	PHOSBRD 0.32t	ELECTRICAL TIN PLATED	170037-4
108-5178	170038-3	PHOSBRD 0.32t		170037-3
108-5178	170038-2	BRASS 0.32t	ELECTRICAL TIN PLATED	170037-2
108-5008	170038-1	BRASS 0.32t		170037-1

WIRE RANGE 0.5-1.42 PLT (AWG #20-#16)	THIS DRAWING IS A CONTROLLED DOCUMENT.		DRW LI HELEN	27AUG2004	Tyco Electronics AMP K.K. Kawasaki, Japan
	DIMENSIONS: 単位: 寸 mm	TOLERANCES UNLESS OTHERWISE SPECIFIED 一般公差	CHK Mikio Shindo	30 Aug. 04	
INSULATION DIA 2.29-3.3		0 PLC ± 1 PLC ± 2 PLC ± 3 PLC ± 4 PRC ± ANGLES ±	PRODUCT SPEC 108-5008	SIZE A3	187 SERIES FASTON RECEPTACLE DRAWING NO. 170037
TOLERANCES ±0.4			MATERIAL SEE TABLE	FINISH SEE TABLE	
			WEIGHT 0.35g/ea	DRAWING NO. 170037	RESTRICTED TO
			CUSTOMER DRAWING		SHEET 1 OF 1 REV J1