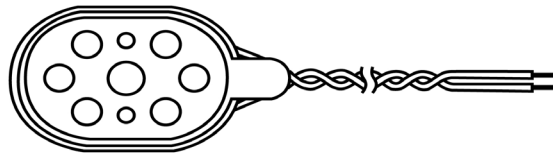
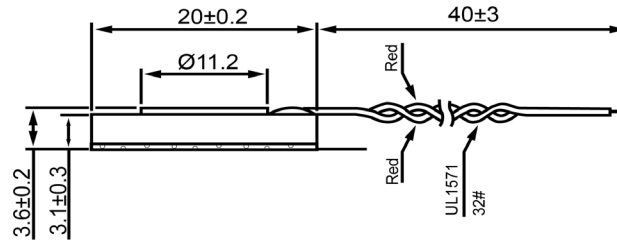


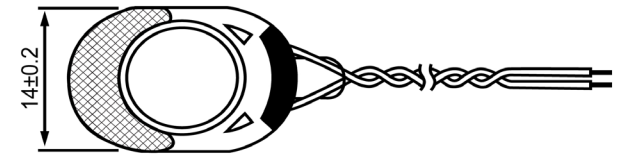
TOP VIEW





SIDE VIEW



BOTTOM VIEW



Specifications			Notes	Revision History					
Description	Value	Unit		Version	Description	Date	Approved		
Shape	Oval		1) All dimensions are in mm unless otherwise noted 2) All parts meet RoHS	1	Released from Engineering	2/5/2014	J.S.		
Resonant Frequency	850	(Hz)							
Frequency Range	850 ~ 20,000	(Hz)							
SPL @ 10cm	90	(dBA)							
Impedance	8	(Ohm)							
Cone Material	Polyethylene Naphthalate								
Nominal Power	0.8	(W)							
Max Power	1.0	(W)							
Mount Type	Flush Mount								
Operating Temperature	-40 ~ +60	°C							
Storage Temperature	-40 ~ +60	°C							
Weight	1.6	(g)							
 DB UNLIMITED			 DB UNLIMITED			Dynamic Speaker		SM200808-2	
						Drawn by G.W.	Date 1/27/2014	Checked by C.E.	Date 1/29/2014