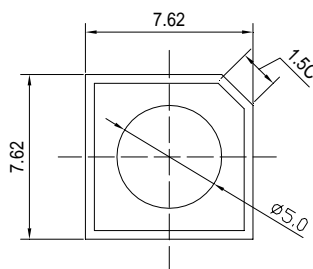


**■Features**

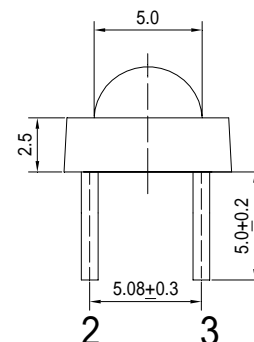
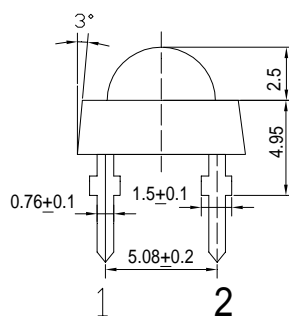
- High Luminous Super Flux Output
- 5 ° Standard Directivity
- Long Lifetime Operation (Up to 100,000hours)
- Superior Weather-resistance
- UV Resistant Epoxy
- Water Clear Type

**■Applications**

- Automotive Dashboard Lighting
- Small Area Illuminations
- Back Lighting
- Other Lighting

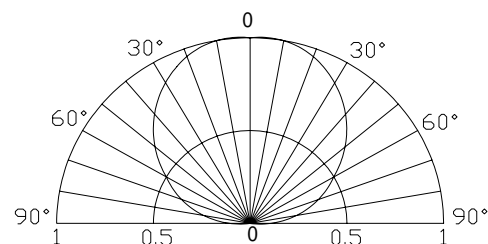
**■Outline Dimension**


Unit:mm  
Tolerance:±0.3mm  
1,4 Anode  
2,3 Cathode


**■Absolute Maximum Rating**
**(Ta=25 °C)**

| Item                       | Symbol    | Value      | Unit |
|----------------------------|-----------|------------|------|
| DC Forward Current         | $I_F$     | 35         | mA   |
| Pulse Forward Current*     | $I_{FP}$  | 100        | mA   |
| Reverse Voltage            | $V_R$     | 5          | V    |
| Power Dissipation          | $P_D$     | 133        | mW   |
| Operating Temperature      | $T_{opr}$ | -30 ~ +85  |      |
| Storage Temperature        | $T_{stg}$ | -40 ~ +100 |      |
| Lead Soldering Temperature | $T_{sol}$ | 260 /5sec  | -    |

\*Pulse width Max.10ms Duty ratio max 1/10

**■Directivity**

**■Electrical -Optical Characteristics**
**(Ta=25 °C)**

| Item                      | Symbol          | Condition  | Min. | Typ. | Max. | Unit    |
|---------------------------|-----------------|------------|------|------|------|---------|
| DC Forward Voltage        | $V_F$           | $I_F=30mA$ | 3.0  | 3.3  | 3.8  | V       |
| DC Reverse Current        | $I_R$           | $V_R=5V$   | -    | -    | 10   | $\mu A$ |
| Luminous Intensity*       | $I_v$           | $I_F=30mA$ | -    | 8800 | -    | mcd     |
| Chromaticity Coordinates* | x               | $I_F=30mA$ | -    | 0.27 | -    |         |
|                           | y               | $I_F=30mA$ | -    | 0.28 | -    |         |
| 50% Power Angle           | $2\theta_{1/2}$ | $I_F=30mA$ | -    | 120  | -    | deg     |

\*1 Tolerance of chromaticity coordinates is ±10%

\*2 Tolerance of luminous intensity is ±15%