

Rev	AWO #	Description	Date	Appr
-		RELEASED	2/25/10	

6

5

4

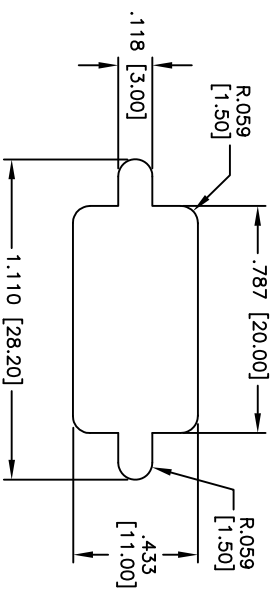
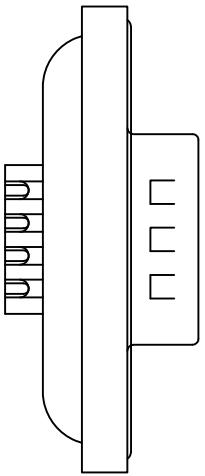
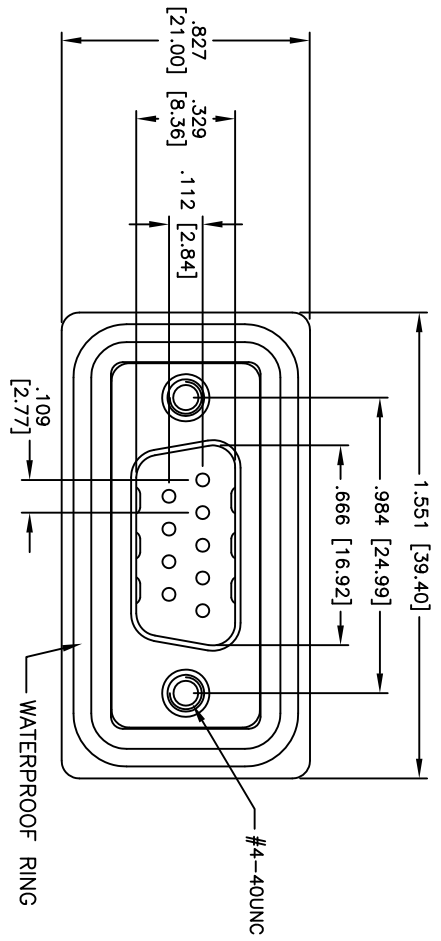
3

2

1

APPROVED: _____

DATE: _____ TITLE: _____



RECOMMENDED PANEL CUT-OUT

SPECIFICATIONS:

- Material: Insulator: PBT, glass reinforced, rated UL 94V-0
- Insulator color: Black
- Contacts: Brass
- Shell: Carbon Steel per, tin over nickel.
- Boardlock: Copper Alloy, tin over nickel.
- Screwlock: Brass per, tin over nickel.
- Plating: 30u" Gold over Nickel underplate on contact area, Tin over Copper underplate on tails.

- Electrical: Operating voltage: 250 VAC max
- Current rating: 5 Amps max
- Contact resistance: 25 mohms max
- Insulation resistance: 5,000 Mohms min
- Dielectric withstanding voltage: 1,000 VAC for 1 minute
- Temperature Rating: Operating temperature: -55°C to +105°C



Environmental: Lead free, RoHS compliant
Recommended soldering temp: 235°C for 5 seconds

UNLESS OTHERWISE SPECIFIED ALL DIMENSIONS ARE INCHES [MM] TOLERANCES: EXCEPT AS NOTED INCHES	
.X ± .10	ØXX ± .10
.XX ± .020	ØXXX ± .015
.XXX ± .015	ØXXXX ± .010
APPROVALS	DATE
DRAWN	DY
CHECKED	
APPROVED	

ADAM TECH
909 Railway Avenue, Union, NJ 07083
Phone: 908-687-5000 Fax: 908-687-5710

TITLE: D-SUB WATERPROOF CONNECTOR
SOLDER CUP, PLUG, 30u" SEL GOLD PLATED

SIZE	PART NO.	REV.
X	DE09-PD-ESWP-30	-
REF: S00142T	SCALE: NTS	SHEET 1 OF 1

6

5

4

3

2

1