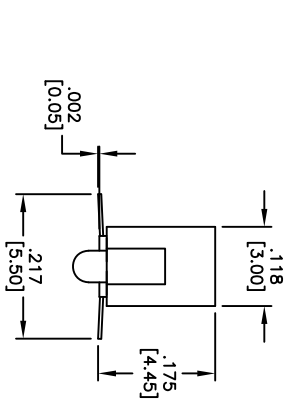
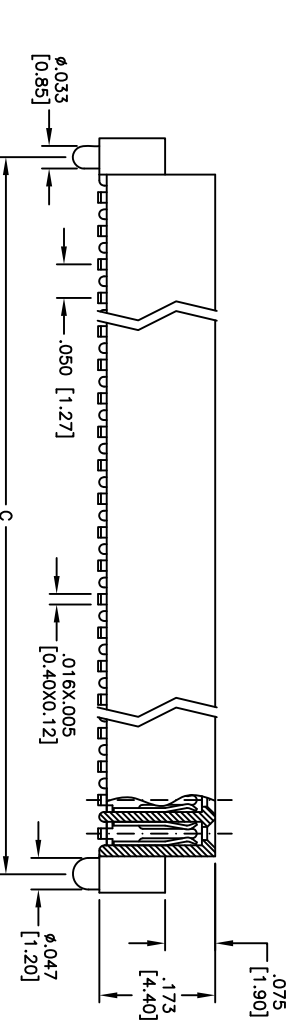
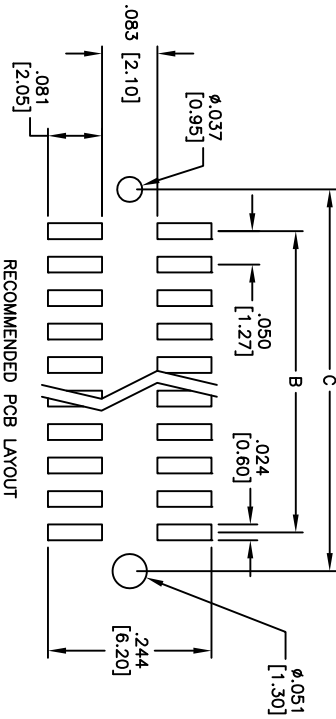
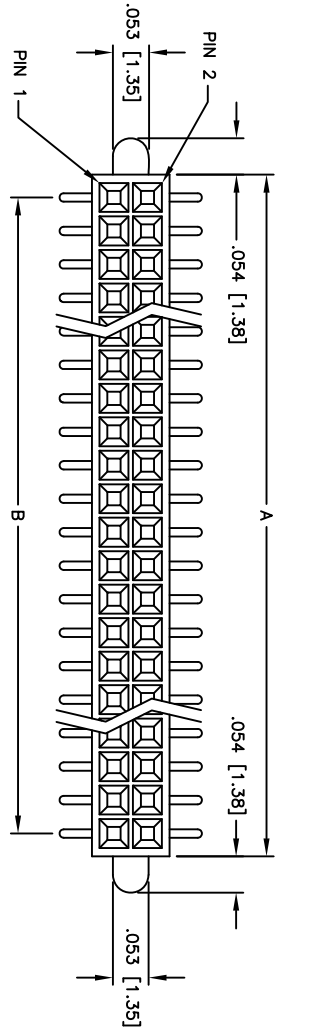


Rev	AWO #	Description	Date	Appr
-		RELEASED	10/04/10	

APPROVED: \_\_\_\_\_  
 DATE: \_\_\_\_\_ TITLE: \_\_\_\_\_



Positions: 04 thru 100  
 A = .050 [1.27] x No. of Positions per Row + .018 [0.46]  
 B = .050 [1.27] x No. of Spaces  
 C = .050 [1.27] x No. of Positions per Row + .070 [1.78]

UNLESS OTHERWISE SPECIFIED  
 ALL DIMENSIONS ARE IN INCHES [MM]  
 TOLERANCES: EXCEPT AS NOTED  
 INCHES HOLEES [MM]  
 .X ± .10 ØXX ± .10  
 .XX ± .020 ØXXX ± .015  
 .XXX ± .015 ØXXXX ± .010

**ADAM TECH**  
 909 Rahway Avenue, Union, NJ 07083  
 Phone: 908-687-5000 Fax: 908-687-5710

TITLE: .050 x .050 DUAL ROW RECEPTACLE STRIP  
 SMT TYPE, END PEGS

DRAWN	DY	10/04/10
CHECKED		
APPROVED		

SIZE	PART NO.	REV.
X	HRS-2E-XX-SG-SMT-E	-
REF: S00039T	SCALE: NTS	SHEET 1 OF 1

**SPECIFICATIONS:**  
 Material: Insulator: Hi-temp thermoplastic, rated UL 94V-0  
 Insulator color: Black  
 Contacts: Phosphor Bronze  
 Plating: Tin over Copper underplate on SMT tails.  
 Gold flash over Nickel underplate on contact area.  
 Electrical: Current rating: 1 Amp max.  
 Contact resistance: 20 mohms max  
 Insulation resistance: 5,000 Mohms min.  
 Dielectric voltage: 500 VAC for 1 minute  
 Temperature Rating: Operating temperature: -40°C to +105°C  
 Environmental: Lead free, RoHS compliant  
 Recommended soldering temp: 260°C for 5 seconds

