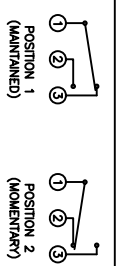
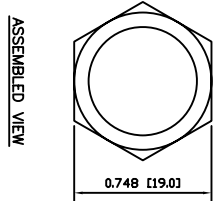
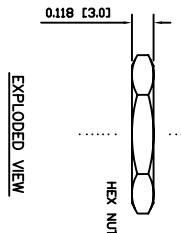
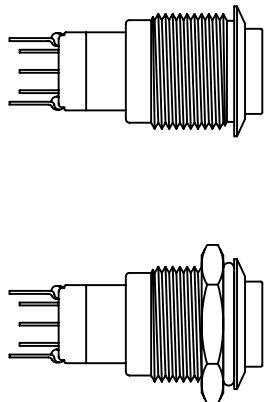


MAXIMUM PANEL THICKNESS: 0.315 [8.0mm]



SUGGESTED PANEL CUTOUT

SCHEMATIC

SPECIFICATIONS

FUNCTION: 1P2T ON-(ON)  
 RATING: 2A 48VAC  
 CONTACT RESISTANCE: Initial: 50mΩ Max. at 1A 12VDC  
 INSULATION RESISTANCE: 1,000MΩ Min. at 500VDC  
 DIELECTRIC STRENGTH: 2,000VAC Min. for 1 Minute  
 ELECTRICAL LIFE: 50,000 Cycles  
 MECHANICAL LIFE: 200,000 Cycles  
 TEMPERATURE: Operating: -20°C to 55°C  
 INGRESS PROTECTION: IP65  
 APPROVALS: **ROHS COMPLIANT**

MATERIALS

BUSHING: Aluminum  
 BASE: Polycarbonate (PC)  
 Polybutylene Terephthalate (PBT)  
 ACTUATOR: Aluminum  
 Polycarbonate (PC)  
 HARDWARE: Nickel Plated Brass (159)  
 SEALING: Silicone Rubber  
 INNER ASSEMBLY: Polycarbonate (PC)  
 Phosphor Bronze  
 SPRING: Spring Steel  
 CONTACTS: Silver/Cadmium Oxide (AgCdO)  
 TERMINALS: Silver Plated Brass (182)  
 O-RINGS: Silicone Rubber

COLORS AND FINISH

BEZEL: Black  
 Anodized Finish  
 ACTUATOR: Red  
 Anodized Finish  
 ILLUMINATION: None  
 MARKING: None



REV.	A	10/03/24	CAB
COLORS	A	09/07/10	CAB
MATERIALS	B	09/10/16	CAB
SPECIFICATIONS	B	09/09/28	CAB
REFERENCE	REV.	DATE	BY

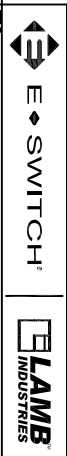
THE INFORMATION CONTAINED IN THIS DOCUMENT IS PROPRIETARY TO E-SWITCH AND IS NOT TO BE COPIED OR TRANSMITTED

REV.	A
------	---

NEW RELEASE DESCRIPTION

20208	09/13/12	PCB	PCB
-------	----------	-----	-----

INCHES [MILLIMETERS]  
 GENERAL TOLERANCES ±0.008 [±0.2] / ±.1  
 SCALE DRAWING NOT TO SCALE  
 PROJECTION THIRD ANGLE



ITEM NUMBER: PV3SWH2B019  
 DATE: AUG 13, 2012  
 REVISION: A