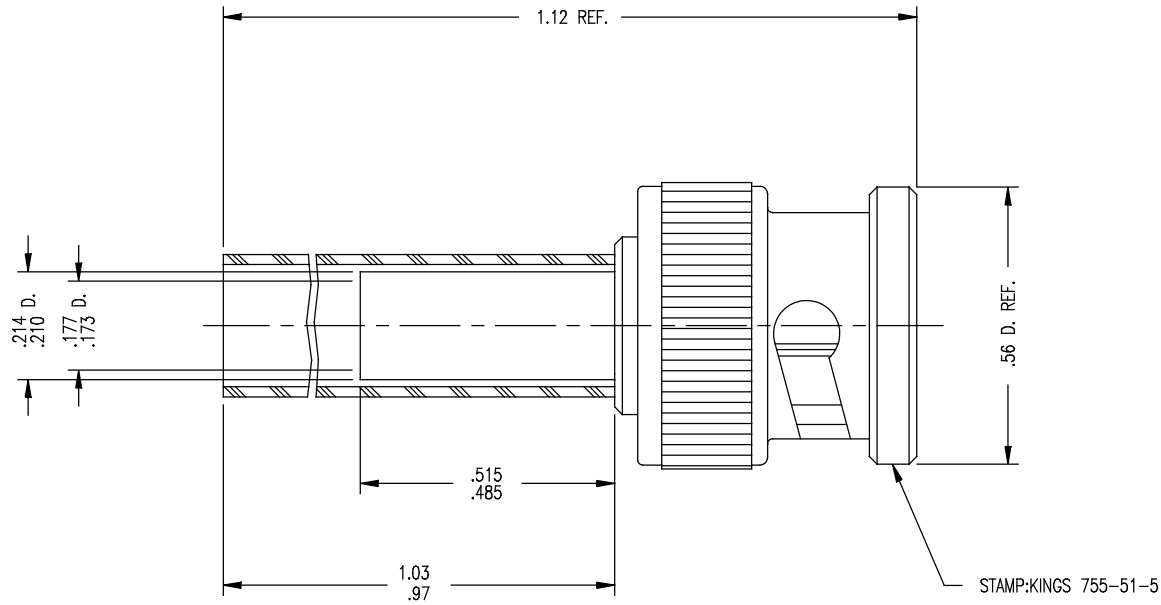



DASH NO.	M CODE	MADE FROM
----------	--------	-----------



NOTES:

1. FOR USE WITH GEN. DYNAMICS C8811-1 CABLE.
2. FOR CABLE TRIMMING USE KTJ-116 & KTD-161.
3. FOR FORMING USE CRIMP DIE SIZE 07.
4. FOR CABLING INSTRUCTIONS SEE 3-462.
5. INTERFACE PER MIL-STD-348, FIG. 301.1.
6. OBSOLETE NO REPLACEMENT.
7. MATERIALS:
 INSULATORS: TEFLON, L-P-403
 GASKET: SIL. RUB. ZZ-R-765
 K-GRIP SLEEVE: COM. BRONZE TUBE
 SPRING WASHER : BER. COP., QQ-B-626
 OUTER CONTACT
 ALL OTHER METAL PARTS: BRASS, QQ-B-626
8. FINISHES:
 CONTACT: HARD GOLD PLT. PER MIL-G-45204
 ALL OTHER METAL PARTS: SILVER PLT. PER QQ-S-365
9. ELECTRICAL CHARACTERISTICS:
 NOMINAL IMPEDANCE: 50 OHMS
 VOLTAGE RATING: 500 VRMS
 FREQUENCY RANGE: DC TO 4GHz
10. POLYOLEFIN SHRINK TUBING.

GSD

755-51-5 GSD	REVISIONS	
	ISSUE	CHANGES
	0	ER 31588 WJM 12 APR 90
1	CN 37163 B PG 10/22/96	
GSD		
SCALE 4:1		
APPROX SURFACE AREA		
USED ON		
REF: GEN. DYN. C8830-1REVH		
BNC PLUG		
DRAWN WJM	DATE 12 APR 90	
DESIGN LI	DATE 4 MAY 90	
APPR.	DATE	
 KINGS ELECTRONICS CO., INC. TUCKAHOE, NEW YORK 10707		
755-51-5 GSD		