



CM0100Q0805AT COMMON MODE FILTER SPECIFICATION

Rev. A

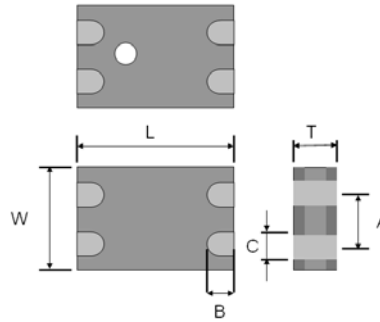
PRODUCT FEATURES

1. Surface mount common mode filter with a small size of 2.0 X 1.2 X 1.0 mm, RoHS compliant.
2. Provide wide pass band and high attenuation for common mode noise.
3. Highly stable under temperature and humidity changes.

RF CHARACTERISTICS

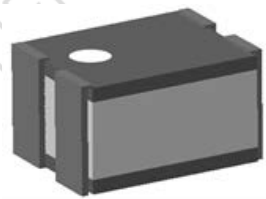
P/N	CM0100Q0805AT	Specification
Cut-off Frequency		4 GHz (Typical)
Common Mode Impedance		90 Ohms \pm 20% @ 100MHz
DC Resistance		1.0 Ω max.
Rated Current		200 mA
Characteristic Impedance (Differential)		100 Ω (Typical)
Operating temperature range		-40°C to +85°C

PHYSICAL DIMENSIONS



Symbol	Dimension (mm)
L	2.00 \pm 0.10
W	1.25 \pm 0.10
T	1.00 \pm 0.10
A	0.68 \pm 0.15
B	0.35 \pm 0.15
C	0.35 \pm 0.15

TERMINAL CONFIGURATION



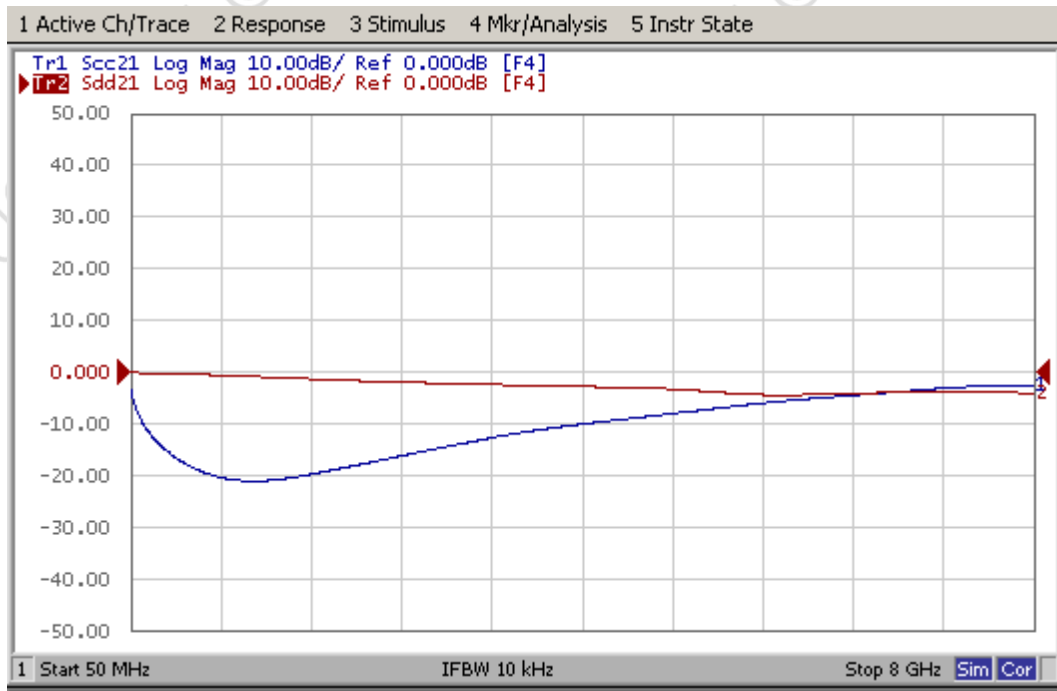
PCB DESIGN/LAYOUT CONSIDERATION

Figure	Symbol	Dimension (mm)
	L1	1.20 \pm 0.10
	L2	2.60 \pm 0.05
	L3	0.80 \pm 0.05
	L4	0.33 \pm 0.05

Design trace width to be 50 Ω impedance.



Typical RF Performance



Frequency VS Impedance

