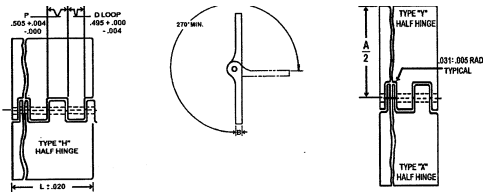


AVIAQUIP

MS20001 STRUCTURAL EXTRUDED HINGE



STANDARD LENGTH 72 INCHES

OTHER LENGTHS AVAILABLE
ON REQUEST.

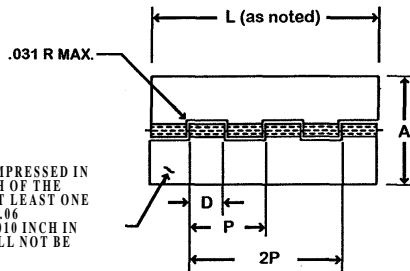
Dash Number	A Ref Width Open	B (Thickness)		D Loop	Hole Dia. +.005	P Pitch	Pin Diameter
		Max.	Min.				
-2	1.062	.056	.044	.495	.093	1.00"	.090
-3	1.250						
-4	1.500						
-5	1.750						
-6	2.000						
-8	2.000	.076	.064		.183		1.80

MATERIAL : ALUMINIUM ALLOY 2024T-3511

FINISH : ANODIZED OR BARE

**PART NUMBERS : EXAMPLE - MS20001-4-7200 COMPLETE HINGE - BARE 72" LONG
MS20001P4-7200 COMPLETE HINGE ANODIZED FINISH 72" LONG**

MS20257 CONTINUOUS HINGE - FOLDED



THE MARKING MS20257-(SIZE DASH NUMBER) SHALL BE IMPRESSED IN THE HINGE AT REGULAR INTERVALS ALONG THE LENGTH OF THE HINGE SO THAT ANY THREE INCH LENGTH WILL SHOW AT LEAST ONE COMPLETE IDENTIFICATION IN FIGURES NOT LESS THAN .06 INCH HIGH. DEPRESSED FIGURES SHALL NOT EXCEED .010 INCH IN DEPTH. DESIGNATION FOR ANODIZING AND LENGTH SHALL NOT BE INCLUDED IN THE MARKING.

Dash Number For Complete Hinge			A Width Open +.016	B Thickness		D Loop +.001 -.008	Hole Diameter +.007 -.001		P Pitch	Pin Diameter (Ref)		Stock Length	
Aluminium	CRES			Alum. Alloy	CRES		Alum. Alloy	CRES		Alum. Alloy	CRES	Alum. Alloy	CRES
<u>1/</u>	<u>2/</u>												
-1	P1	C1	.750	.032	.031	.490	.066	.066	1.000	.063	.063	72"	72"
-2	P2	C2	1.062		.037		.093				.090		
-3	P3	C3	1.250	.040	.050		.121				.118		
-4	P4	C4	1.500		.062						.180		
-5	P5	C5	2.000	.051			.183						
-6	P6	C6		.064		1.990	.183	.183	4.047	.180			

**-1 = BARE ALUMINIUM P = ANODIZED
C = CORROSION RESISTANT STEEL**

Requirements:

- Material: aluminum alloy, 5052, H24 or H34 per 00-A250/8. Corrosion resistant steel per ASTM
- Finish: aluminum alloy, anodized, MIL-a-0625 Type II or none, depending on coding. Corrosion resistant steel: none

Example Part Numbers:

MS20257-2-7200 = Complete hinge Aluminium alloy, 1.062 wide x 72 inches long with CRES pin
 unanodized
 MS20257P2-7200 = Complete hinge Aluminium alloy anodized 1.062 wide x 72 inches long with CAD plated CRES pin
 MS20257C2-7200 = Complete hinge Corrosion resistant steel 1.062 wide x 72 inches long with CRES pin

Product information and part numbers shown on these pages are not guaranteed correct by AVIAQUIP PTY. LTD and are subject to change without notice.