

PBB7C Series

100-225W - AC/DC DUAL OUTPUT

FEATURES

- Small and compact PCB construction
- Power factor 0.99
- Harmonic attenuator (Complies with IEC61000-3-2)
- Universal input voltage (AC85~264VAC)
- UL, C-UL recognized, TUV approved
- Remote ON/OFF option



SPECIFICATIONS

INPUT	
Voltage	AC85-264V or DC120-370V.
Frequency	50/60, 47-63Hz or DC.
Inrush current	30A typ, AC200V, load 100%.
Current	0.7A typ AC200V load 100% for 100W units
Power factor:	0.93 typ AC200V
Leakage current	0.75mA max (60Hz according to IEC60950 and DENTORI)
Efficiency:	80% typ
Isolation	Input-Output 3,000V AC, 1 minute, 50MΩμ Input FG 2,000V AC, 1 minute, 50MΩμ Output FG 500V AC, 1 minute, 50MΩμ
OUTPUT	
Voltage	See table.
Current	See table.
Power	100W to 225W.
Line regulation	0.4% max.
Load regulation	0.8% max.
Ripple	V1: 120-300mVp-p max, 0 to +50°C. V2: 150-240mVp-p max, 0 to +50°C.
Temperature regulation	V1: 50mV max, 0 to +50°C.
Drift	0.4% max.
Start-up time	V1: 250ms max; V2: 500ms max
Hold-up time	V1: 40ms typ; V2: 20ms max
Output voltage adjust	V1: 2.8-3.6V / 4.5-5.5V , V2 fixed.
Overcurrent protection	V1: Works over 105% of rating current and recovers automatically. V2: Works over 101% of peak current and recovers automatically.
Overvoltage protection	V1: Works over 115% of rating, by zener diode clamping. V2: Works over 115-140% of rating.
Remote on/off	Optional.

ENVIRONMENTAL	
Operating temperature	-10 to +70°C, consult sales office for details
Operating humidity	20-90% RH
Vibration	10-55Hz, 2G, 3 minutes period, 60 minutes each X, Y and Z axis.
Impact	20G, 11ms, once each X, Y and Z axis.
STANDARDS	
Safety standards	UL60950-1, C-UL recognised, TUV approved, Complies with DEN-AN. AS/NZS CISPR11 Group 1 Class A.
EMC standards	EN61204-3, EN61000-6-2, EN61000-4-2,-3,-4,-5,-6,-8,-11
EMI standards	Complies with FCC-B, CISPR22-B, EN55011-B, EN55022-B, VCCI-B
CE marking	Complies with LVD and EMC Directives

SELECTION TABLE

MODEL NUMBER	OUTPUT 1		OUTPUT 2			MAX POWER
	VNOM	VNOM	VNOM	INOM	IPEAK	
PBB7C-0512M-SN	5V	5A	12V	5A	10A	100W
PBB7C-0324M-SN	3.3V	5A	24V	4A	7A	100W
PBB7C-0524M-SN	5V	5A	24V	4A	17A	100W
PBB7C-0530M-SN	5V	5A	30V	3.2A	5.6A	100W
PBB7C-0536M-SN	5V	5A	36V	2.7A	4.7A	100W
PBB7C-0512R-SN	5V	5A	12V	7.5A	14A	150W
PBB7C-0324R-SN	3.3V	5A	24V	6A	10A	150W
PBB7C-0524R-SN	5V	5A	24V	6A	10A	150W
PBB7C-0530R-SN	5V	5A	30V	4.8A	8A	150W
PBB7C-0536R-SN	5V	5A	36V	4A	6.7A	150W
PBB7C-0512E-SN	5V	5A	12V	10A	20A	225W
PBB7C-0324E-SN	3.3V	5A	24V	9A	14A	225W
PBB7C-0524E-SN	5V	5A	24V	9A	14A	225W
PBB7C-0530E-SN	5V	5A	30V	7.2A	11A	225W
PBB7C-0536E-SN	5V	5A	36V	6A	9.3A	225W

OPEN FRAME & ENCLOSED

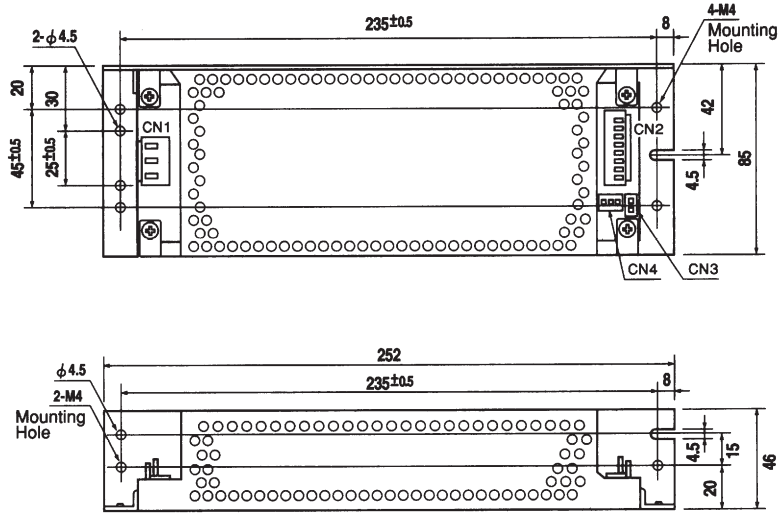
PBB7C Series

100-225 WATTS - AC/DC DUAL OUTPUT

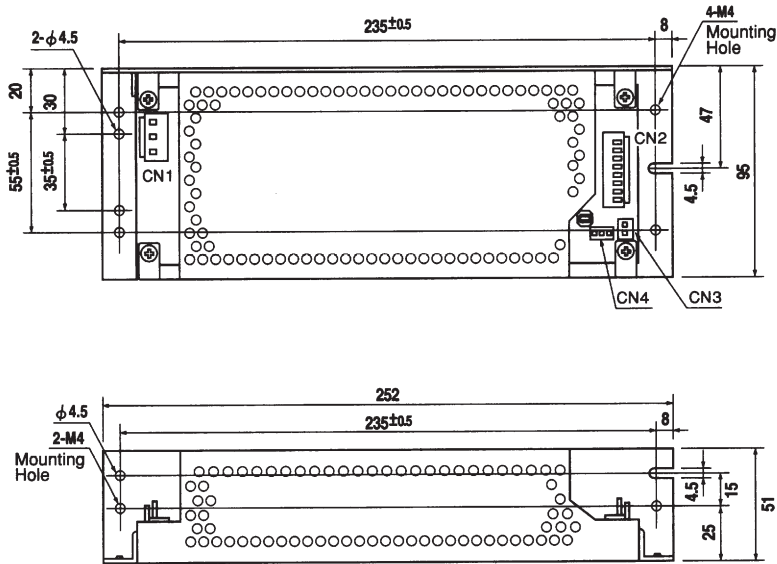
OPEN FRAME & ENCLOSED

TECHNICAL ILLUSTRATIONS

PBB7C-M



PBB7C-R



PBB7C-E

