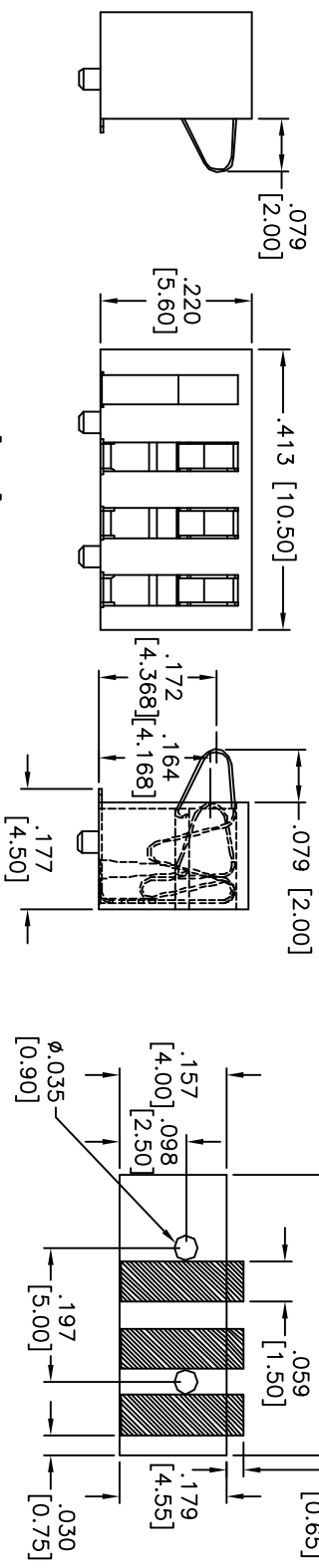
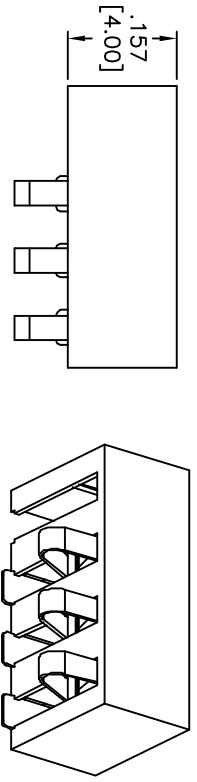
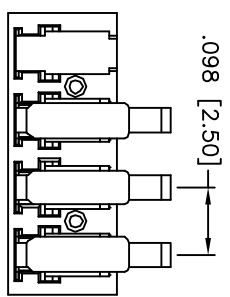


Rev	AWO #	Description	Date	Appr
-		RELEASED	12/14/10	

APPROVED: _____
 DATE: _____ TITLE: _____



RECOMMENDED PCB LAYOUT
(TOP VIEW)



SPECIFICATION:
Material:
 Insulator: LCP, Rated UL-94V-0
 Insulator color: Black
 Contacts: Beryllium Copper
Plating:
 30u"Gold over Nickel underplate overall.
Electrical:
 Current rating: 1.0 Amps max.
 Contact resistance: 50 mohms max.
 Insulation resistance: 1000 Mohms min @250 VDC.
 Dielectric withstanding voltage: 250 VAC for 1 minute
 Temperature Rating:
 Storage temperature range: -40°C ~ +85°C
 Operating temperature range: -30°C ~ +70°C
Environmental:
 Lead free, RoHS compliant.
 Recommended soldering temp: 260°C for 5 sec.



ADAM TECH

909 Railway Avenue, Union, NJ 07083
 Phone: 908-687-5000 Fax: 908-687-5710

TITLE: .098 [2.50] PITCH BATTERY CONNECTOR
 SMT TYPE

UNLESS OTHERWISE SPECIFIED ALL DIMENSIONS ARE INCHES [MM]	
TOLERANCES EXCEPT AS NOTED	
INCHES	HOLES
.X ± .10	ØX ± .10
.XX ± .020	ØXXX ± .015
.XXX ± .015	ØXXX ± .010
APPROVALS	
DATE	
DRAWN	AY
12/14/10	
CHECKED	VW
12/14/10	
APPROVED	

SIZE	PART NO.	REV.
X	MBC-K-04-X01	-
REF:	S0014TT	SHEET 1 OF 1
SCALE:	NIS	