

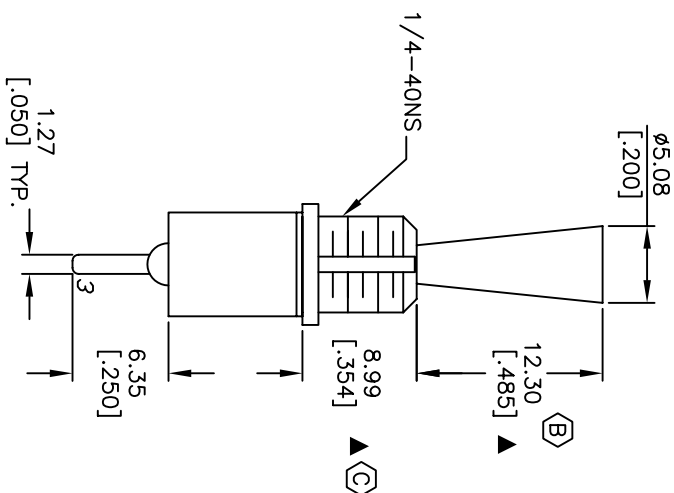
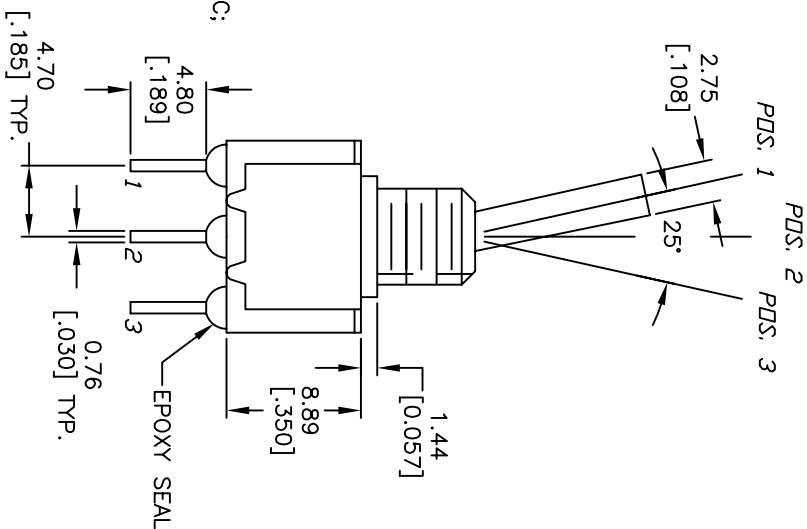
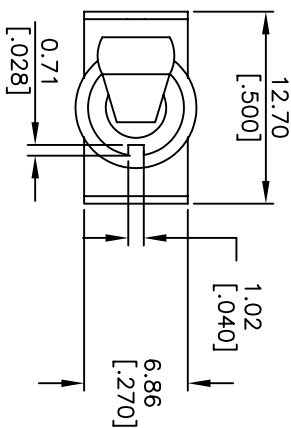
CIRCUIT: SPDT

CONTACT CONFIGURATION

SWITCH FUNCTION	PDS: 1	PDS: 2	PDS: 3
PDS: 1			
DN	DN	DN	DN
2-3	OPEN	OPEN	2-1

NOTES:

1. ALL DIMENSIONS IN MM [INCH]
2. GENERAL TOLERANCE: X.X=±0.4  
X.XX=±0.25
3. TERM. NOS. FOR REF. ONLY
4. RATING: 5 AMPS WITH RESISTIVE LOAD @120VAC or 28VDC;  
2 AMPS WITH RESISTIVE LOAD @250VAC
5. FIXED TERM. & MOVING CONTACT:  
COPPER ALLOY W/SILVER PLATE.
6. ELECTRICAL LIFE: 50,000 make-and-break cycles  
at full load.
7. INSULATION RESISTANCE: 1,000M ohm min.
8. DIELECTRIC STRENGTH: 1,000V RMS @sea level.
9. OPERATING TEMP.: -30°C to 85°C.
10. ▲ DENOTES CRITICAL PARAMETER.
11. 2002/95/EC (ROHS) COMPLIANT



REV.	ECN No.	DESCRIPTION	DATE	CHKD
D	15433	CHANGED DIM FROM 8.99	10/21/05	PH
C	15312	1.44 WAS 1.07	9/21/05	PH
B	13214	12.30 WAS 11.43	6/13/03	AR
A	13128	RELEASED FOR PRODUCTION	5/12/03	AR

TITLE				
100SP3T6B11M2QE				
E-SWITCH®				
SCALE	DATE	DR	DWG	REV
2:1	5/12/03	AR	T113034	D

THE INFORMATION CONTAINED IN THIS DOCUMENT IS PROPRIETARY TO E-SWITCH AND IS NOT TO BE COPIED OR TRANSFERRED