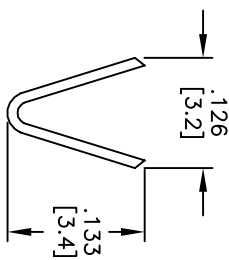
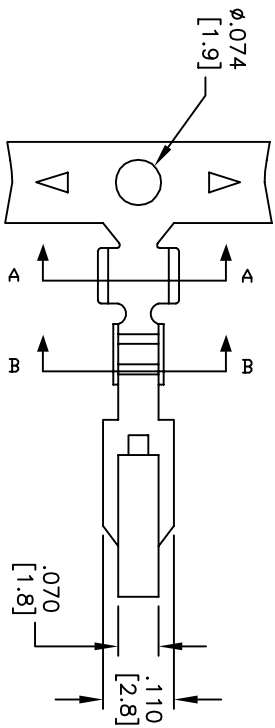
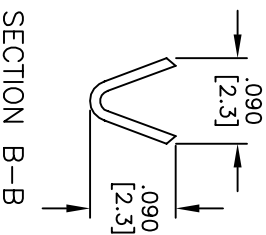
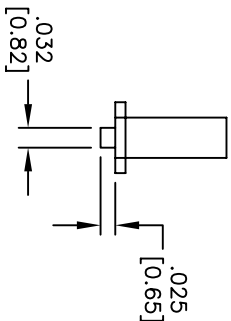
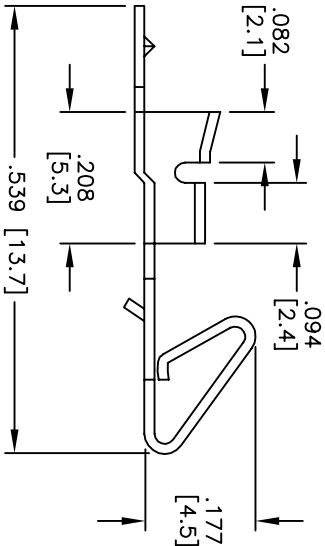


Rev	AWO #	Description	Date	Appr
-		RELEASED	7/7/06	

APPROVED: _____
 DATE: _____ TITLE: _____



SECTION A-A



SECTION B-B

SPECIFICATIONS:

Contact Material: Copper Alloy

Plating: Tin

Wire Range: (24-18) AWG

Max Insulation: ϕ .098 [2.5mm]

Use with MTG-XX Housing

Packaging:

MTG-C-B = (Bulk Packed)

MTG-C-R = 6,000 pieces / reel

Environmental:

Lead free, RoHS compliant



UNLESS OTHERWISE SPECIFIED ALL DIMENSIONS ARE IN INCHES [MM]	
TOLERANCES: EXCEPT AS NOTED	
INCHES	HOLES
.X ± .10	Ø.X ± .10
.XX ± .020	Ø.XX ± .015
.XXX ± .015	Ø.XXX ± .010
APPROVALS	DATE
SS	7/7/06

ADAM TECH

909 Railway Avenue, Union, NJ 07083
 Phone: 908-687-5000 Fax: 908-687-5710

TITLE: POWER LATCH CRIMP, FOR MTG-06
 .156 [3.96] PITCH

DRAWN	SS	7/7/06	SIZE	PART NO.	REV.
CHECKED			X	MTG-C-X	-
APPROVED			REF:	SCALE: NTS	SHEET 1 OF 1