



REV A January 2011

Oscilent Controlled Document

Ordering Code / Part Number	Product Description
813-SL92.16M-44A	92.16MHz IF SAW Filter 44.04MHz Bandwidth

### Specification Contents

- o Mechanical Dimensions
- o Test Circuit
- o Maximum Ratings
- o Electrical Specification
- o Frequency Response
- o Smith Chart
- o VSWR

### Notes

- o Electrostatic Sensitive Device (ESD) 
- o Avoid excessive ultrasonic exposure
- o Solderability compatible with JEDEC J-STD-020C Pb-free process, 260°C peak reflow temperature
- o This product complies with EU directive 2002/95/EC (RoHS compliance)



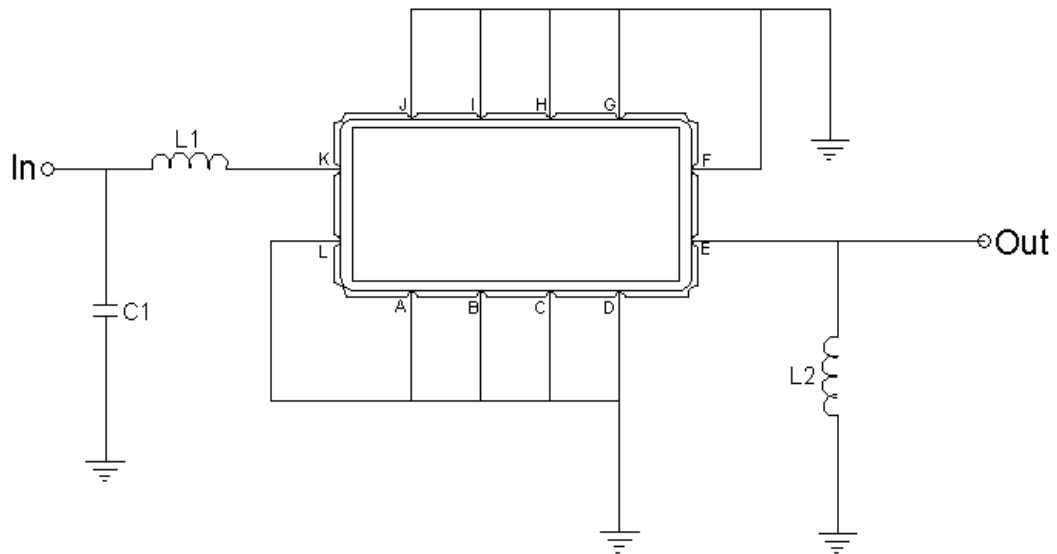


## Mechanical Dimensions (mm)



Pin Description	
A, B, C, D, F, G, H, I, J, L	Ground
K	Input
E	Output

## Test Circuit



Test Fixture & Values	
Input	L1 = 82 nH, C1=22pF
Output	L2 = 68 nH
Source/Load Impedance	50 Ω



## Maximum Ratings

Parameters Description	Unit	Minimum	Typical	Maximum
Operating Temperature Range	°C	-20	-	70
Storage Temperature Range	°C	-40	-	85
Maximum DC Voltage	V	-	-	10
Maximum Input Power	dBm	-	-	10
Source Impedance (single ended) <sup>(1)</sup>	Ω	-	50	-
Load Impedance (single ended) <sup>(1)</sup>	Ω	-	50	-

Notes: With Matching Network (Ref. Testing Environment Circuit as shown above).

Those impedances could be modified with different impedance values and/or structures, if necessary.

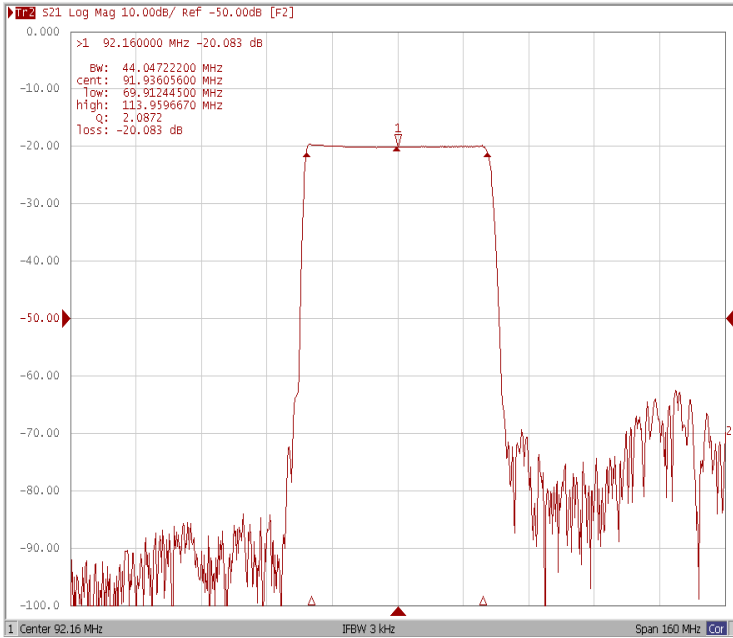
## Electrical Specification

Parameters Description	Unit	Minimum	Typical	Maximum
Center Frequency (Fo)	MHz	-	92.16	-
Insertion Loss at Fo	dB	-	20.0	22.0
Group Delay Variation (71.0MHz~113.0MHz)	ns	-	17	40
Absolute Delay Time at Fo	us	-	0.98	-
Temperature Coefficient	ppm/°C	-	-86	-
Amplitude Ripple (71.0MHz~113.0MHz)	dB	-	0.50	0.90
Bandwidth at -1dB	MHz	43.50	44.04	-
Bandwidth at -40dB	MHz	-	49.60	50.50
Relative Attenuation				
@62.0MHz	dB	-	60	-
@121.0MHz	dB	-	55	-
Ultimate Rejection	dB	-	43	-

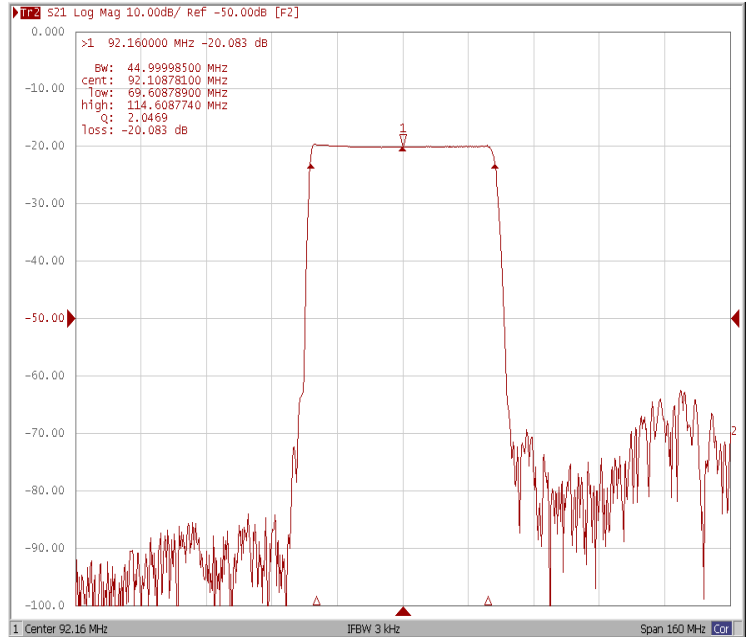


## Frequency Response

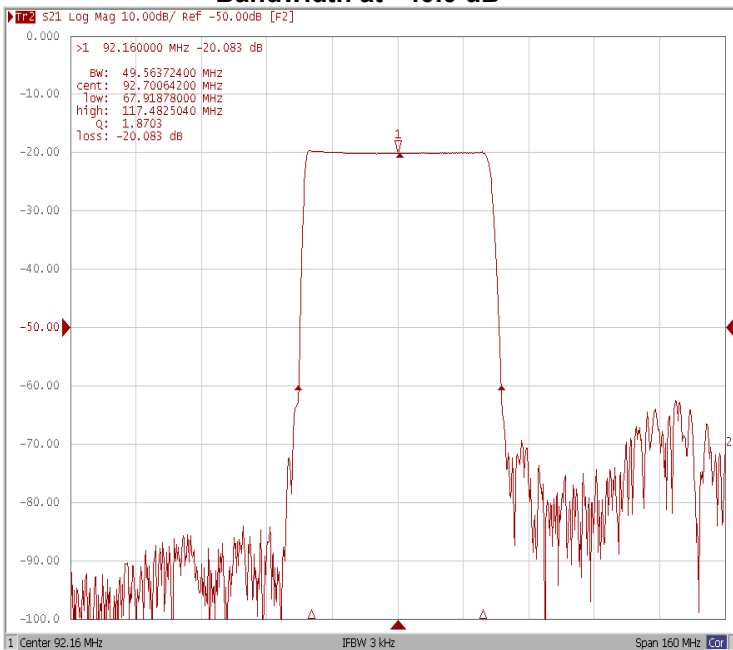
Bandwidth at -1.0 dB



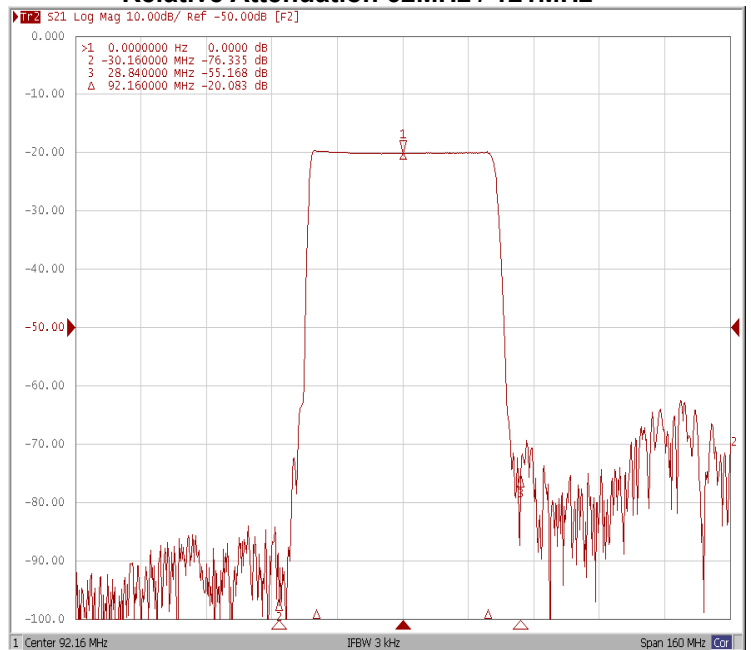
Bandwidth at -3.0 dB



Bandwidth at -40.0 dB

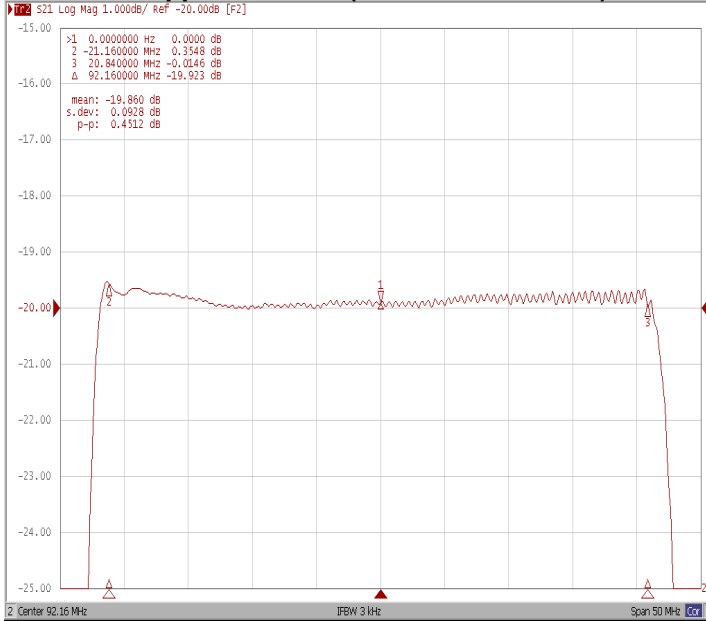


Relative Attenuation 62MHz / 121MHz

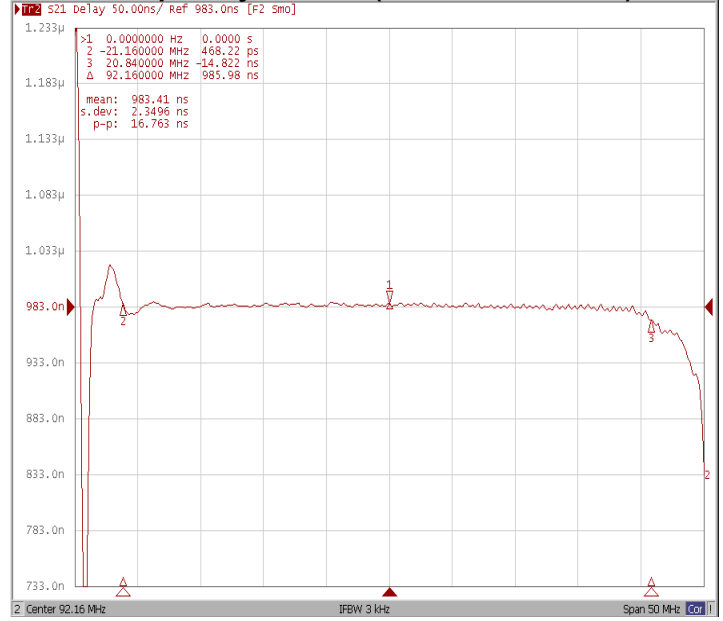




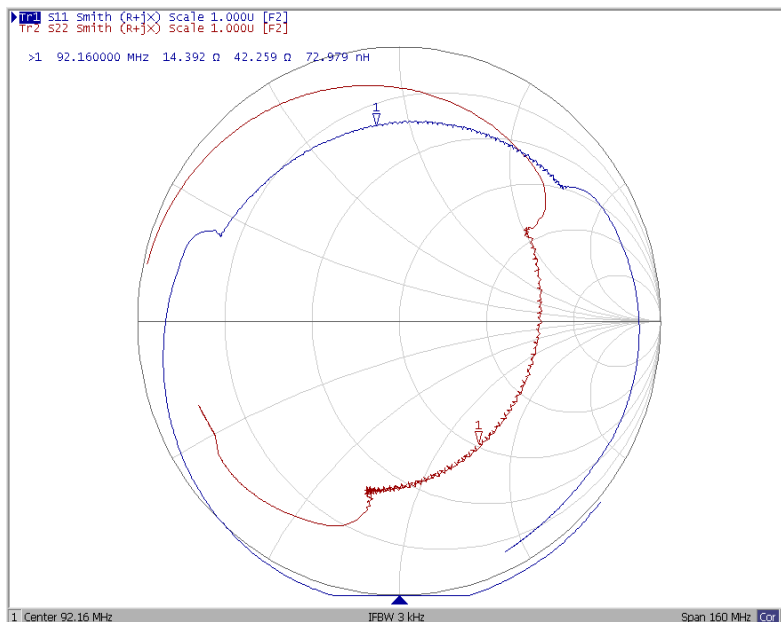
### Ripple Variation (71.0MHz~113.0MHz)



### Group Delay Variation(71.0MHz~113.0MHz)



### Smith Chart





### VSWR

