

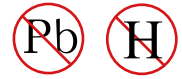


DATA SHEET

SEMICONDUCTOR

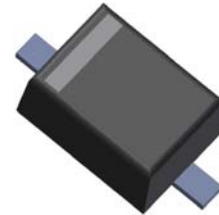
1SS355FL-A

200mW SOD-323 SURFACE MOUNT Small Outline Flat Lead Plastic Package High Speed Switching Diode



Absolute Maximum Ratings $T_A = 25^\circ\text{C}$ unless otherwise noted

Symbol	Parameter	Value	Units
P_D	Power Dissipation	200	mW
T_{STG}	Storage Temperature Range	-65 to +150	$^\circ\text{C}$
T_J	Operating Junction Temperature	+150	$^\circ\text{C}$
V_R	Reverse Voltage	80	V
V_{RM}	Repetitive Peak Reverse Voltage	90	V
I_{FM}	Forward Current	250	mA
I_O	Continuous Forward Current	150	mA
I_{FRM}	Repetitive Peak Forward Current	500	mA

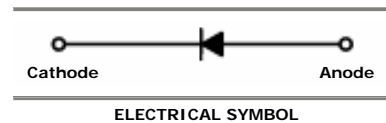


SOD-323 Flat Lead

These ratings are limiting values above which the serviceability of the diode may be impaired.

Specification Features:

- High Speed Switching Device ($T_{RR} < 4.0$ nS)
- General Purpose Diodes
- Flat Lead SOD-323 Small Outline Plastic Package
- Surface Device Type Mounting
- Moisture Sensitivity Level 1
- Clip Bonding Construction, Good Thermal Capability
- Pb Free Version and RoHS Compliant
- Matte Tin(Sn) Lead Finish with Nickel(Ni) Underplate
- Band Indicates Cathode
- Halogen Free
- AEC-Q101 qualified
- Base P/N - RoHS compliant, commercial grade
- Base P/N-A - RoHS compliant, AEC-Q101 qualified



DEVICE MARKING CODES:

Device Type	Device Marking
1SS355FL	S4

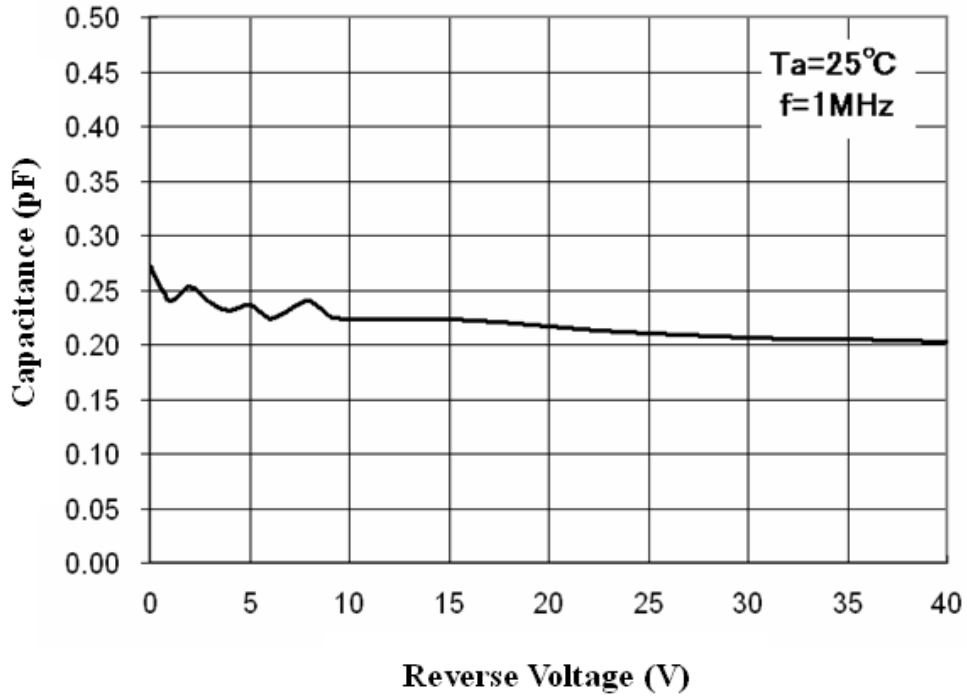
Electrical Characteristics $T_A = 25^\circ\text{C}$ unless otherwise noted

Symbol	Parameter	Test Condition	Limits		Unit
			Min	Max	
B_V	Breakdown Voltage	$I_R = 100\mu\text{A}$	80		Volts
I_R	Reverse Leakage Current	$V_R = 80\text{V}$		100	nA
V_F	Forward Voltage	$I_F = 100\text{mA}$		1.2	Volts
T_{RR}	Reverse Recovery Time	$I_F = 10\text{mA}$ $V_R = 6\text{V}$ $R_L = 100\Omega$		4	nS
C	Capacitance	$V_R = 0.5\text{V}$, $f = 1\text{MHz}$		4	pF

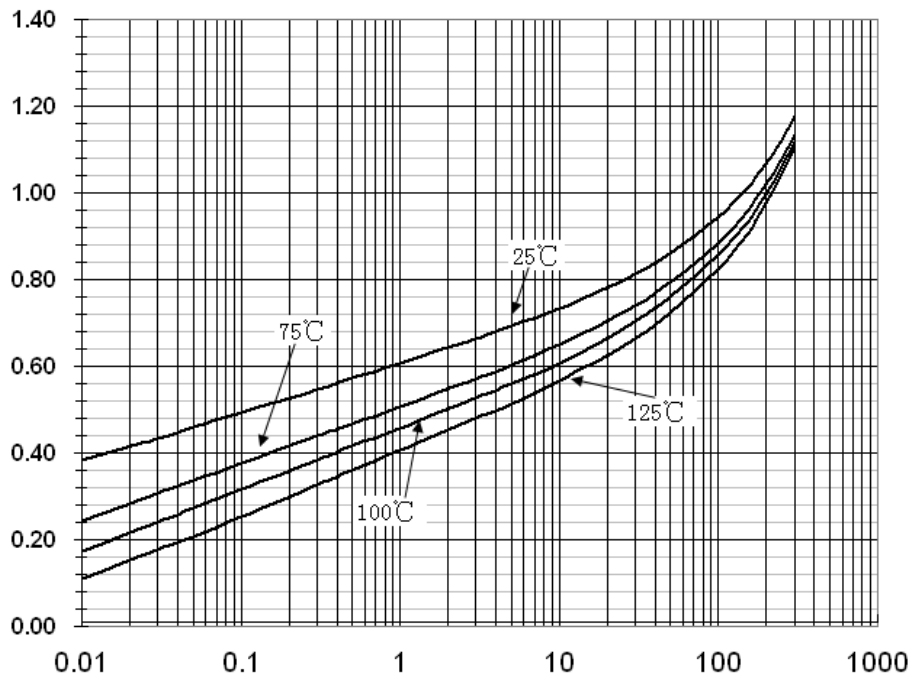
DEVICE CHARACTERISTICS

1SS355FL-A

Total Capacitance

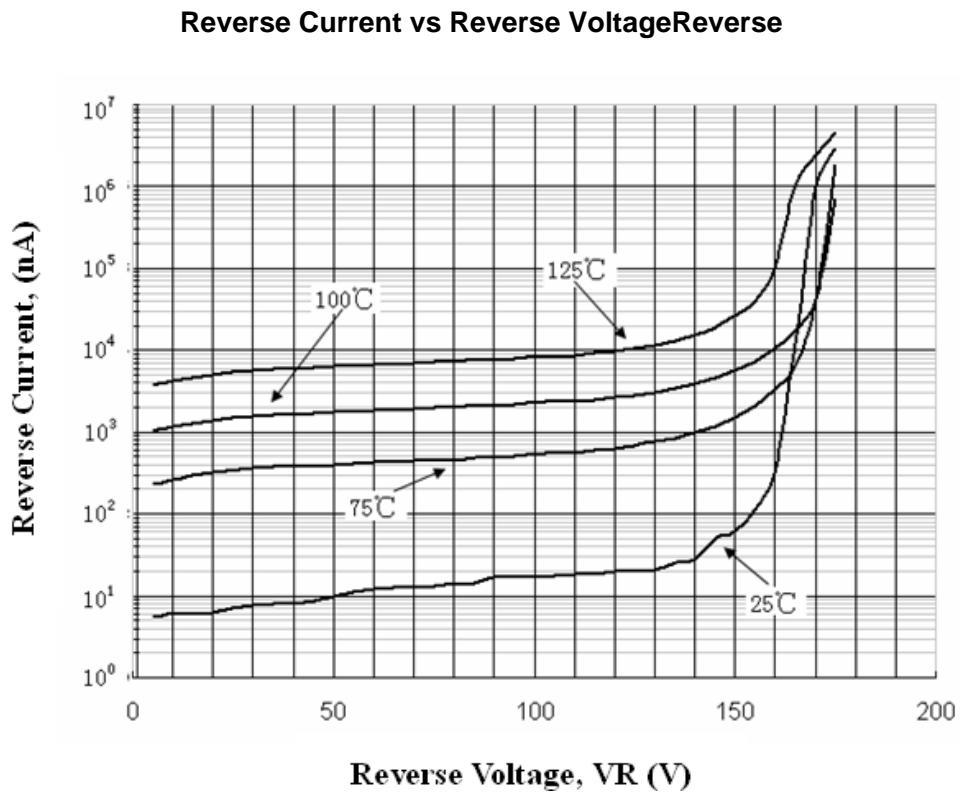
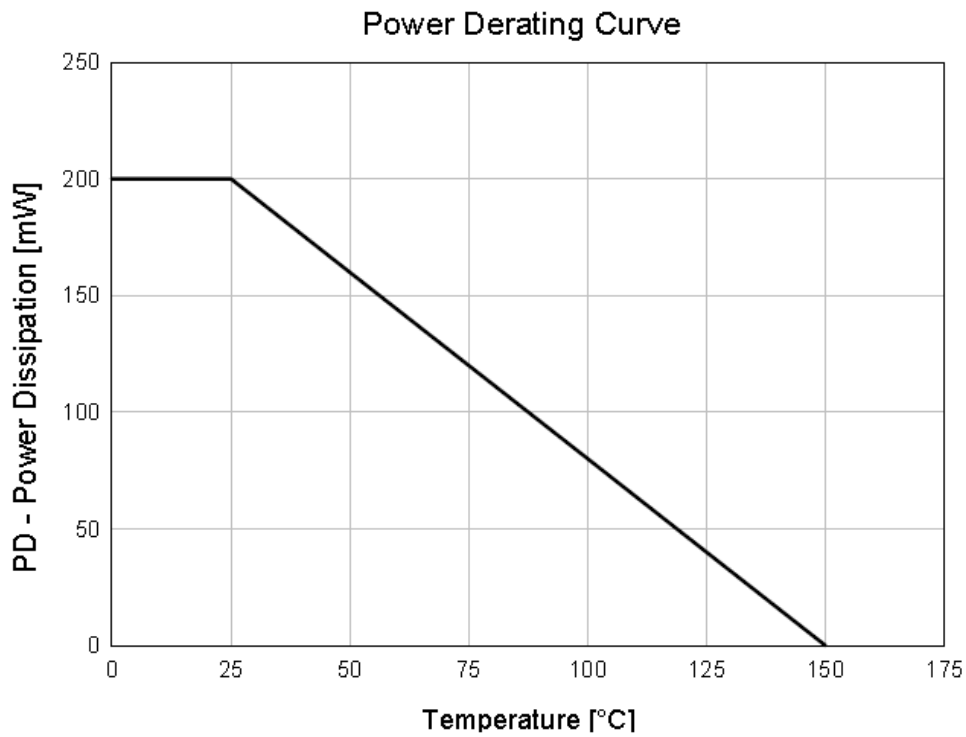


Forward Voltage vs Ambient Temperature



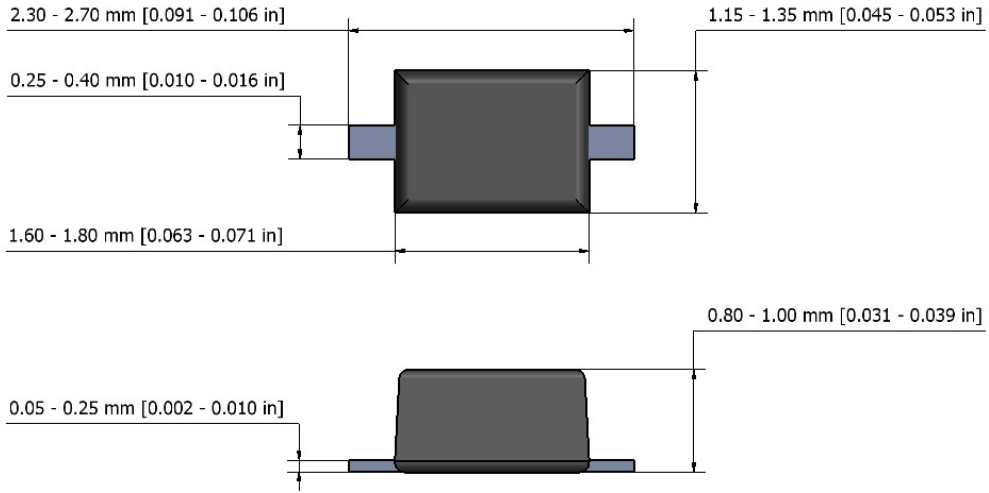
DEVICE CHARACTERISTICS

1SS355FL-A

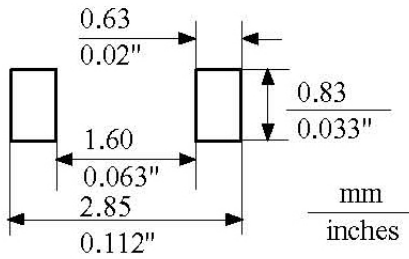


PACKAGE OUTLINE AND DIMENSIONS

1SS355FL-A



NOTE: The above package outline is similar to JEITA SC-90.



Mounting Pad Layout