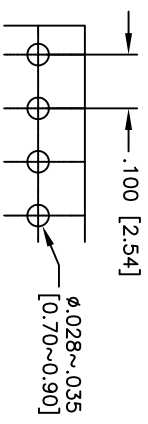
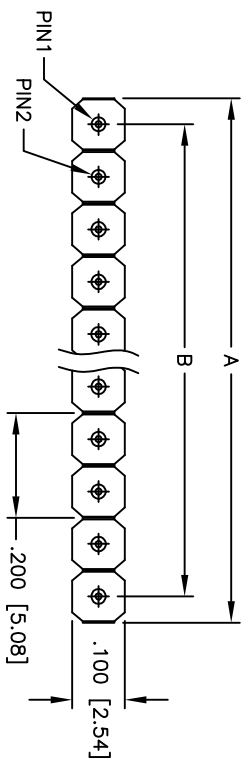
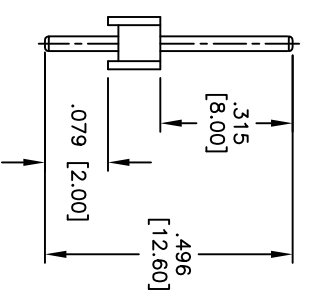
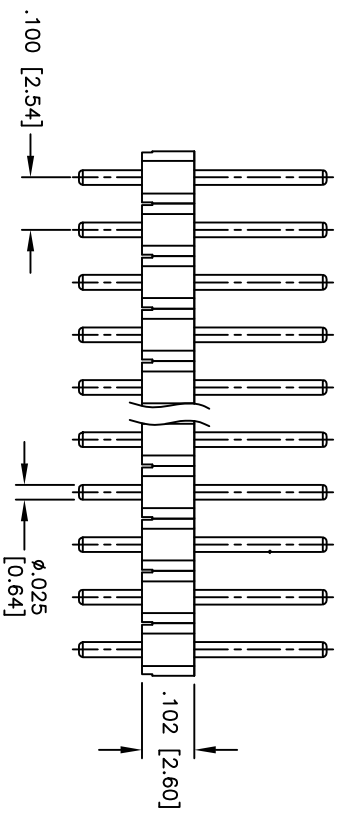


Rev	AWO #	Description	Date	Appr
-	11228	RELEASED	5/10/11	

APPROVED: _____
 DATE: _____ TITLE: _____



RECOMMENDED PCB LAYOUT



A = .100 [2.54] x No. of Positions per Row
 B = .100 [2.54] x No. of Spaces per Row

SPECIFICATIONS:

- Material: Insulator: PPS, rated UL 94V-0
- Insulator color: Black
- Contacts: Brass
- Plating: Gold flash over Nickel underplate overall
- Electrical: Operating: 60V
- Current rating: 3 Amp max
- Insulation resistance: 1,000 Mohms min @ 100 VAC
- Temperature Rating: Operating temperature: -55°C to +125°C
- Environmental: Lead free, RoHS compliant
- Recommended soldering temp: 235°C for 5 seconds



UNLESS OTHERWISE SPECIFIED
 ALL DIMENSIONS ARE INCHES [MM]
 TOLERANCES: EXCEPT AS NOTED

INCHES	± .10	ØXX	± .10
HOLES	± .020	ØXXX	± .015
	.XXX ± .015	ØXXXX	± .010

APPROVALS: _____ DATE: _____

ADAM TECH

909 Rahway Avenue, Union, NJ 07083
 Phone: 908-687-5000 Fax: 908-687-5710

TITLE: SCREW MACHINE TERMINAL STRIP, SINGLE ROW
 STRAIGHT, .100" SPACING, GOLD PLATED

DRAWN	DY	5/10/11	SIZE	PART NO.	MCT-1-XX-1-GA11228-1	REV.	-
CHECKED			SCALE:	NIS		SHEET	1 OF 1
APPROVED			REF:	S00007			