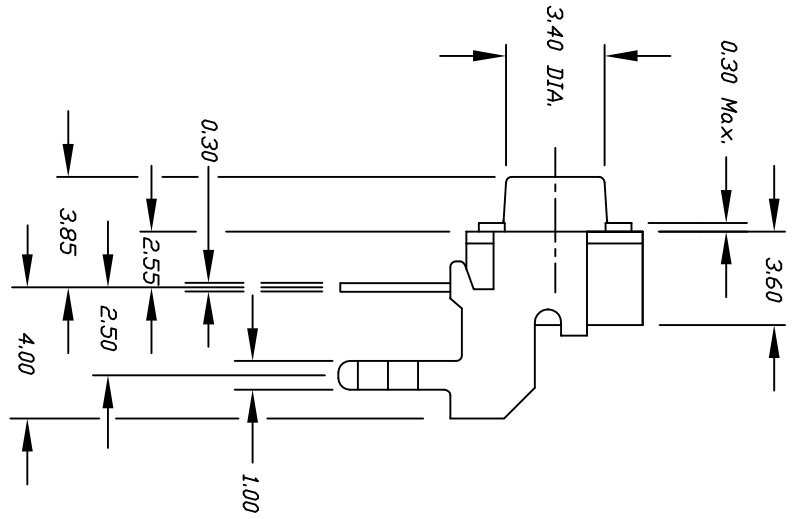


CIRCUIT: SPST
CONTACT CONFIGURATION

NOTES:

1. ALL DIMENSIONS IN MM
2. TERM. NOS. FOR REF ONLY
3. RATING: 50mA, 12V DC
4. TRAVEL: 0.25±0.1mm
5. 2002/95/EC (ROHS) COMPLIANT



REV.	PCR	DESCRIPTION	DATE	CHKD
A		RELEASED FOR PRODUCTION	8/18/98	MM
B	18677	LEG TOLERANCE WAS +/-0.1	10/9/09	BLR

TOLERANCES	
0.0	±0.4
0.00	±0.25

SCALE	DATE	DR	DWG	REV
4:1	10/9/09	BLR	P020303	B
TITLE	TL 1105V F160 Q 94-VD (STD. BRACKET)			
E-SWITCH®		ELAMBI® INDUSTRIES		

THE INFORMATION CONTAINED IN THIS DOCUMENT IS PROPRIETARY TO E-SWITCH AND IS NOT TO BE COPIED OR TRANSFERRED