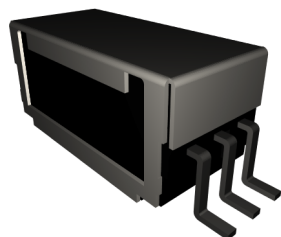


# 1E-12G

## Miniature Surface Mount



### PRODUCT DESCRIPTIONS

The 1E-12G series was specially developed as a low cost alternative to memory inspection systems. In order to effectively reduce costs, the number of leads on each ground was reduced.

With proven tracks of reliability, cost performance and manufacturing capacity, we have been providing this series to the major memory inspection system companies.

Axial, J-Lead also available

### SPECIFICATIONS

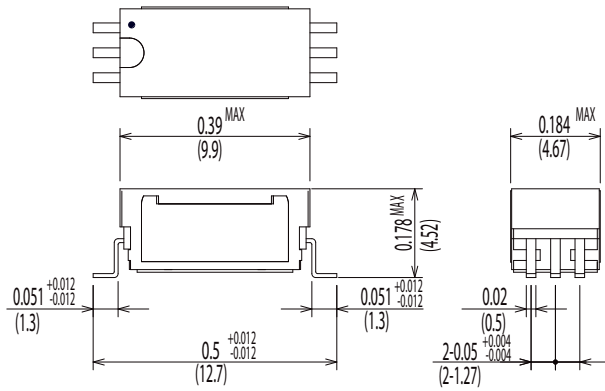


<b>1E-12G</b>		<b>1E-12G</b>	G: Gull-Wing
Parameters	Units	1 Form A	Test Conditions
<b>Coil Specifications</b>			
Nominal Coil Voltage	VDC	5.0	
Coil Resistance	$\Omega$	150	$\pm 10\%$ @ 20°C
Operate Voltage	VDC Max	3.75	15°C to 35°C
Release Voltage	VDC Min	0.7	15°C to 35°C
<b>Contact Ratings</b>			
Switching Voltage	Volts	100	Max DC/Peak AC resistance
Switching Current	Amps	0.5	Max DC/Peak AC resistance
Carry Current	Amps	1.0	Max DC/Peak AC resistance
Contact Rating	Watts	10	Max DC/Peak AC resistance
Life Expectancy	$\times 10^6$ Cycle	300	@ 1V 10mA
Contact Resistance	$m\Omega$	150	Max initial @ operate voltage
Contact Resistance Stability	$m\Omega$	5.0	Max initial @ operate voltage
<b>Relay Specifications</b>			
Insulation Resistance	$\Omega$ Min	$10^{11}$	Between all isolated pins @ 100V 20°C 40%RH
Dielectric Strength	VDC Min	200	Between contacts
	VDC Min	250	Contacts to shield
	VDC Min	250	Contacts/Shield to coil
Operate Time (Including Bounce)	msec Max	0.3	@ nominal coil voltage
Release Time	msec Max	0.05	100Hz square wave Diode suppression
<b>Environmental Ratings</b>			
Measurement Reference Conditions			
Temp: 15°C to 35°C		Storage temp: -40°C to +85°C	
Humidity: 25% to 75%RH		Operate temp: -20°C to +80°C	
Atmospheric Pressure: 860 to 1060hpa		Vibration: 20G's to 2000Hz	
		Shock: 50G's	

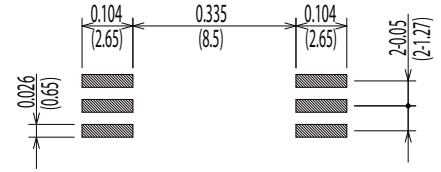
---

**Dimensions** All Dimensions are inches (mm)

**1E-12G**



**Land Pattern Recommendation**



---

**Schematic <Top View>**

