



**FEATURES:**

- AC Input 90~305 Vac Nominal
- AC Inrush current: 5 A @ 230 Vac Cold start
- Power Factor: > 0.95 @ 115 Vac / > 0.9 @ 230 Vac
- Protection: SCP / OVP / OTP
- High Operating Ambient Temp.: -20 °C ~ +60 °C
- Surge Protection: L-N 1 kV
- Safety: UL / PSE
- EMI: FCC / CE
- Comply with Indoor/Outdoor Waterproof (IP 67)
- Warranty: 5 years (refer to LinkCom warranty policy)
- RoHS Compliant

| PRODUCT SPECIFICATION |                    |                      |                   |                          |            |                   |
|-----------------------|--------------------|----------------------|-------------------|--------------------------|------------|-------------------|
| MODEL                 | DC OUTPUT POWER(W) | DC OUTPUT VOLTAGE(V) | OUTPUT CURRENT(A) | OUTPUT CURRENT TOLERANCE | EFFICIENCY | O/P NOISE(P-P, V) |
| LCCE-013U142-00       | 11.2               | 5-8                  | 1.4               | ±10%                     | 74%        | 2.8               |
| LCCE-013U112-00       | 12.6               | 9-12                 | 1.05              | ±10%                     | 80%        | 2.8               |
| LCCE-013U721-00       | 12.96              | 13-18                | 0.72              | ±10%                     | 80%        | 2.8               |
| LCCE-013U501-00       | 12                 | 19-24                | 0.5               | ±10%                     | 80%        | 2.8               |
| LCCE-013U351-00       | 12.6               | 30-36                | 0.35              | ±10%                     | 80%        | 2.8               |
| LCCE-015U112-00       | 15.75              | 11-15                | 1.05              | ±10%                     | 80%        | 2.8               |
| LCCE-015U801-00       | 14.4               | 13-18                | 0.8               | ±10%                     | 80%        | 2.8               |
| LCCE-015U501-00       | 16                 | 24-32                | 0.5               | ±10%                     | 80%        | 3.5               |
| LCCE-015U721-00       | 14.4               | 14-20                | 0.72              | ±10%                     | 80%        | 2.8               |
| LCCE-017U142-00       | 16.2               | 9-12                 | 1.35              | ±10%                     | 80%        | 2.8               |
| LCCE-017U112-00       | 18.9               | 13-18                | 1.05              | ±10%                     | 80%        | 3                 |
| LCCE-017U801-00       | 16                 | 14-20                | 0.8               | ±10%                     | 80%        | 2.8               |
| LCCE-017U701-00       | 16.8               | 19-24                | 0.7               | ±10%                     | 80%        | 2.8               |
| LCCE-017U501-00       | 18                 | 30-36                | 0.5               | ±10%                     | 80%        | 3.5               |
| LCCE-017U351-00       | 16.8               | 38-48                | 0.35              | ±10%                     | 80%        | 2.8               |
| LCCE-017U122-00       | 18                 | 11-15                | 1.2               | ±10%                     | 80%        | 3                 |

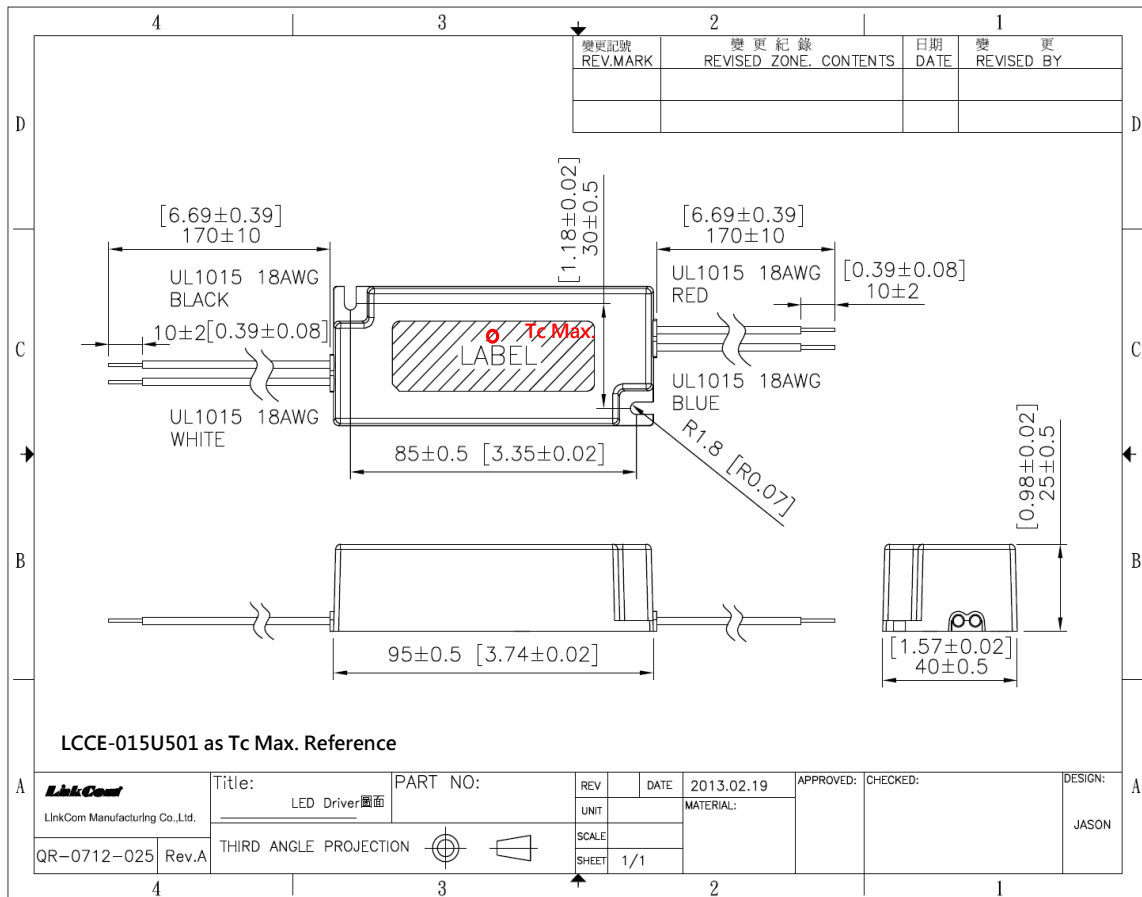
| ELECTRICAL SPECIFICATION |  |
|--------------------------|--|
| INPUT VOLTAGE RANGE      | 90-305 Vac, 127-431 Vdc, Normal: 100-277 Vac                             |
| INPUT FREQUENCY          | Range: 47-63 Hz, Normal: 50-60 Hz  |
| ACTIVE POWER FACTOR      | > 0.95 @ 115 Vac / > 0.9 @ 230 Vac at Full Load and Rated Output Voltage |
| THD                      | NA   |
| TURN ON DELAY TIME       | 3000 ms at full load 115 Vac / 230 Vac                                   |
| AC CURRENT               | 0.4 A / 110 Vac  |
| INRUSH CURRENT (typ)     | Cold Start 5 A @ 230 Vac   |
| LEAKAGE CURRENT          | < 0.7 mA / 264 Vac   |
| SHORT CIRCUIT PROTECTION | SCP will restart automatically after the fault condition is removed      |
| OVER VOLTAGE PROTECTION  | The OVP is latched shutdown mode.  |
| OVER TEMP. PROTECTION    | The power will derate on the current limit.                              |
| OVER CURRENT PROTECTION  | NA   |
| OPERATING TEMP.          | -20 °C ~ +60 °C  |
| STORAGE TEMP.            | -40 °C ~ +80 °C  |
| RELATIVE HUMIDITY        | 10% to +90%, non-cond.   |
| SAFETY                   | UL 60950-1, PSE  |
| EMI                      | FCC Part 15, EN 55015  |
| WITHSTAND VOLTAGE        | I/P-O/P: 4.242 kVdc, I/P-CASE: 4 kVdc                                    |
| ISOLATION RESISTANCE     | I/P-O/P: 100M Ω / 500 Vdc / 25°C / 70% RH                                |
| DIMENSION (L*W*H)        | 90 * 40 * 25 mm 【3.74 * 1.57 * 0.98 inch】                                |

- (1) All parameters specified at 230 Vac input unless otherwise noted.
- (2) All specifications Typical at 25°C, unless otherwise noted, at normal line and load.
- (3) Ripple and Noise measured directly at pins/terminals at nom. load, 0.1 uF bypass and 47 uF electrolytic, pk-pk at 20 MHz bandwidth.
- (4) Specified for free-air convection cooling.
- (5) Minimum load is NOT required for proper operation .
- (6) 100% Production Tested.

\* REFERENCE: [www.linkcom.com.tw](http://www.linkcom.com.tw)

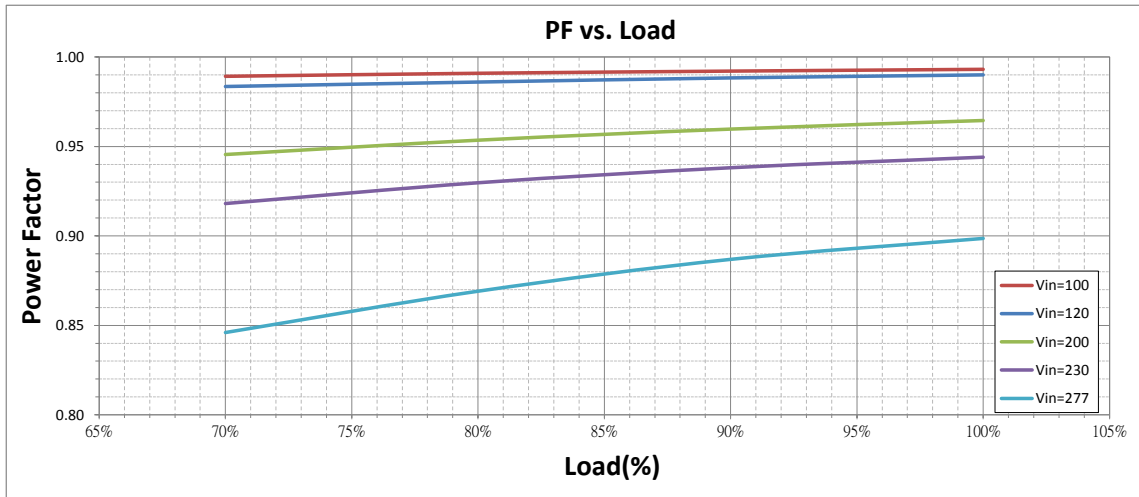
\* Please contact [sales@linkcom.com.tw](mailto:sales@linkcom.com.tw), [sales@linkcomusa.com](mailto:sales@linkcomusa.com) for more information

**DIMENSIONS**

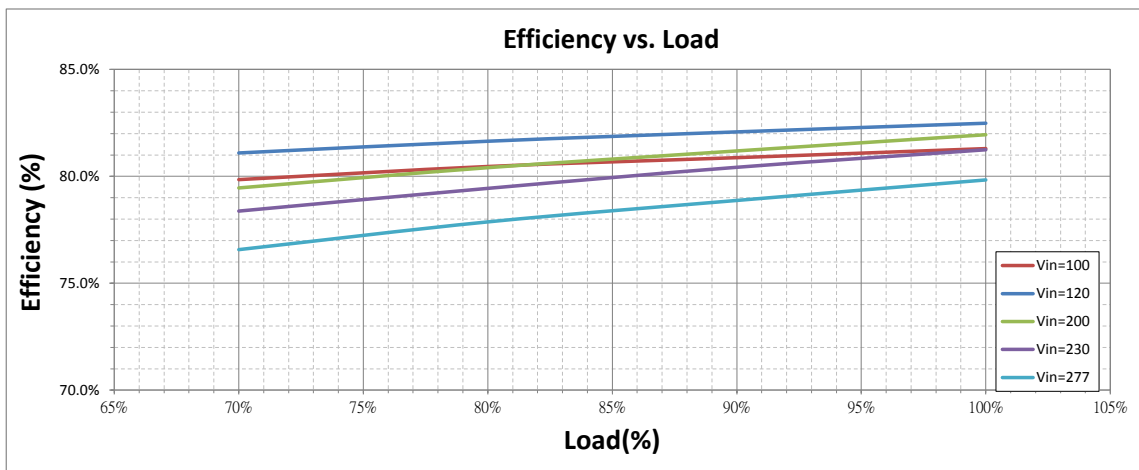


\* REFERENCE: [www.linkcom.com.tw](http://www.linkcom.com.tw)

**Power Factor vs. Load (LCCE-015U112-00)**



**Efficiency vs. Load (LCCE-015U112-00)**



**Output Current vs. Load (LCCE-015U112-00)**

