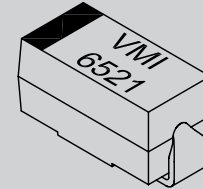


2,000 V - 5,000 V Rectifiers

0.15 A - 0.50 A Forward Current

70 ns Recovery Time

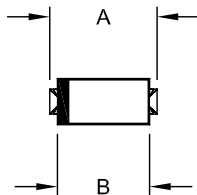
SXF6521
SXF6523
SXF6525



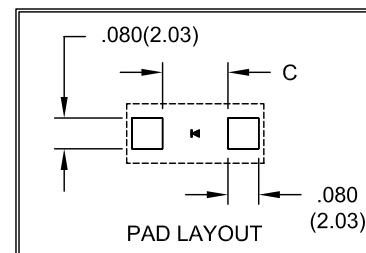
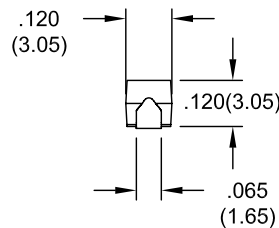
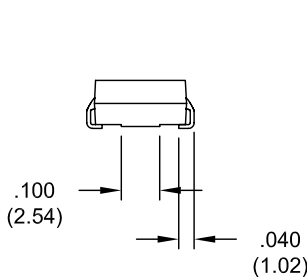
ELECTRICAL CHARACTERISTICS AND MAXIMUM RATINGS

Part Number	Working Reverse Voltage (V _{rw}) Volts	Average Rectified Current (I _o)		Reverse Current @ V _{rw} (I _r)		Forward Voltage (V _f)		1 Cycle Surge Current t _p =8.3ms (I _{fsm})	Repetitive Surge Current (I _{frm})	Reverse Recovery Time (3) (T _{rr})	Thermal Impd. θ _{J-C}	Junction Cap. @50VDC @1kHz (C _j)
		55°C(1)	100°C(2)	25°C	100°C	25°C		25°C	25°C	25°C	25°C	25°C
		Amps	Amps	μA	μA	Volts	Amps	Amps	Amps	ns	°C/W	pF
SXF6521	2000	0.500	0.250	0.5	20	3.0	0.500	25	5.00	70	7	8.0
SXF6523	3000	0.250	0.125	0.5	20	5.0	0.250	15	3.00	70	7	4.0
SXF6525	5000	0.150	0.075	0.5	20	7.0	0.150	10	2.00	70	7	3.0

(1) TC=55°C (2)TC=100°C (3)I_f=125mA, I_r=250mA, I_{rr}=63mA *Op. Temp.= -65°C to +175°C Stg. Temp.= -65°C to +200°C



Part	A	B	C
SXF6521	.240 ±.010 (6.10 ±.25)	.200 ±.005 (5.08 ±.13)	.130(3.30)
SXF6523 SXF6525	.280 ±.010 (7.11 ±.25)	.240 ±.005 (6.10 ±.13)	.170(4.32)



Dimensions: In. (mm) • All temperatures are ambient unless otherwise noted. • Data subject to change without notice.



VOLTAGE MULTIPLIERS INC.
 8711 W. Roosevelt Ave.
 Visalia, CA 93291

TEL 559-651-1402
 FAX 559-651-0740
www.voltagemultipliers.com