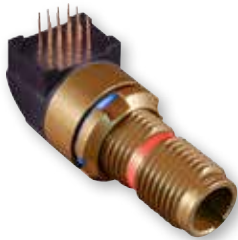




Threaded Coupling

881-020R Rear Panel Mount, Right Angle PCB Receptacle



Series 881 rear panel mount, threaded coupling, right angle receptacles are sealed with epoxy and meet IP67 requirements in mated condition. For open face sealing in an unmated condition request modification code -518. Three contact sizes are available with current ratings of 5A, 3A and 1A. Aluminum or stainless steel housings and thermoplastic insulators. High performance crimp contacts are factory terminated to solid copper wire. SuperFly® connectors are ideal for soldier systems and other applications where reduced size and weight are critical.

| Shell Size and Insert Arrangements | | | |
|------------------------------------|-----------------|-----------|----------|
| Insert Arrangements | No. of Contacts | | |
| | #23 5A. | Micro 3A. | Nano 1A. |
| B7N | — | — | 7 |
| C10N | — | — | 10 |
| C2M2N | — | 2 | 2 |
| D3M | — | 3 | — |
| D2W2N | 2 | — | 2 |
| E3W | 3 | — | — |
| E4M | — | 4 | — |
| E19N | — | — | 19 |
| E4M4N | — | 4 | 4 |
| F4W | 4 | — | — |
| F7M | — | 7 | — |
| F22N | — | — | 22 |
| F4M8N | — | 4 | 8 |
| F4W4N | 4 | — | 4 |
| G7W | 7 | — | — |
| G10M | — | 10 | — |
| G31N | — | — | 31 |
| G6M10N | — | 6 | 10 |
| G6M12N | — | 6 | 12 |
| H10W | 10 | — | — |
| H37N | — | — | 37 |
| H6W14N | 6 | — | 14 |
| J44N | — | — | 44 |
| J7W19N | 7 | — | 19 |
| K19M | — | 19 | — |
| K13M19N | — | 13 | 19 |
| L22M | — | 22 | — |

First letter of insert arrangement represents connector shell size, as in this example K13M19N

NOTES

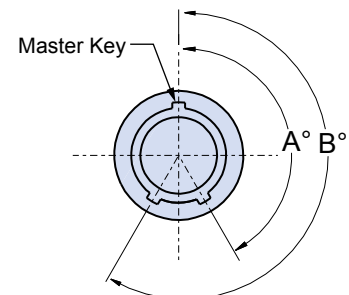
1. See Section A for insert arrangement layouts
2. See Section A for additional finish options

| How To Order | | | | | | |
|---|--|----------|-------------|-----------|----------|--------------|
| Sample Part Number | 881-020R | A | -B7N | -M | S | -.125 |
| Series | 881-020R | | | | | |
| Insert Style | A = Unshrouded Contacts B = Shrouded Contacts are recessed within the insulator | | | | | |
| Shell Size / Insert Arr.¹ | See Shell Size and Insert Arrangement Table | | | | | |
| Material/ Finish² | M = Aluminum/electroless nickel RoHS compliant ZR = Aluminum/zinc-nickel, non-reflective with RoHS compliant black chromate MT = Aluminum/nickel-PTFE RoHS compliant ZMT = Stainless steel/nickel-PTFE RoHS compliant | | | | | |
| PCB Tail Finish | S = Solder-dipped in IAW Sn63Pb37 G = Gold plated | | | | | |
| Wire Type | .080, .125, .175 | | | | | |

MOD-686 POLARIZING OPTIONS

Standard SuperFly® connectors have a single master key. Versions with three keys are also available if alternate key positions are required. Add suffix code 686 to the part number per the following example: 881-020RA-B7N-MS-.125-**686A**

| Plug Alternate Key Positions | | |
|------------------------------|------|------|
| Suffix Code | A° | B° |
| 686A | 150° | 210° |
| 686B | 75° | 210° |
| 686C | 95° | 230° |
| 686D | 140° | 275° |
| 686E | 75° | 275° |
| 686F | 95° | 210° |



MOD-518 OPEN FACE SEALING

For IP67 performance in open face (unmated) condition, use suffix -518.

Example:

881-020RA-B7N-MS-.125-**518**



Threaded Coupling

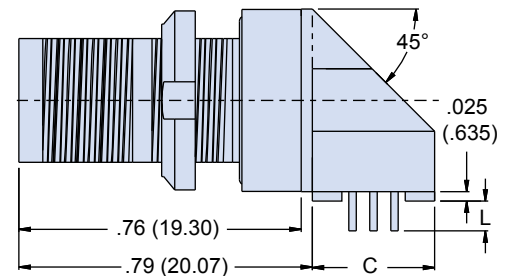
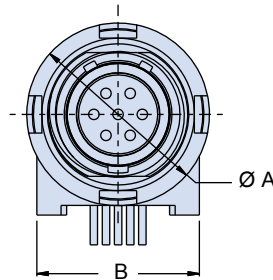
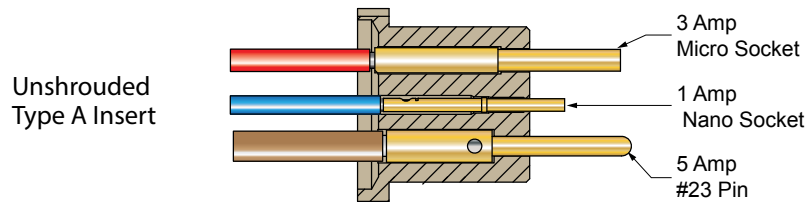
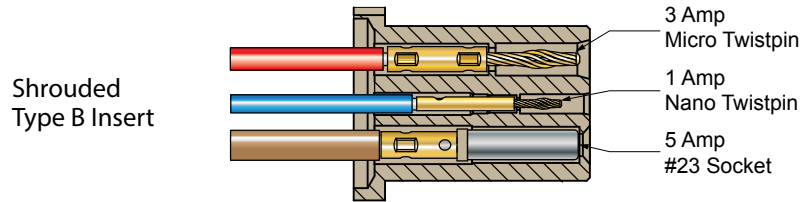


881-020R Rear Panel Mount, Right Angle PCB Receptacle

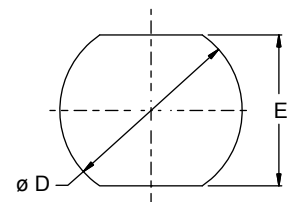
ABOUT SHROUDED AND UNSHROUDED SUPERFLY® CONFIGURATIONS

Shrouded contacts are recessed within the insert. Unshrouded contacts extend from the insert face. Shrouded inserts contain 1 amp and 3 amp Twistpin contacts along with 5 amp socket contacts. Unshrouded inserts contain 1 amp and 3 amp sockets and 5 amp pin.

| Wire Code Table | | | | |
|--|---------|-----------|----------|------|
| Layouts with 5A. Contacts | | | | |
| Insert Arrangement | #23 5A. | Micro 3A. | Nano 1A. | Code |
| E3W, F4W, G7W, H10W | #22 | — | — | 100 |
| | #24 | — | — | 200 |
| | #26 | — | — | 300 |
| Layouts with 5A. and 1A. Contacts | | | | |
| Insert Arrangement | #23 5A. | Micro 3A. | Nano 1A. | Code |
| D2W2N, F4W4N, H6W14N, J7W19N | #22 | — | #28 | 104 |
| | #24 | — | #28 | 204 |
| | #26 | — | #28 | 304 |
| | #22 | — | #30 | 105 |
| | #24 | — | #30 | 205 |
| | #26 | — | #30 | 305 |
| | #22 | — | #32 | 106 |
| | #24 | — | #32 | 206 |
| #26 | — | #32 | 306 | |
| Layouts with 3A. Contacts | | | | |
| Insert Arrangement | #23 5A. | Micro 3A. | Nano 1A. | Code |
| D3M, E4M F7M, G10M, K19M, L22M | — | #24 | — | 020 |
| | — | #26 | — | 030 |
| | — | #28 | — | 040 |
| | — | #30 | — | 050 |
| Layouts with 3A. and 1A. Contacts | | | | |
| Insert Arrangement | #23 5A. | Micro 3A. | Nano 1A. | Code |
| C2M2N, E4M4N, F4M8N, G6M10N, G6M12N, K13M19N | — | #24 | #28 | 024 |
| | — | #26 | #28 | 034 |
| | — | #28 | #28 | 044 |
| | — | #24 | #30 | 025 |
| | — | #26 | #30 | 035 |
| | — | #28 | #30 | 045 |
| | — | #26 | #32 | 036 |
| — | #28 | #32 | 046 | |
| Layouts with 1A. Contacts | | | | |
| Insert Arrangement | #23 5A. | Micro 3A. | Nano 1A. | Code |
| B7N, C10N, E19N, F22N, G31N, H37N, J44N | — | — | #28 | 004 |
| | — | — | #30 | 005 |
| | — | — | #32 | 006 |



| Shell Size | A | | B | | C | | D Mnt Ø | | E Flats | |
|------------|------|-------|------|-------|------|-------|---------|-------|---------|-------|
| | In. | mm. | In. | mm. | In. | mm. | In. | mm. | In. | mm. |
| B | .392 | 9.96 | .338 | 8.59 | .260 | 6.60 | .283 | 7.19 | .241 | 6.12 |
| C | .412 | 10.46 | .358 | 9.09 | .280 | 7.11 | .305 | 7.75 | .261 | 6.63 |
| D | .431 | 10.95 | .377 | 9.58 | .300 | 7.62 | .324 | 8.23 | .281 | 7.14 |
| E | .451 | 11.46 | .397 | 10.08 | .320 | 8.13 | .344 | 8.74 | .300 | 7.62 |
| F | .471 | 11.96 | .417 | 10.59 | .340 | 8.64 | .364 | 9.25 | .320 | 8.13 |
| G | .490 | 12.45 | .436 | 11.07 | .380 | 9.65 | .383 | 9.73 | .340 | 8.64 |
| H | .530 | 13.46 | .476 | 12.09 | .400 | 10.16 | .419 | 10.64 | .379 | 9.63 |
| J | .569 | 14.45 | .515 | 13.08 | .440 | 11.18 | .459 | 11.66 | .418 | 10.62 |
| K | .589 | 14.96 | .534 | 13.56 | .460 | 11.68 | .478 | 12.14 | .438 | 11.13 |
| L | .628 | 15.95 | .574 | 14.58 | .500 | 12.70 | .518 | 13.16 | .478 | 12.14 |



RECOMMENDED CUTOUT PANEL