



CSS0316P Series SMD WIRE WOUND POWER INDUCTORS (SHIELDED)

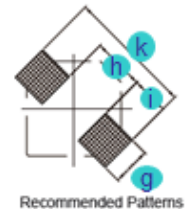
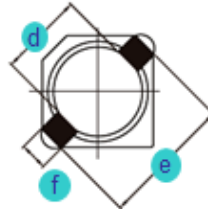
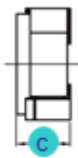
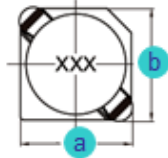
Rev. A

A. Electrical Specifications:

P/N	Marking	Inductance (μH)	Test Freq. (KHz)	DCR Max. (mΩ)	Rated Current (mA)
CSS0316P-1R5N	1R5	1.5	100	52	1550
CSS0316P-2R2N	2R2	2.2	100	72	1200
CSS0316P-3R3N	3R3	3.3	100	85	1100
CSS0316P-4R7N	4R7	4.7	100	105	900
CSS0316P-6R8N	6R8	6.8	100	170	730
CSS0316P-100N	100	10.0	100	210	550
CSS0316P-150N	150	15.0	100	295	450
CSS0316P-220N	220	22.0	100	430	400
CSS0316P-330N	330	33.0	100	675	320

B. Dimensions: mm (Inch)

Series	a	b	c	d	e	f	g	h	i	k
CSS0316P	3.8 (0.150)	3.8 (0.150)	1.80 (0.071)	Ø2.1 (0.083)	4.4 (0.173)	1.1 (0.043)	1.5 (0.059)	2.4 (0.094)	1.4 (0.055)	5.2 (0.205)
Tol.	±0.2 (0.008)	±0.2 (0.008)	Max.	±0.1 (0.004)	±0.2 (0.008)	±0.2 (0.008)	Typ.	Typ.	Typ.	Typ.



C. General Information:

1. CSS0316P-xxx_, "CSS0316P" = P/N, "xxx" = Inductance, "_" = Tolerance.
2. Tolerance "_": N: ± 30%, M: ± 20%, L: ± 15%.
3. Operating temperature range: -30°C to +100°C (Including self-heating).
4. Storage temperature: -40°C to +85°C.
5. Inductance measured using the HP4284A and Chroma1320 & 3302.
6. DCR measured using Chroma 16502 milliohm meter.
7. Inductance drop no more than 35% of initial value at Isat, temperature rise Δt < 40°C at rated current.
8. Inductance and Current range: From 1.5 μH (1550mA) to 33.0 μH (320mA).
9. MSL: Level 1.

D. Applications:

1. Game Consoles
2. Set Top Boxes
3. Cables Modems
4. Computers
5. Mobile Communication Devices (Cell Phones, Radios, etc.)
6. PDA, LCD, DVD, BRP, HD.



CSS0316P Series SMD WIRE WOUND POWER INDUCTORS (SHIELDED)

Rev. A

E. Characteristics Curve:

