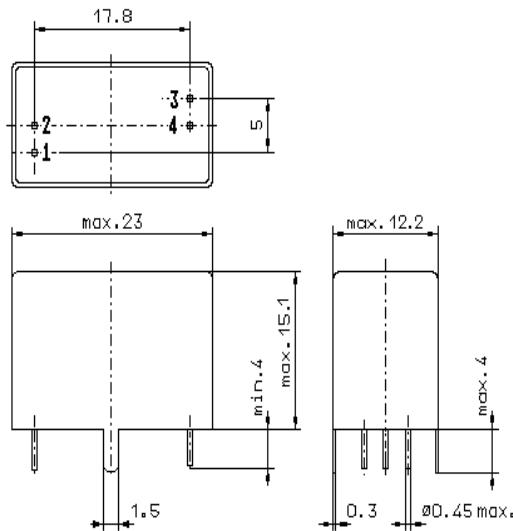


Specification for monolithic crystal filter:

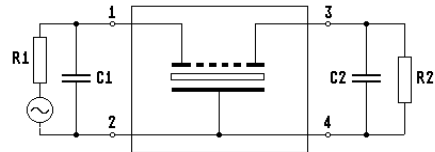
MQF 9.0-0500/04

1. General

1.1. Package:



GV6.2



- | | |
|-----------------------------------|-----------------|
| 1.2. Type name: | MQF 9.0-0500/04 |
| 1.3. Number of poles: | 8 |
| 1.4. Operating temperature range: | -20°C to +70°C |
| 1.5. Storage temperature range: | -35°C to +85°C |

2. Electric values

- | | |
|---|--|
| 2.1. Nominal centre frequency f_0 : | 9.0 MHz |
| 2.2. Pass band | |
| 2.2.1. Bandwidth between 6 dB - frequencies: | $\geq f_0 \pm 2.5$ kHz |
| 2.2.2. Ripple: | ≤ 2.0 dB at $f_0 \pm 1.5$ kHz |
| 2.2.3. Insertion loss:
(measured on smallest attenuation in pass band) | ≤ 4.0 dB |
| 2.3. Stop band | |
| 2.3.1. $f_0 \pm 5.1$ kHz | ≥ 60 dB |
| 2.3.2. $f_0 \pm 6.5$ kHz | ≥ 80 dB |
| 2.3.3. Alternate attenuation | ≥ 90 dB |
| 2.3.4. Shape factor 60:6 | < 1.8 |
| Shape factor 80:6 | < 2.2 |
| 2.4. Terminating impedance (input and output): | 500 Ω // 30 pF |
| 3. Marking: | manufacturer, date code
MQF 9.0-0500/04 |
| 4. Environment conditions: | Corresponding to Vectron standard CF001 |

Edited by: _____ date: _____ name: _____