

P/N	FIGURE(S)
-1CCSF	1
-2CCSF	2
-3CCSF	3
-4CCSF	4

REVISIONS				
DATE	REV	DESCRIPTION	DATE	BY
-	A	ECO 21451	07.21.08	DKN

(SEE OUTLINE CONFIGURATION ON NEXT PAGES)

1. CONNECTOR SHALL HAVE IT'S PHASE ADJUSTMENT SET TO 260°±20° (2.515 OVERALL LENGTH) AND LOCKED PRIOR TO PACKING FOR SHIPMENT.

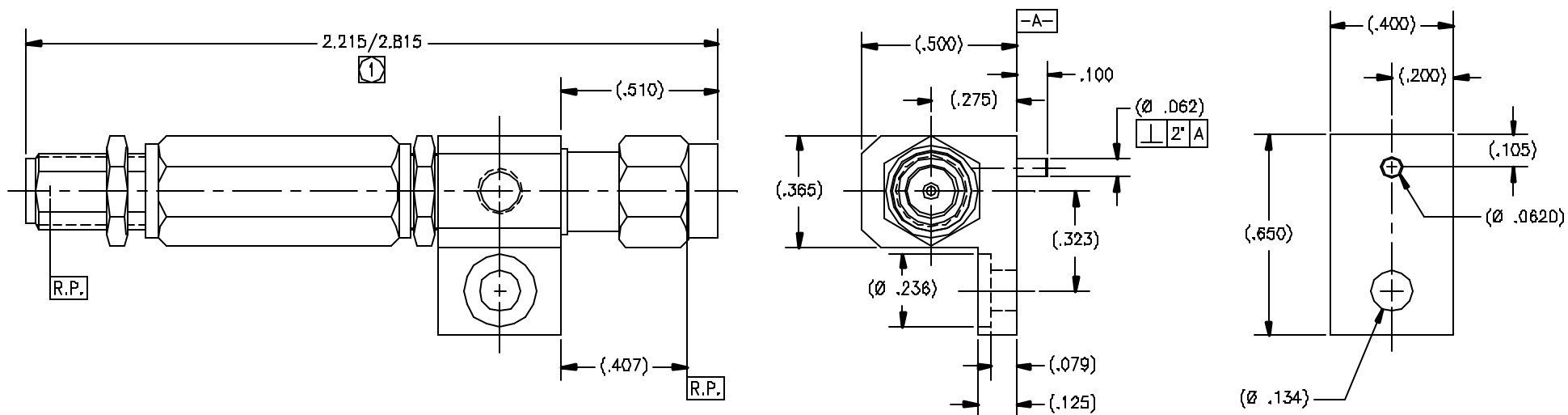
MATERIAL(S): Body(M), Bracket, Locknut & Coupling Nut: 303sst per ASTM A-582. Body(Fe): BeCu alloy per ASTM B-196. Retaining Ring & Center Conductor: BeCu alloy per ASTM B-196. Dielectric: PTFE per ASTM D-1710. Gasket: Silicone per A-A-59588. Screw: Alloy Steel Dowel Pin: 416 Stainless Steel Epoxy: Loctite	ELECTRICAL(S): Impedance: 50 Ohms nominal. Frequency Range: DC to 26 GHz. VSWR: 1.30:1 Max to 26 GHz. Insertion Loss: .07 $\sqrt{f(\text{GHz})}$ dB max R.F. Leakage: -80dB max	MECHANICAL(S): Mating Characteristics: Interface per Mil-Std-348. Phase Shift: 260° min.	ENVIRONMENTAL(S): Temperature Range: -65°C to +165°C. Thermal Shock: Mil-Std-202, Method 107, Test Cond. B. Moisture Resistance: Mil-Std-202, Method 106, Insulation resistance at least 200 MegOhms within 5 minutes after removal from humidity. Corrosion: Mil-Std-202, Method 101, Test Cond. B.
--	---	--	--

FINISH(ES): Body(M), Bracket, Locknut & Coupling Nut: Passivate per ASTM A-967. Body(Fe) & Center Conductor: Gold plate per ASTM B-488, over nickel underplate per AMS-QQ-N-290.

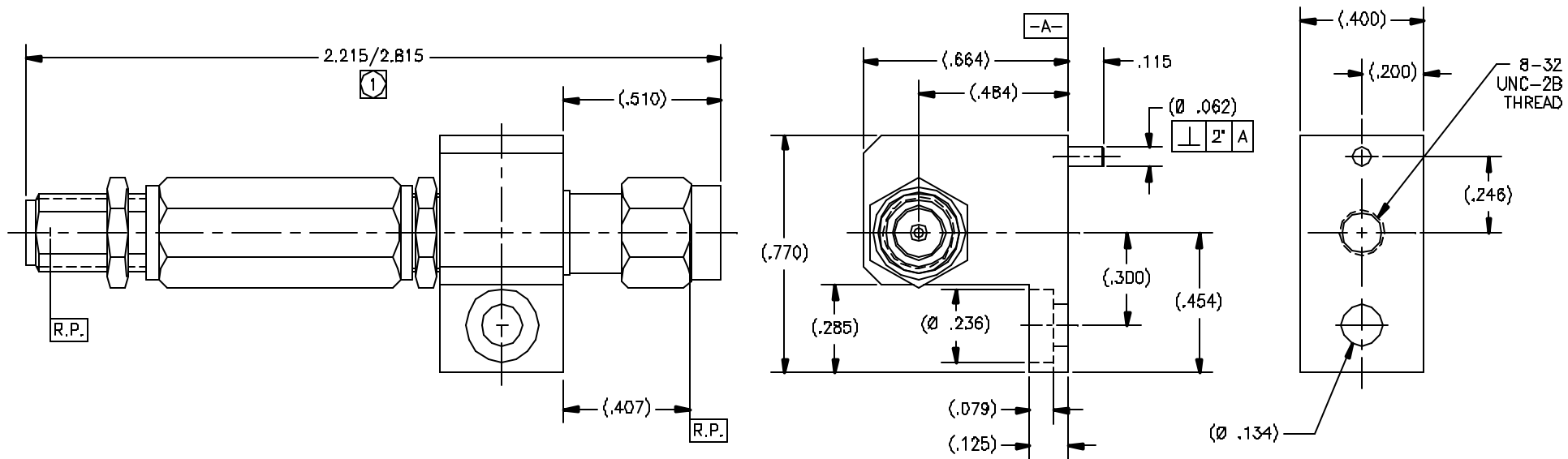
APPLICABLE TENSOLITE DOCUMENTS		
WORK STD	PROD INST	ASSY INST
NA	NA	NA
NOTICE		
<p>THIS DRAWING IS THE PROPERTY OF TENSOLITE. IT IS TO BE USED ONLY FOR THE PROJECT AND QUANTITY SPECIFIED IN THE ORDER. IT IS NOT TO BE REPRODUCED OR TRANSMITTED IN ANY FORM OR BY ANY MEANS, ELECTRONIC OR MECHANICAL, INCLUDING PHOTOCOPYING, RECORDING, OR BY ANY INFORMATION STORAGE AND RETRIEVAL SYSTEM. ANY UNAUTHORIZED REPRODUCTION OR TRANSMISSION OF THIS DRAWING IS STRICTLY PROHIBITED AND WILL BE PROSECUTED TO THE FULL EXTENT OF THE LAW.</p>		

TOLERANCES AND NOTES EXCEPT AS NOTED	
UNLESS OTHERWISE SPECIFIED	1. UNLESS OTHERWISE SPECIFIED
LINEAR DIMENSIONS: FRACTIONS ± 1/32"	2. BREAK ALL SHARP EDGES .005 MAX.
DECIMAL DIMENSIONS: ± .005"	3. UNLESS OTHERWISE SPECIFIED
ANGLES: ± 1/2°	4. UNLESS OTHERWISE SPECIFIED
1. UNLESS OTHERWISE SPECIFIED	5. UNLESS OTHERWISE SPECIFIED
2. BREAK ALL SHARP EDGES .005 MAX.	6. UNLESS OTHERWISE SPECIFIED
3. UNLESS OTHERWISE SPECIFIED	7. UNLESS OTHERWISE SPECIFIED
4. UNLESS OTHERWISE SPECIFIED	8. UNLESS OTHERWISE SPECIFIED
5. UNLESS OTHERWISE SPECIFIED	9. UNLESS OTHERWISE SPECIFIED
6. UNLESS OTHERWISE SPECIFIED	10. UNLESS OTHERWISE SPECIFIED
7. UNLESS OTHERWISE SPECIFIED	11. UNLESS OTHERWISE SPECIFIED
8. UNLESS OTHERWISE SPECIFIED	12. UNLESS OTHERWISE SPECIFIED

SEE NOTE(S)		-	SEE NOTE(S)	-
APPROVAL INITIALS	DATE	Tensolite		HIGH PERFORMANCE CABLES & INTERCONNECT SYSTEMS Long Beach, California 90815
DRAWN BY	ACD	04.23.03	TITLE PHASE ADJUSTER ADAPTER SMA FEMALE TO SMA MALE W/ MOUNTING BRACKET	
CHECKED BY			SCALE 4/1	DATE-REVISED/VERSION 01
TEST ENG			SHEET 1	OF 3
QUALITY			REV	A
DESIGN ENG	HT	06.22.08	ECO NO.	5996
MFG ENG			DRAWING NO.	
			30990	

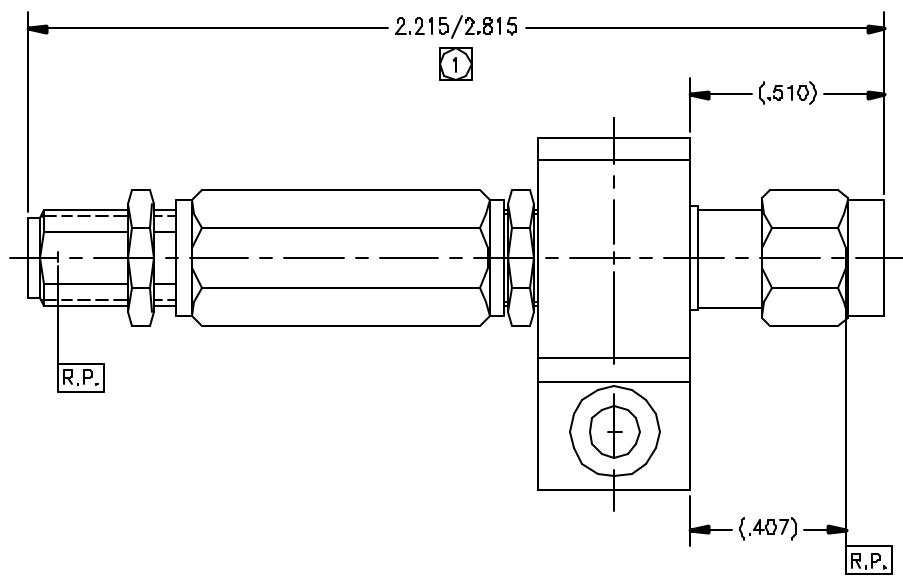


(FIGURE 1)

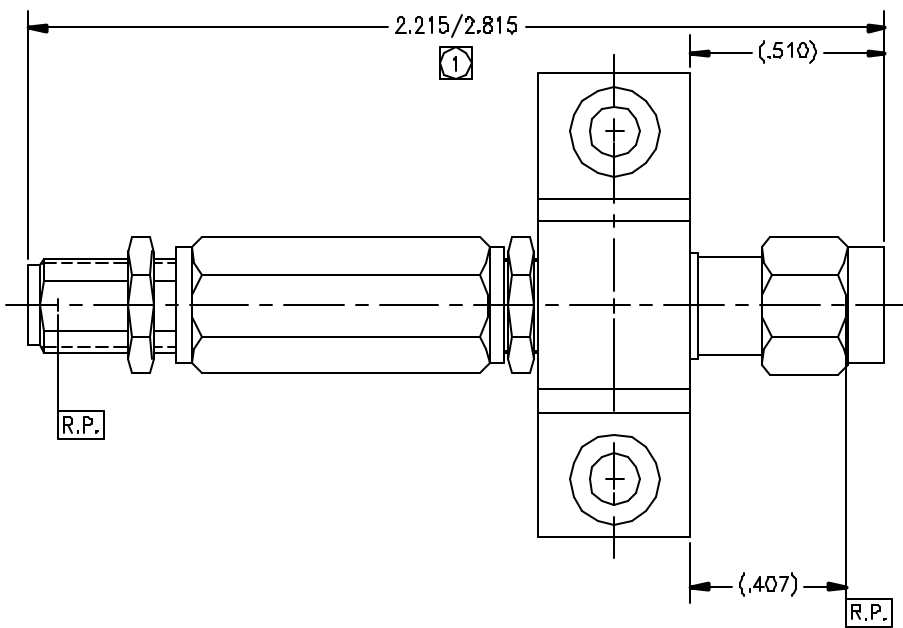
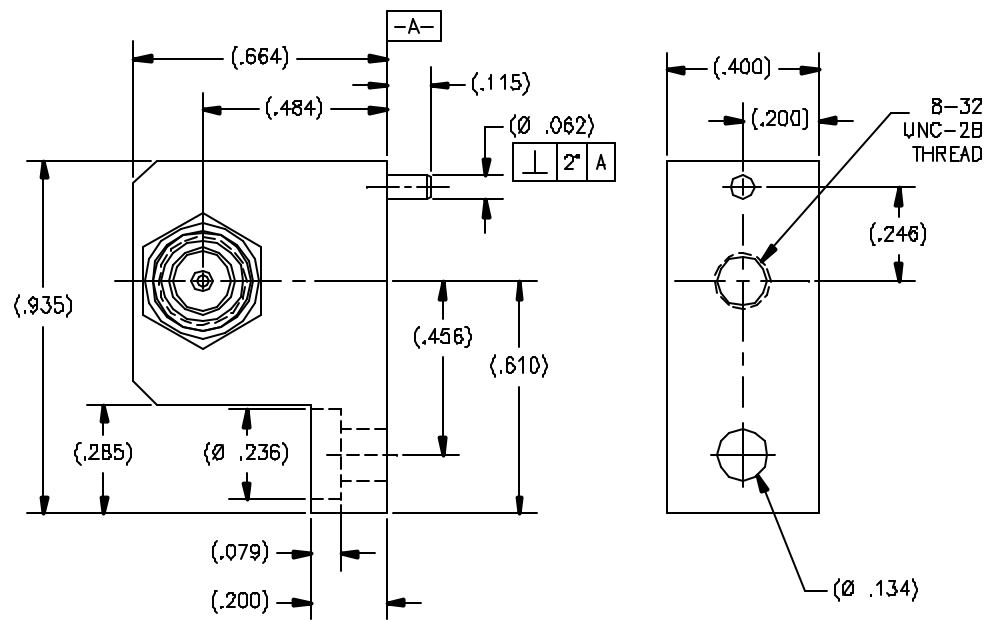


(FIGURE 2)

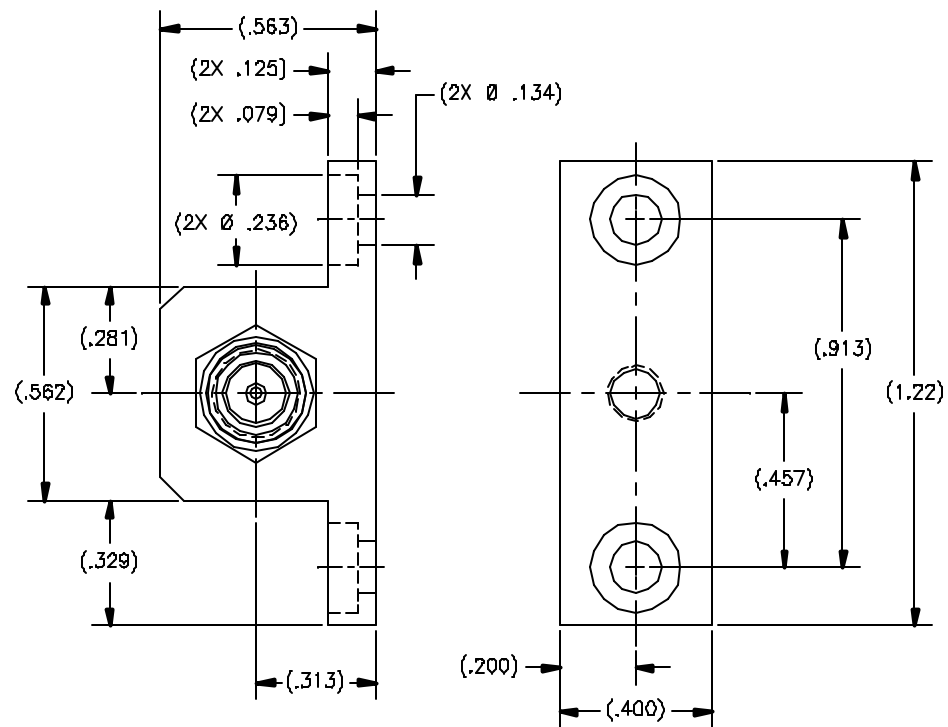
SCALE 4/1	SUB-ORDINATE/ALTERNATE CL	SHEET 2 of 3
SIZE C	DRAWING NO. 30990	REV. A
5996		



(FIGURE 3)



(FIGURE 4)



SCALE	SUB-ORDINATE PLANS	SHEET	OF
4/1	DL	3	3
SIZE	DATE CODE	DRAWING NO.	REV.
C	30990	5996	A