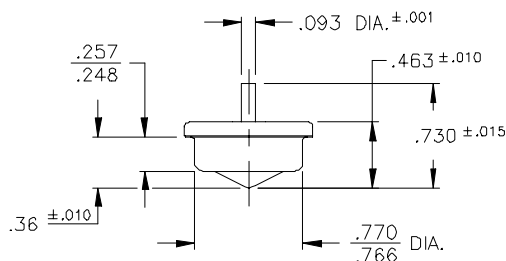
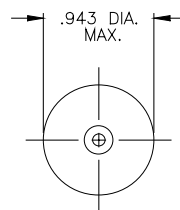


# Part No: T03-1002 T03 Series Tip Over Switch – Mercury



- Features:**
- \* Un-Insulated
  - \* Omni-directional
  - \* Form: NC/SPST/Mounted as shown
  - \* Angles Referenced from vertical
  - \* Single Electrode
  - \* Hermetically Sealed
  - \* Small Package Size
  - \* High Current Capability
  - \* Low Contact Resistance
  - \* Long Life



Shown in normally closed position.  
Tip over switches "break" when the electrode is tilted from the vertical and "make" when returned to the vertical.

Drawing dimensions in inches.

Typical Break Angle * :	25° to 40° in any direction
Minimum Remake Angle * :	10°
	* from vertical 0° reference
<b>Switch Ratings:</b>	
Max Switching Voltage:	120V
Max Switching Current:	12.5A, 1500W/120V resistive, 1/6hp 120V
Initial Contact Resistance (Max):	25 milli Ohms
Stand Off Voltage (contact to contact):	1240 VAC
Operating Temperature:	-38° to 220° F / -38° to 105° C
Storage Temperature:	-40° to 356° F / -40° to 180° C
Typical number of operations at specified load:	3,000,000
G-Force Activation G-Level/Range:	N/A
<b>Dimensions:</b>	
Weight per 100pcs. Lbs / Kgs:	3.20 / 1.45
Body Length (less leads). Inches / Millimeters:	0.463 / 11.76
Maximum Diameter. Inches / Millimeters:	0.943 / 23.95
<b>Materials:</b>	
Lead Wire Type:	N/A
Lead wire length/skive/termination:	N/A
Finish:	Nickel



© American Electronic Components Inc 2006

**American Electronic Components Inc.,**  
1101 Lafayette Street, Elkhart, Indiana. USA  
Tel: +1-574-295-6330 Fax: +1-574-293-8013  
Email: [sales@aecensors.com](mailto:sales@aecensors.com)  
<http://www.aecensors.com>