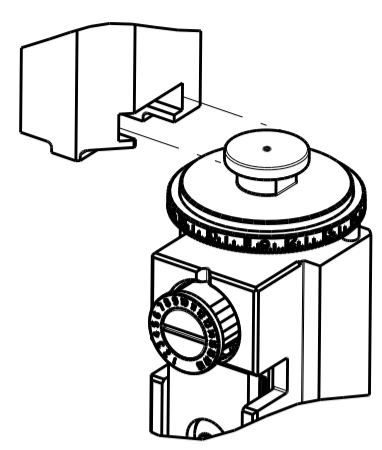


APPLICATOR STYLE CONVERSION CHART. Table with columns: PART NUMBER, REVISION, DESCRIPTION, FEED TYPE, CONVERT TO, PART NUMBERS REQUIRED. Rows include: FINE CRIMP HEIGHT ADJUST MECHANICAL, PNEUMATIC, SERVO LATCH PLATE, SMART APPLICATOR, MECHANICAL FEED, SERVO LATCH PLATE, SMART APPLICATOR, PNEUMATIC FEED.



APPLICATOR DATA table with columns: CRIMP SIZE, TYPE. Rows: WIRE 1.63 mm [.064] F, INSUL 2.29 mm [.090] OV. Includes applicator instructions 408-10389.

TERMINAL DATA: KOSTAL TERMINAL KOSTAL CRIMP SPECIFICATION. Includes wire strip length, insulation diameter range, terminal application specification, and terminals applied.

TERMINAL DATA: KOSTAL TERMINAL KOSTAL CRIMP SPECIFICATION. Includes wire strip length, insulation diameter range, terminal application specification, and terminals applied.

WIRE SIZE, CRIMP HEIGHT mm [INCH], CRIMP HEIGHT REFERENCE SETTING. Rows for 0.50mm2, 0.35mm2, 0.22mm2.

WIRE SIZE, CRIMP HEIGHT mm [INCH], CRIMP HEIGHT REFERENCE SETTING. Rows for 22 AWG, 24 AWG.

- RECOMMENDED SPARE PARTS
GREASE BEARING SURFACES LIGHTLY
LUBRICATE DAILY PER THE APPLICATOR INSTRUCTION SHEET SUPPLIED WITH THE APPLICATOR.
APPLICATOR SPECIFIC DATA TO BE ENTERED INTO BLANK MEMORY CHIP AT ASSEMBLY...
ADJUSTMENT OF THE STRIPPER MAY BE REQUIRED WHEN MOVING THE APPLICATOR BETWEEN BENCH AND LEADMAKER APPLICATIONS.
APPLY PART NUMBER 1-23419-5 LOCTITE TO THREADS OF ITEM 62, 180.
GREASE THREADS, GROOVE AND O-RING ON ITEMS 35 & 252.
MAGNET, ITEM 166 MUST BE ORIENTED CORRECTLY IN ORDER TO PROPERLY ACTUATE THE COUNTER.
CRIMP HEIGHT REFERENCE SETTING WAS THE SETTING USED WHEN THE APPLICATOR WAS QUALIFIED AT THE FACTORY...
SPARE FEED CAM STORAGE LOCATION REFER TO INSTRUCTION SHEET FOR ADDITIONAL INFORMATION.
TO CONVERT THE APPLICATOR TO A NON-CARRIER CUTTING STYLE, REMOVE ITEM 13 AND ATTACH TO THE LOCATION ON THE BACK SIDE OF THE HOUSING...
WHEN ASSEMBLING A NON CRIMP HEIGHT ADJUST APPLICATOR (-6) USE SHIMS FROM ITEM 260 TO ACHIEVE A NOMINAL SHIM HEIGHT OF 4.80.

*WARNING ON INSTALLATION, SET WIRE DISC, ITEM 40 TO LARGEST WIRE SIZE SETTING. USE OF SETTINGS BELOW MINIMUM REQUIRED CRIMP HEIGHT SETTING WILL CAUSE DAMAGE TO CRIMP TOOLING.

Table with columns: PART NO, DESCRIPTION, ITEM NO. Rows: 2119957-2 APPLICATOR SHIM PACK, 8-21084-0 O-RING, .676 ID, .070 DIA. MAT., 2119640-1 PUSH ROD, AIR FEED, 2079988-1 BUSHING, LCH5-12, MISUMI, 2119641-1 FEED CAM, AIR FEED, 2119798-1 DETENT PIN, 1-22279-3 SPRING, COMPRESSION.

ATLANTIC VERSION Shown on sheets 1 of 4 & 2 of 4 (Pacific version shown on sheets 3 of 4 & 4 of 4)

SET UP GAUGE 2119599-1. REVISIONS table with columns: P, LTH, DESCRIPTION, DATE, DWN, APVD. Rows: A, RELEASED, 28JAN2015, KH, TE.

Large table of part numbers and descriptions. Rows include: RAM, AMP STYLE, SIDE FEED, NON-ADJ., CAM, SNAIL, INSULATION ADJUSTMENT, WASHER, WAVE SPRING, CREST-TO-CREST, RETAINER, INSULATION DIAL, SCR, SKT HD CAP M3 X 4.0, SHCS, LOW HEAD, RoHS, M5 X 16, MECHANICAL FEED ASSEMBLY, AIR FEED MODULE, SCR, BHSC, RoHS (M3 X 6), TAG, IDENTIFICATION, SPACER, FEEDER, STANDOFF, HOLD-DOWN, LOCATER BLOCK, TERMINAL, PIN, SLOTTED SPRING 3.0 X 14.0, SPRING, COMPRESSION, GUIDE PIN, HOLDDOWN, GUIDE PIN, HOLDDOWN, RING, RETAIN, EXTERN, 3/16 CRESCENT, MAGNET, RARE EARTH HIGH ENERGY, COUNTER, MAGNETIC, SPRING, FEED FINGER, PIN, RETAIN, GRVD, 3/16 X .854, HOLDER, FEED FINGER, AF, MEMORY CHIP, PROGRAMMED, SERVO FEED LATCH ASM, FEED FINGER ASSEMBLY, SF, SPACER, CRIMPER, DOCUMENTATION PACKAGE, TAG, IDENTIFICATION, SCREW, DRIVE, RH, RoHS, 2 x .188, LIMITER, ADJUSTMENT BOLT, SCR, SET, SOC, CONE POINT, M3 x 4.0, SCR, BHSC, RoHS (M4 X 8), SCR, HEX HD CAP, M4 X 6.0, PAWL, FEED, SHCS, LOW HEAD, RoHS, M4 X 12, NUT, HEX, REG, RoHS, M3.5, HOLDDOWN, TERMINAL, SCR, SKT HD CAP M4 X 6.0, FEED CAM, PRE FEED, FEED CAM, POST FEED, APPLICATOR BASIC ASSEMBLY, SF, RAM, AMP STYLE, SIDE FEED, SCR, BHSC, RoHS (M8 X 25), DISC, NUMBERED FA WIRE ADJUSTMENT, APPLICATOR SHIM PACK, RAM WASHER, PRECISION, FA HEAD, ATLANTIC STYLE, BOLT, ADJUSTMENT, SUPPORT, TERMINAL, SCR, BHSC, RoHS (M4 X 20), HEX HEAD, FLANGED, M5 x 8mm LONG, SPACER, STRIP GUIDE, ASSEMBLY, STRIP GUIDE, SPACER, CRIMPER, DRAG, TERMINAL, STRIP GUIDE, SCR, SKT HD CAP, RoHS, M4 X 8.0, WASHER, FLAT, REG M4, STRIPPER, SIDE FEED, INSERT, SHEAR, SPRING, COMPRESSION, STOP, SHEAR, SHEAR HOLDER, FRONT, FLOATING SHEAR, FRONT, ANVIL, COMBINATION, DEPRESSOR, SHEAR, BLOCK, CRIMPER SPACER, CRIMPER, INSULATION OVERLAP PREMIUM, SPACER, CRIMPER, CRIMPER, WIRE.

Technical drawing information including dimensions, tolerances, material, weight, and scale. Includes drawing number 00779, scale 1:2, and sheet 1 of 4.

LOC		DIST		REVISIONS			
A	66	P	LTM	DESCRIPTION	DATE	DWN	APVD
		-		SEE SHEET 1			

FEED TYPE MECHANICAL



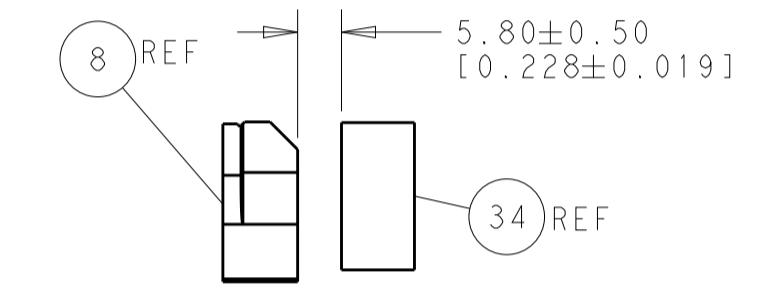
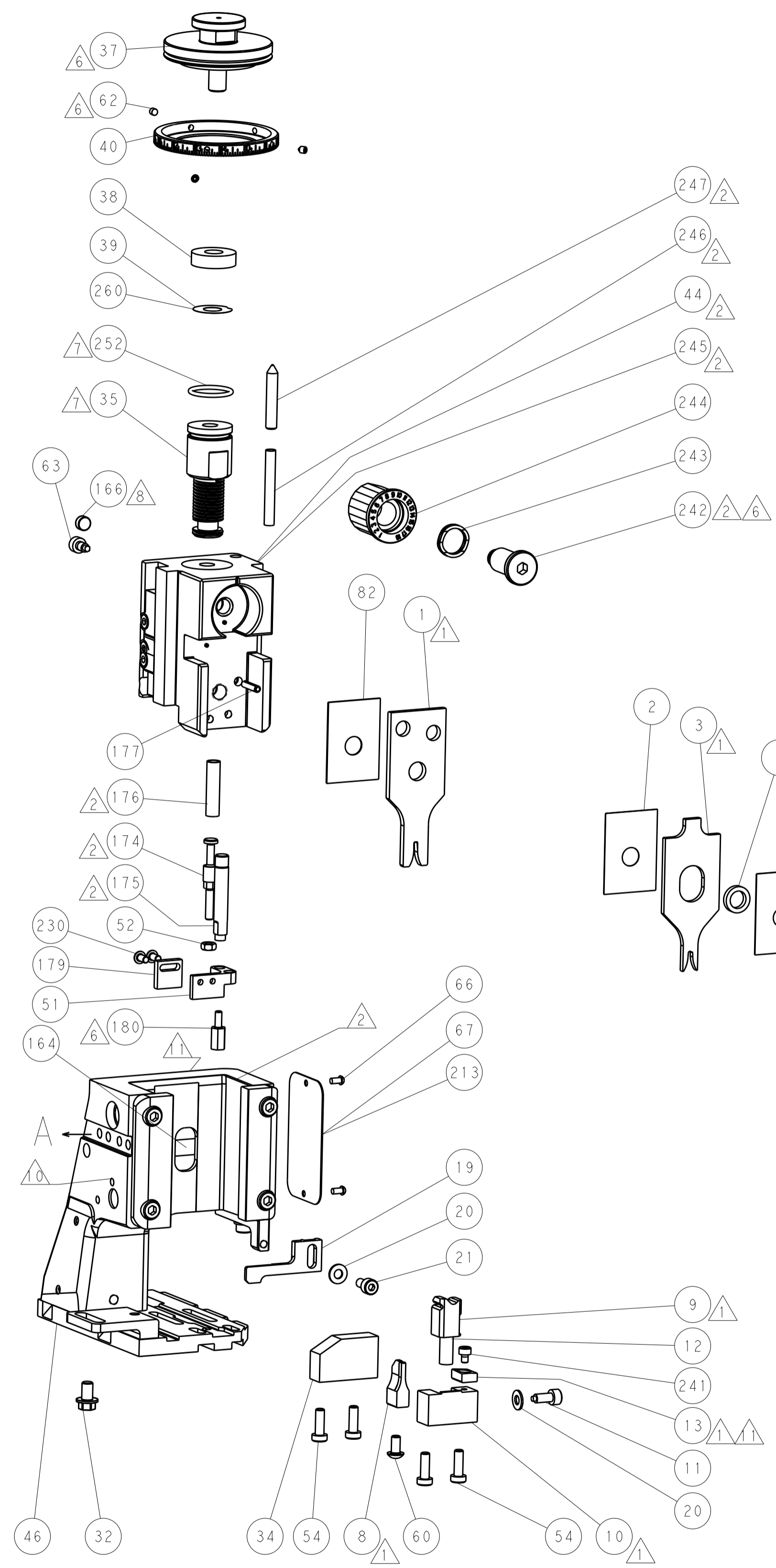
PNEUMATIC



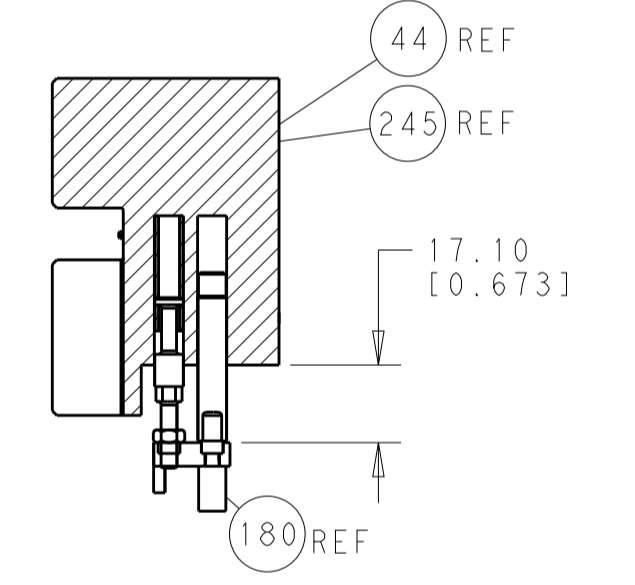
SERVO LATCH PLATE



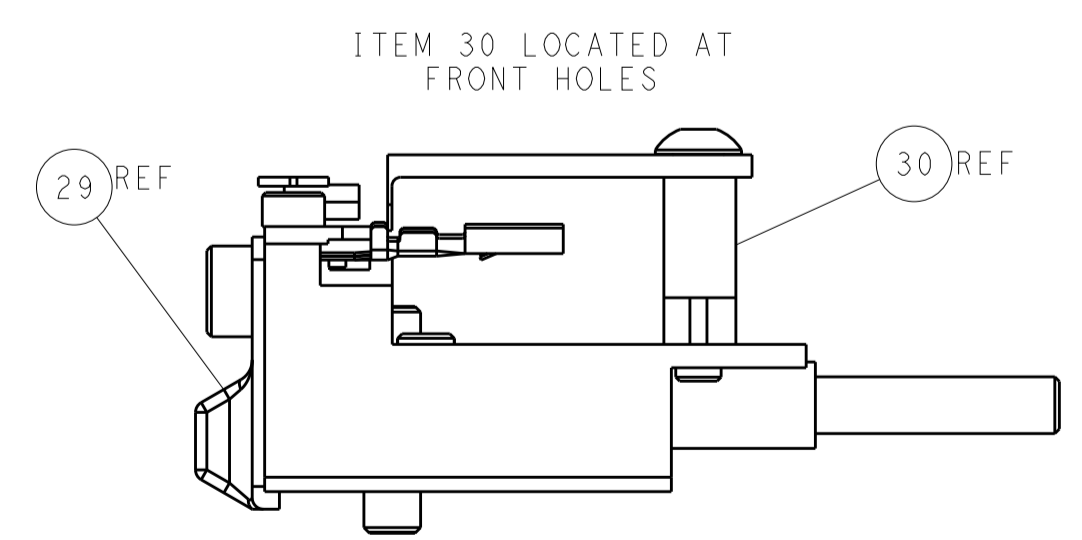
CAM POSITIONS



TERMINAL SUPPORT LOCATION



HOLDDOWN SET-UP



FEED TRACK POSITION GUIDE BY INSULATION BARREL

ATLANTIC VERSION
 Shown on sheets 1 of 4 & 2 of 4
 (Pacific version shown on sheets 3 of 4 & 4 of 4)

DIMENSIONS:		TOLERANCES UNLESS OTHERWISE SPECIFIED:		DWN: H. HUANG 11DEC2014		TE Connectivity	
mm	0 PLC ±0.5	1 PLC ±0.5	2 PLC ±0.13	3 PLC ±0.013	4 PLC ±0.001	CHK: L. ZHANG 11DEC2014	Harrisburg, PA 17105-3608
MATERIAL:		FINISH:		APVD: H. GUO 11DEC2014		NAME: Ocean Side Feed Applicator	
				WEIGHT:		SIZE: CAGE CODE: DRAWING NO: A1 00779 ©=2266611	
				Customer Accessible Production Drawing		SCALE: 1:2 SHEET 2 of 4 REV A	

LOC		DIST		REVISIONS			
A	66	P	LTM	DESCRIPTION	DATE	OWN	APVD
		-		SEE SHEET 1			

FEED TYPE MECHANICAL



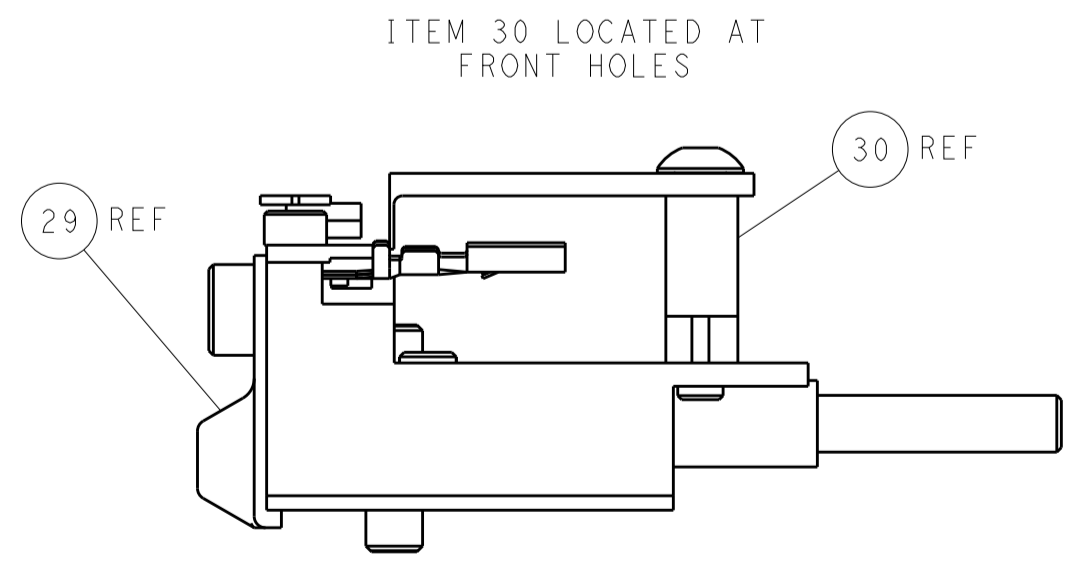
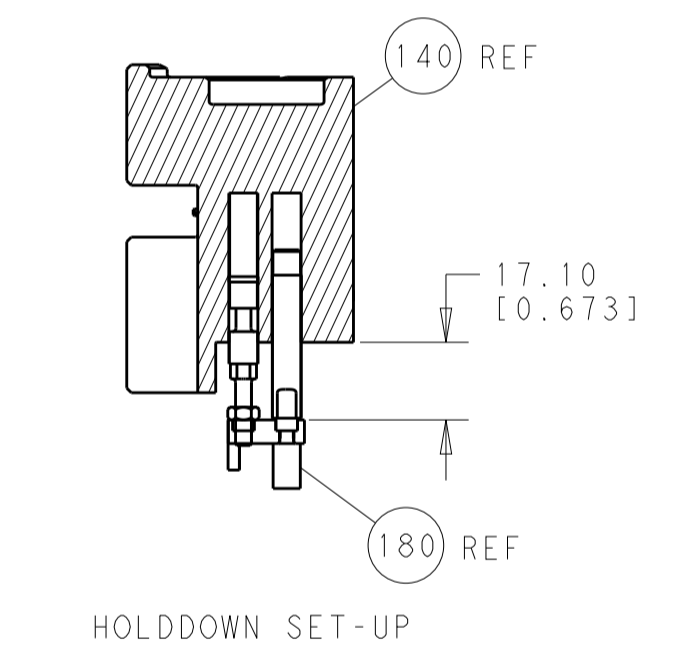
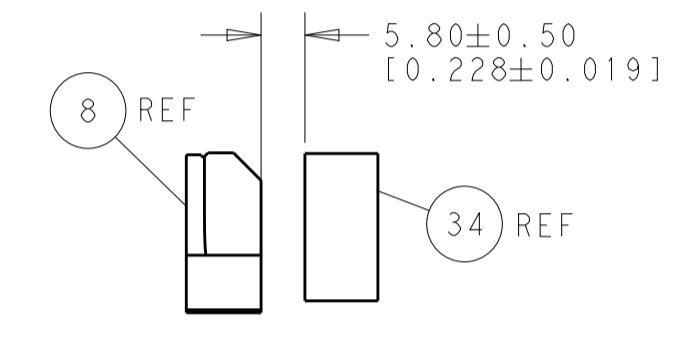
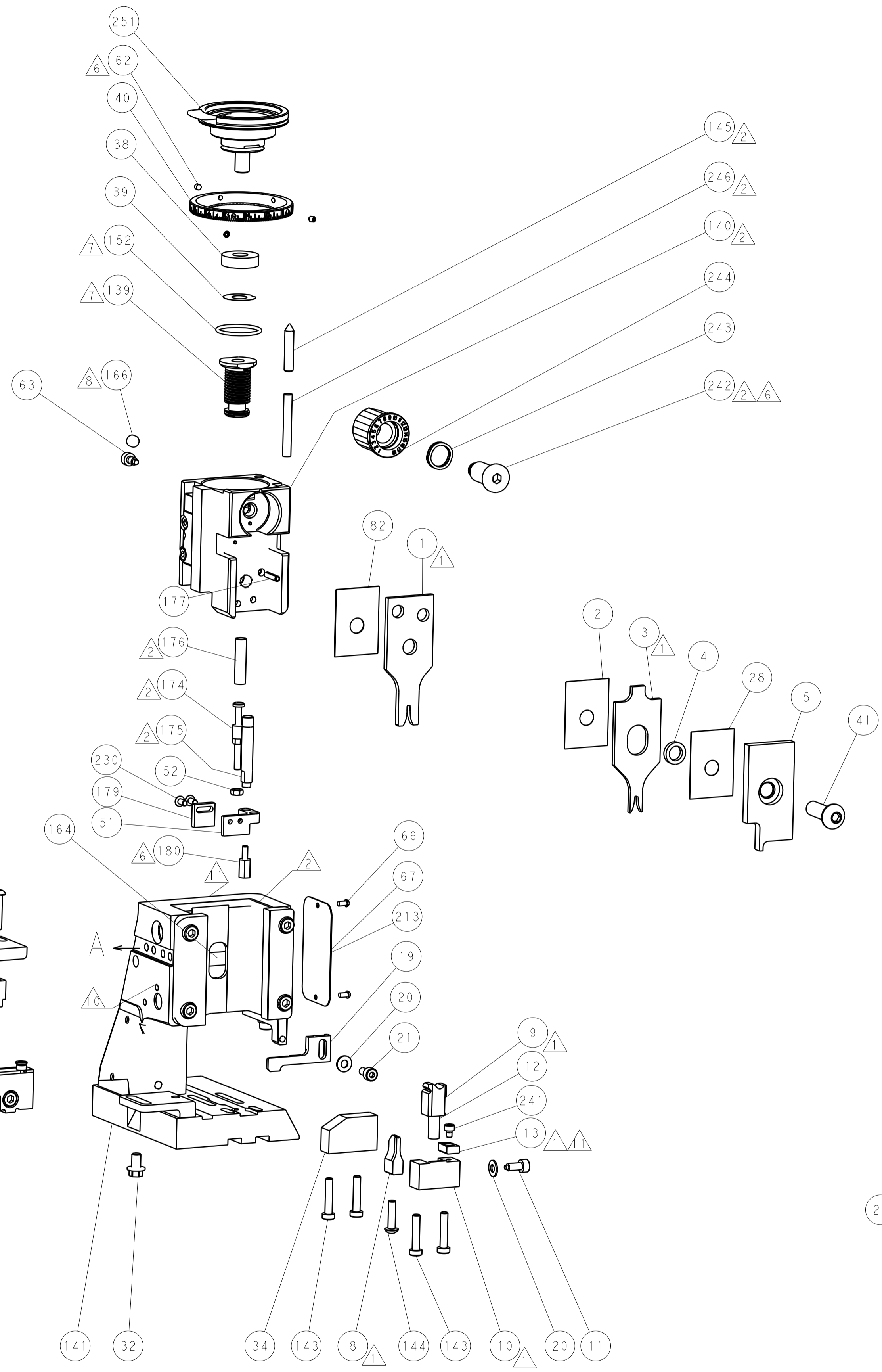
PNEUMATIC



SERVO LATCH PLATE



CAM POSITIONS



PACIFIC VERSION
 Shown on sheets 3 of 4 & 4 of 4
 (Atlantic version shown on sheets 1 of 4 & 2 of 4)

DIMENSIONS:		TOLERANCES UNLESS OTHERWISE SPECIFIED:		DWN: H. HUANG 11DEC2014		STE TE Connectivity	
mm	0 PLC ±0.5	1 PLC ±0.5	2 PLC ±0.13	3 PLC ±0.013	4 PLC ±0.001	ANGLES ±0.001	FINISH
MATERIAL:				APVD: L. ZHANG 11DEC2014		NAME: Ocean Side Feed Applicator	
MATERIAL:				APVD: H. GUO 11DEC2014		PRODUCT SPEC:	
MATERIAL:				APVD:		APPLICATION SPEC:	
MATERIAL:				APVD:		WEIGHT:	
MATERIAL:				APVD:		SCALE: 1:2	
MATERIAL:				APVD:		SHEET 4 OF 4	
MATERIAL:				APVD:		REV A	